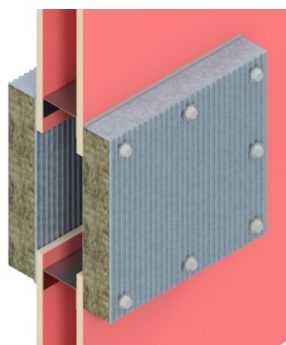
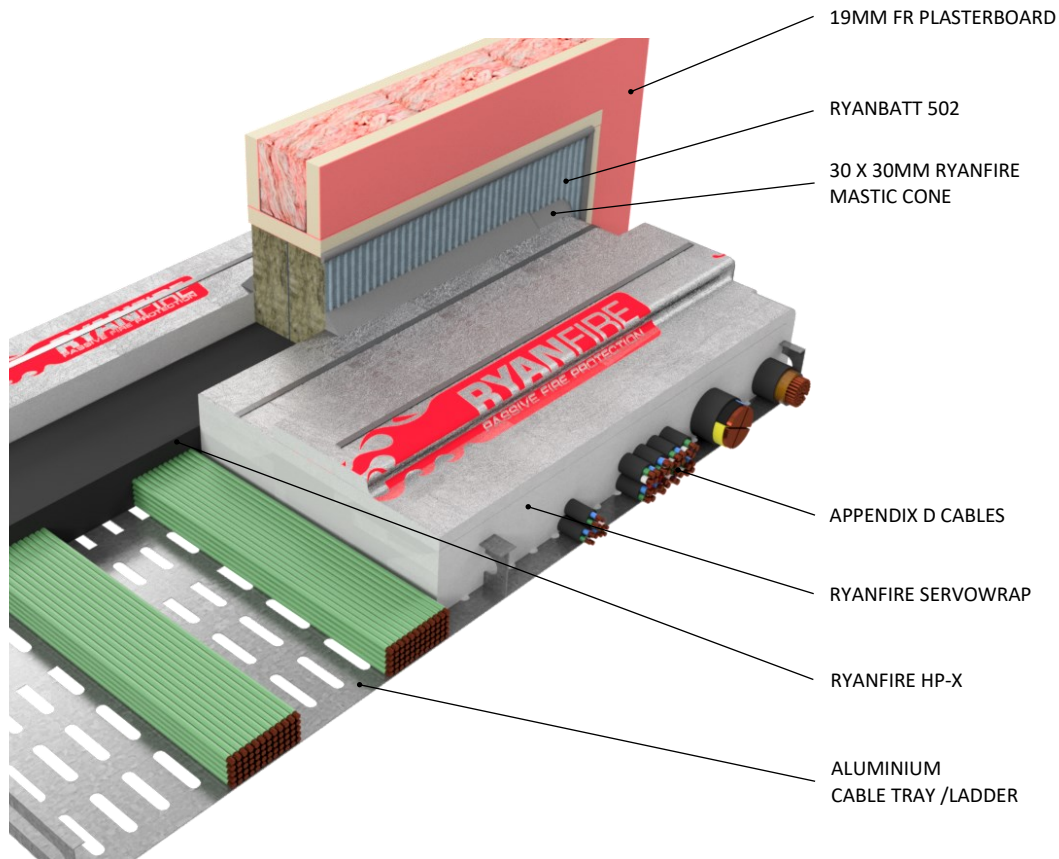


## INSTALLATION INSTRUCTIONS

1. ENSURE THE APERTURE IS CLEAN AND FREE OF DUST AND DEBRIS.
2. CUT THE RYANBATT 502 TO THE REQUIRED SIZE TO FIT TIGHTLY INTO THE FULLY LINED APERTURE, AND AROUND THE CABLE PENETRATION.
3. CUT THE RYANBATT ACROSS THE SHORTEST DIMENSION, THROUGH THE MIDPOINT OF THE PENETRATION, TO ALLOW IT TO BE FIXED INTO PLACE.
4. APPLY RYANFIRE BRUSH GRADE MASTIC TO ALL THE INTERNAL EDGES OF THE APERTURE AND TO ALL THE CUT AND EXPOSED EDGES OF THE RYANBATT.
5. INSERT THE FIRST LAYER OF RYANBATT INTO THE OPENING TO SIT FLUSH WITH THE SURFACE OF THE WALL.
6. APPLY RYANFIRE MASTIC TO THE FACE OF THE BOARD AND INSTALL THE SECOND LAYER OF 502 ONTO THE FIRST LAYER. STAGGER ANY JOINTS BETWEEN THE LAYERS BY MINIMUM 200MM.
7. APPLY RYANFIRE HP-X INTO THE GAPS BETWEEN THE CABLES, AND INTO THE GAP BETWEEN THE TOP OF THE CABLE TRAY AND THE 502 BOARD, TO THE FULL DEPTH OF THE BOARD (100MM).
8. APPLY A 5MM BEAD OF RYANFIRE MASTIC TO THE PERIMETER OF THE RYANBATT AND TO ANY JOINTS AND GAPS.
9. WRAP 1 LAYER OF 300MM WIDE RYANFIRE SERVOWRAP AROUND THE CABLE TRAY WITH A MIN 100MM OVERLAP AT THE END OF THE LOOP. PRESS THE SERVOWRAP UP AGAINST THE SURFACE OF THE RYANBATT 502. WRAP AN ADDITIONAL LAYER OF SERVOWRAP, WITH A 100MM OVERLAP OVER THE FIRST LAYER, SO THAT THE SERVOWRAP EXTENDS 500MM FROM THE SURFACE OF THE 502 BOARD.
10. PACK OUT ANY GAPS ALONG THE TOP OF THE CABLE TRAY WITH ADDITIONAL LAYERS OF SERVOWRAP.
11. SECURE THE SERVOWRAP AROUND THE CABLE TRAY USING STEEL CABLE TIES 50MM FROM EACH END AND 1 NOMINALLY IN THE CENTRE.
12. APPLY A 30 X 30MM CONE OF RYANFIRE MASTIC TO THE JOINT BETWEEN THE SERVOWRAP AND THE RYANBATT.
13. REPEAT STEPS 9 - 12 ON BOTH SIDES OF THE WALL.
14. SEAL ANY EXPOSED EDGES OF THE SERVOWRAP WITH FOIL TAPE.



THIS SYSTEM MAY BE INSTALLED USING A PATENT FIT CONFIGURATION.  
PLEASE CONTACT RYANFIRE TECHNICAL SUPPORT  
FOR MORE INFORMATION.

<b>Products:</b>	RYANBATT 502 RYANFIRE MASTIC RYANFIRE HP-X RYANFIRE SERVOWRAP
<b>Approval:</b>	AS 1530.4:2014/AS 4072.1:2005
<b>BK:</b>	315
<b>Ref:</b>	25SFR00007
<b>ID:</b>	A, B
<b>Scenario:</b>	Penetration seal to AS1530.4 Appendix D cable bundles on a 900mm Aluminium cable tray / ladder
<b>Services:</b>	D1 cable configuration D2 cable configuration
<b>Construction:</b>	102mm FR plasterboard / Masonry wall
<b>Fire Integrity:</b>	120 minutes
<b>Fire Insulation:</b>	120 minutes

**NOTE : THE CABLE TRAY MUST BE SUPPORTED ON BOTH SIDES OF THE WALL, NO MORE THAN 100MM & 500MM AWAY FROM THE WALL.**

Web based drawings are for example only. Fire performance of any system is dependant on, but not limited to, size of opening, substrate, if penetrations are passing through, type, size and number. Please refer to Ryanfire technical department for detailed and specific fire performance information.



RYANFIRE Technical Support:  
info@ryanfire.co.nz - Tel 09 443 0362

Drawing Title  
**Ryanbatt 502, HP-X & Servowrap to  
900mm aluminium cable tray / ladder  
102mm plasterboard wall**

Scale	NTS	Date	July 2025
Drawing Number	V27.20	Rev	1.0

**All errors and omissions excepted.** The information contained within this drawing is believed to be correct on the date of publication, and is based upon tested and certified solutions. The policy of **Ryanfire Products** is one of constant improvement. Installers must ensure that they are following the latest published drawings, test evidence and instructions. Whilst **Ryanfire Products** will endeavour to keep its publications up to date, the accuracy of the information contained within this drawing may be affected by pertinent changes in the law or regulatory requirements and alterations or amendments to the specification of the **manufactured** products. Terms and conditions of sale apply.

Ryanfire Products owns and has copyright to these drawings. They are to be used only for the purpose for which they were intended and supplied and are not to be sold, transferred or made available for use by a third party. Any misuse of these drawings will result in legal proceedings.