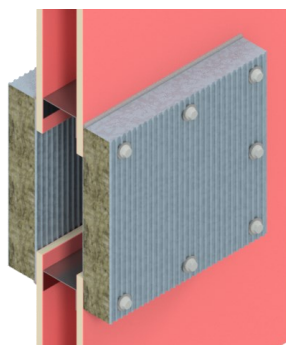
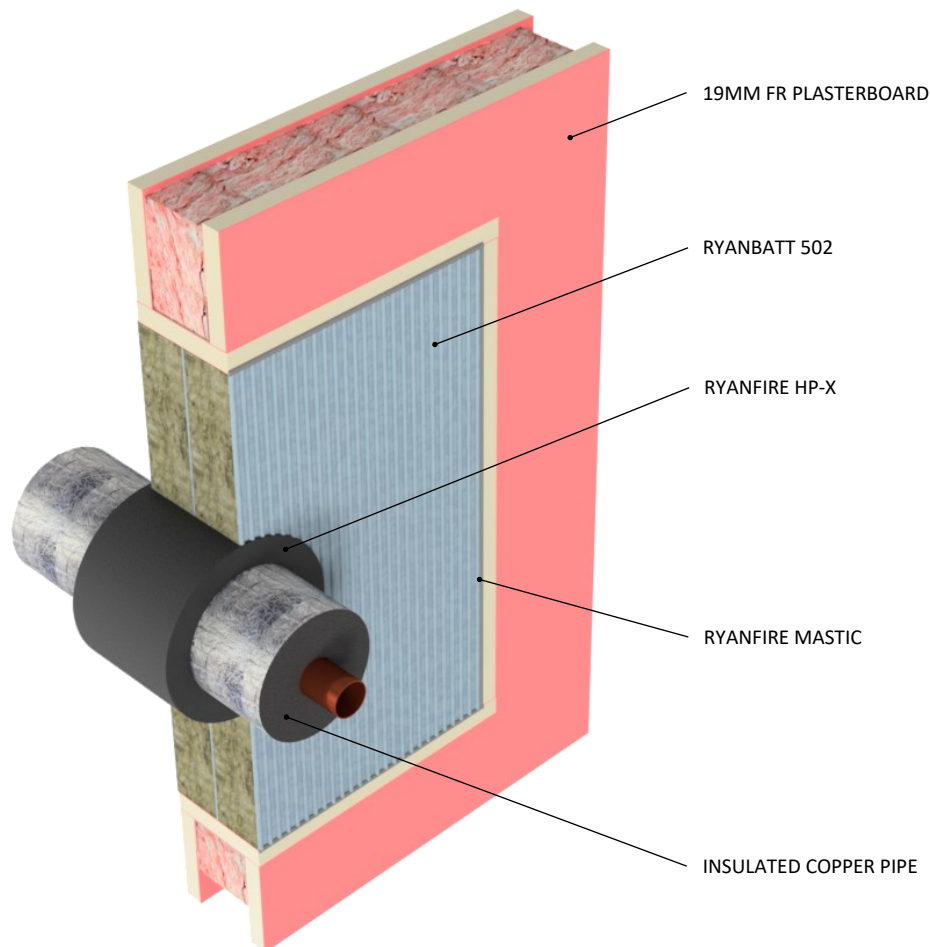


### INSTALLATION INSTRUCTIONS

1. ENSURE THE APERTURE IS CLEAN AND FREE OF DUST AND DEBRIS.
2. CUT THE RYANBATT 502 TO THE REQUIRED SIZE TO FIT AROUND THE INSULATED METAL PIPE TO ALLOW AN ANNULAR GAP OF 25MM, AND TO FIT TIGHTLY INTO THE FULLY LINED APERTURE.
3. CUT THE RYANBATT ACROSS THE SHORTEST DIMENSION, THROUGH THE MIDPOINT OF THE PENETRATION, TO ALLOW IT TO BE FIXED INTO PLACE.
4. APPLY RYANFIRE BRUSH GRADE MASTIC TO ALL THE INTERNAL EDGES OF THE APERTURE AND TO ALL THE EXPOSED & CUT EDGES OF THE RYANBATT.
5. INSERT THE RYANBATT 502 INTO THE OPENING TO SIT FLUSH WITH THE SURFACE OF THE WALL.
6. APPLY A 5MM BEAD OF RYANFIRE MASTIC TO THE PERIMETER OF THE RYANBATT AND TO ANY JOINTS AND GAPS.
7. REPEAT THIS PROCESS TO THE OPPOSITE SIDE OF THE WALL.
8. APPLY RYANFIRE HP-X INTO THE ANNULAR GAP BETWEEN 502 BOARD AND THE INSULATED PIPE, TO THE FULL DEPTH OF THE 502 BOARDS (100MM).



THIS SYSTEM MAY BE INSTALLED USING A PATRESS FIT CONFIGURATION.  
PLEASE CONTACT RYANFIRE TECHNICAL SUPPORT  
FOR MORE INFORMATION.

Products:	RYANBATT 502 RYANFIRE MASTIC RYANFIRE HP-X
Approval:	AS 1530.4:2014/AS 4072.1:2005
BK:	281
Ref:	24SFR00020
ID:	C, D
Scenario:	Penetration seal to XLPE (Thermobreak) insulated copper pipe
Services:	Up to Ø32mm copper with: 20-50mm Thermobreak insulation
Annular:	25mm
Construction:	102mm FR plasterboard / Masonry wall
Fire Integrity:	90 minutes
Fire Insulation:	60 minutes

Web based drawings are for example only. Fire performance of any system is dependant on, but not limited to, size of opening, substrate, if penetrations are passing through, type, size and number. Please refer to Ryanfire technical department for detailed and specific fire performance information.



RYANFIRE Technical Support:  
info@ryanfire.co.nz - Tel 09 443 0362

Drawing Title  
**Ryanbatt 502, HP-X to Thermobreak insulated  
copper pipes - 102mm plasterboard wall**

Scale	NTS	Date	July 2025
Drawing Number	V16.11	Rev	1.0

All errors and omissions excepted. The information contained within this drawing is believed to be correct on the date of publication, and is based upon tested and certified solutions. The policy of Ryanfire Products is one of constant improvement. Installers must ensure that they are following the latest published drawings, test evidence and instructions. Whilst Ryanfire Products will endeavour to keep its publications up to date, the accuracy of the information contained within this drawing may be affected by pertinent changes in the law or regulatory requirements and alterations or amendments to the specification of the manufactured products. Terms and conditions of sale apply.

Ryanfire Products owns and has copyright to these drawings. They are to be used only for the purpose for which they were intended and supplied and are not to be sold, transferred or made available for use by a third party. Any misuse of these drawings will result in legal proceedings.