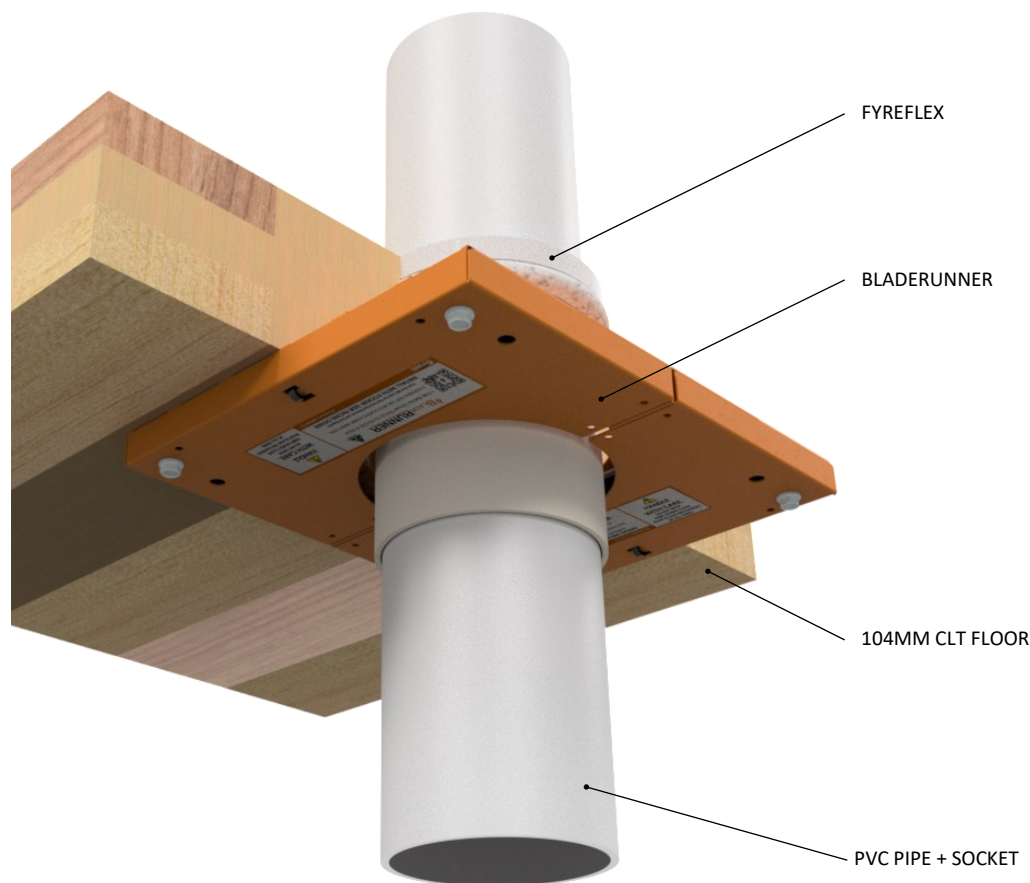


### INSTALLATION INSTRUCTIONS

1. ENSURE THE APERTURE IS CLEAN AND FREE OF DUST AND DEBRIS.
2. APPLY A 10MM DEEP BEAD OF TRAFALGAR FYREFLEX INTO THE ANNULAR GAP BETWEEN THE PIPE AND THE FLOOR, ON THE TOP SIDE OF THE FLOOR. USE PEF BACKING ROD TO REGULATE THE SEALANT DEPTH.
3. PLACE ONE HALF OF THE BLADERUNNER (WITH THE STICKER VISIBLE) AROUND THE PIPE + SOCKET AND UP AGAINST THE BOTTOM OF THE FLOOR.
4. SECURE THE BLADERUNNER IN PLACE WITH TWO 14G (6MM) X 80MM TIMBER SCREWS, USING THE PRE-FORMED FIXING HOLES. DO NOT OVERTIGHTEN THE SCREWS.
5. INSTALL THE SECOND HALF OF THE BLADERUNNER IN THE SAME WAY AS THE FIRST HALF.
6. THE BLADERUNNER MAY BE INSTALLED OFF CENTRE IF REQUIRED.

**NOTE: THE CABLE TIES FORM PART OF THE PRODUCT MECHANISM.**

**DO NOT CUT THE CABLE TIES**



Products:	TRAFALGAR BLADERUNNER TRAFALGAR FYREFLEX
Approvals:	AS 1530.4:2014/AS 4072.1:2005
BK:	327
Ref:	PF25061
ID:	D, E
Scenario:	Penetration seal to PVC pipe + socket joint
Services:	Ø50mm - Ø100mm PVC pipes + socket joints
Annular:	2 - 11mm
Construction:	104mm Cross Laminated Timber (CLT) floor (Red Stag)
Fire Integrity:	60 minutes
Fire Insulation:	60 minutes

Web based drawings are for example only. Fire performance of any system is dependant on, but not limited to size of opening, substrate, if penetrations are passing through, type, size and number. Please refer to Ryanfire technical department for detailed and specific fire performance information.

RYANFIRE Technical Support:  
info@ryanfire.co.nz - Tel 09 443 0362

Drawing Title

**BladeRUNNER to PVC pipe & socket  
104mm CLT floor**

Date	July 2025	Scale	NTS
Drawing Number	TF15.02	Rev	1.0

**All errors and omissions excepted.** The information contained within this drawing is believed to be correct on the date of publication, and is based upon tested and certified solutions. The policy of **Ryanfire Products** is one of constant improvement. Installers must ensure that they are following the latest published drawings, test evidence and instructions. Whilst **Ryanfire Products** will endeavour to keep its publications up to date, the accuracy of the information contained within this drawing may be affected by pertinent changes in the law or regulatory requirements and alterations or amendments to the specification of the **manufactured** products. Terms and conditions of sale apply.

Ryanfire Products owns and has copyright to these drawings. They are to be used only for the purpose for which they were intended and supplied and are not to be sold, transferred or made available for use by a third party. Any misuse of these drawings will result in legal proceedings.