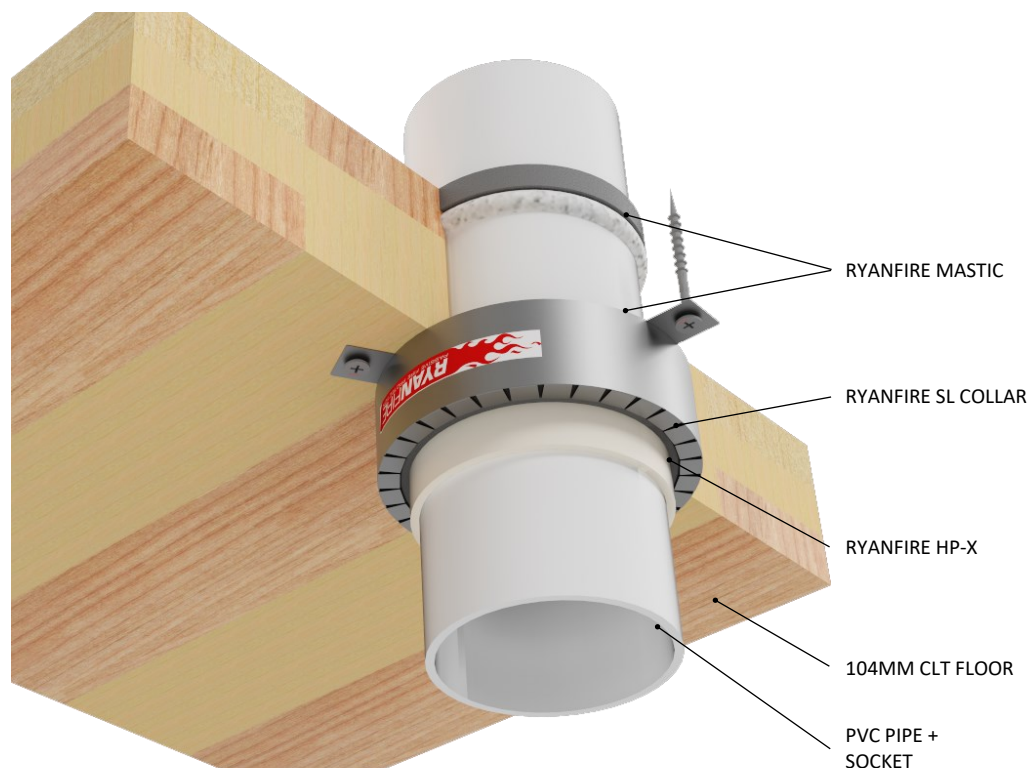


INSTALLATION INSTRUCTIONS

1. ENSURE THE APERTURE IS CLEAN AND FREE OF DUST AND DEBRIS.
2. APPLY 10MM DEEP RYANFIRE MASTIC INTO THE ANNULAR GAP BETWEEN THE PIPE AND THE FLOOR, ON BOTH SIDES OF THE FLOOR, USE PEF BACKING ROD TO REGULATE THE SEALANT DEPTH
3. SELECT THE CORRECT SIZE RYANFIRE SL COLLAR TO FIT AROUND THE PIPE AND SOCKET.
4. POSITION THE COLLAR AROUND THE PIPE AND SLIDE IT UP UNTIL IT IS UP AGAINST THE BOTTOM OF THE FLOOR.
5. FIX THE SL COLLAR TO THE CLT FLOOR USING 14G (6MM) X 80MM TIMBER SCREWS. ENSURE ALL FIXING POINTS ARE USED.
6. APPLY RYANFIRE HP-X INTO THE ANNULAR GAP BETWEEN THE PVC PIPE AND THE SL COLLAR, TO THE FULL DEPTH OF THE COLLAR.
7. CLEAN ANY EXCESS SEALANT WITH A DAMP CLOTH.



Products:	RYANFIRE SL COLLAR RYANFIRE MASTIC RYANFIRE HP-X
Approvals:	AS 1530.4/AS 4072.1
BK:	327
Ref:	PF25061
ID:	A, B
Scenario:	Penetration seal to PVC pipes + socket joint
Services:	Ø50mm - Ø100mm PVC pipe + socket joint
Construction:	104mm Cross Laminated Timber (CLT) floor (Red Stag)
Fire Integrity:	60 minutes
Fire Insulation:	60 minutes

Web based drawings are for example only. Fire performance of any system is dependant on, but not limited to, size of opening, substrate, if penetrations are passing through, type, size and number. Please refer to Ryanfire technical department for detailed and specific fire performance information.



RYANFIRE Technical Support:
info@ryanfire.co.nz - Tel 09 443 0362

Drawing Title
**SL Collar to PVC pipe & socket
104mm CLT floors**

Scale NTS	Date June 2025
Drawing Number V22.62	Rev 1.0

All errors and omissions excepted. The information contained within this drawing is believed to be correct on the date of publication, and is based upon tested and certified solutions. The policy of **Ryanfire Products** is one of constant improvement. Installers must ensure that they are following the latest published drawings, test evidence and instructions. Whilst **Ryanfire Products** will endeavour to keep its publications up to date, the accuracy of the information contained within this drawing may be affected by pertinent changes in the law or regulatory requirements and alterations or amendments to the specification of **the manufactured** products. Terms and conditions of sale apply.

Ryanfire Products owns and has copyright to these drawings. They are to be used only for the purpose for which they were intended and supplied and are not to be sold, transferred or made available for use by a third party. Any misuse of these drawings will result in legal proceedings.