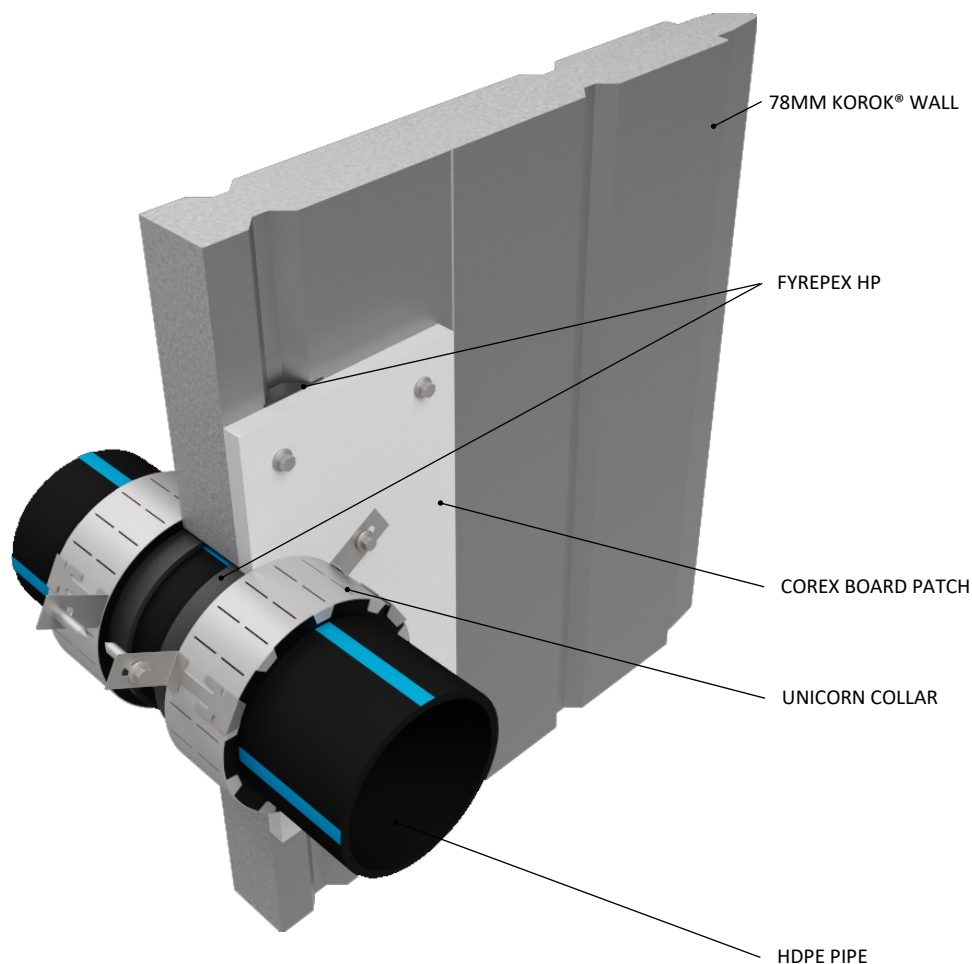


INSTALLATION INSTRUCTIONS

1. ENSURE THE APERTURE IS CLEAN AND FREE OF DUST AND DEBRIS.
2. APPLY TRAFALGAR FYREPEX HP INTO THE ANNULAR GAP BETWEEN THE HDPE PIPE AND THE KOROK® WALL.
3. CUT A PIECE OF COREX BOARD TO FIT AROUND THE PIPE, SO THAT IT OVERLAPS THE APERTURE BY MINIMUM 100MM IN ALL DIRECTIONS.
4. CUT THE COREX INTO TWO PIECES, ACROSS THE SHORTEST DIMENSION, THROUGH THE MIDPOINT OF THE PENETRATION TO ALLOW IT TO BE FIXED INTO PLACE.
5. APPLY FYREPEX HP ONTO THE FACE OF THE COREX WHERE IT WILL MATE WITH THE WALL, INTO ANY GAPS / THROUGHES BETWEEN THE BOARD AND THE KOROK, AND INTO THE ANNULAR GAP BETWEEN THE COREX AND THE PIPE.
6. SECURE THE COREX INTO PLACE WITH 12G X 30MM TEK SCREWS, 25MM FROM EACH CORNER OF EACH PIECE OF COREX
7. MEASURE AND CUT THE CORRECT LENGTH OF UNICORN COLLAR TO FIT AROUND THE PIPE.
8. SECURE THE COLLAR AROUND THE PIPE USING A MOUNTING BRACKET. ATTACH A FURTHER TWO BRACKETS TO THE COLLAR, SPACED EQUALLY AROUND THE COLLAR.
9. SLIDE THE COLLAR UP AGAINST THE COREX BOARD AND FIX INTO PLACE WITH 12G X 30MM TEK SCREWS. ENSURE TO FIX THROUGH ALL BRACKETS.
10. REPEAT THIS PROCESS ON THE OPPOSITE SIDE OF THE WALL, HOWEVER THE COREX BOARD NEED ONLY BE INSALLED ON ONE SIDE OF THE WALL.



| | |
|-------------------------|---|
| Products: | TRAFALGAR UNICORN COLLAR TRAFALGAR FYREPEX HP TRAFALGAR COREX |
| Approvals: | AS 1530.4:2014/AS 4072.1:2005 |
| BK: | 314 |
| Ref: | 24SFR00053 |
| ID: | 2, 3 |
| Scenario: | Penetration seal to HDPE pipes |
| Services: | Up to Ø110mm HDPE pipes |
| Annular: | 0 - 10mm |
| Construction: | 78mm KOROK® Wall |
| Fire Resistance: | Ø40mm: -/120/120 Ø110mm: -/120/120 |

Web based drawings are for example only. Fire performance of any system is dependant on, but not limited to size of opening, substrate, if penetrations are passing through, type, size and number. Please refer to Ryanfire technical department for detailed and specific fire performance information.

RYANFIRE Technical Support:
info@ryanfire.co.nz - Tel 09 443 0362

Drawing Title
**UniCORN collar & Corex to HDPE pipe
78mm KOROK® Wall**

| | | | |
|----------------|-------------------|-------|------------|
| Date | April 2025 | Scale | NTS |
| Drawing Number | TF10.02 | Rev | 1.0 |

All errors and omissions excepted. The information contained within this drawing is believed to be correct on the date of publication, and is based upon tested and certified solutions. The policy of **Ryanfire Products** is one of constant improvement. Installers must ensure that they are following the latest published drawings, test evidence and instructions. Whilst **Ryanfire Products** will endeavour to keep its publications up to date, the accuracy of the information contained within this drawing may be affected by pertinent changes in the law or regulatory requirements and alterations or amendments to the specification of the **manufactured** products. Terms and conditions of sale apply.

Ryanfire Products owns and has copyright to these drawings. They are to be used only for the purpose for which they were intended and supplied and are not to be sold, transferred or made available for use by a third party. Any misuse of these drawings will result in legal proceedings.