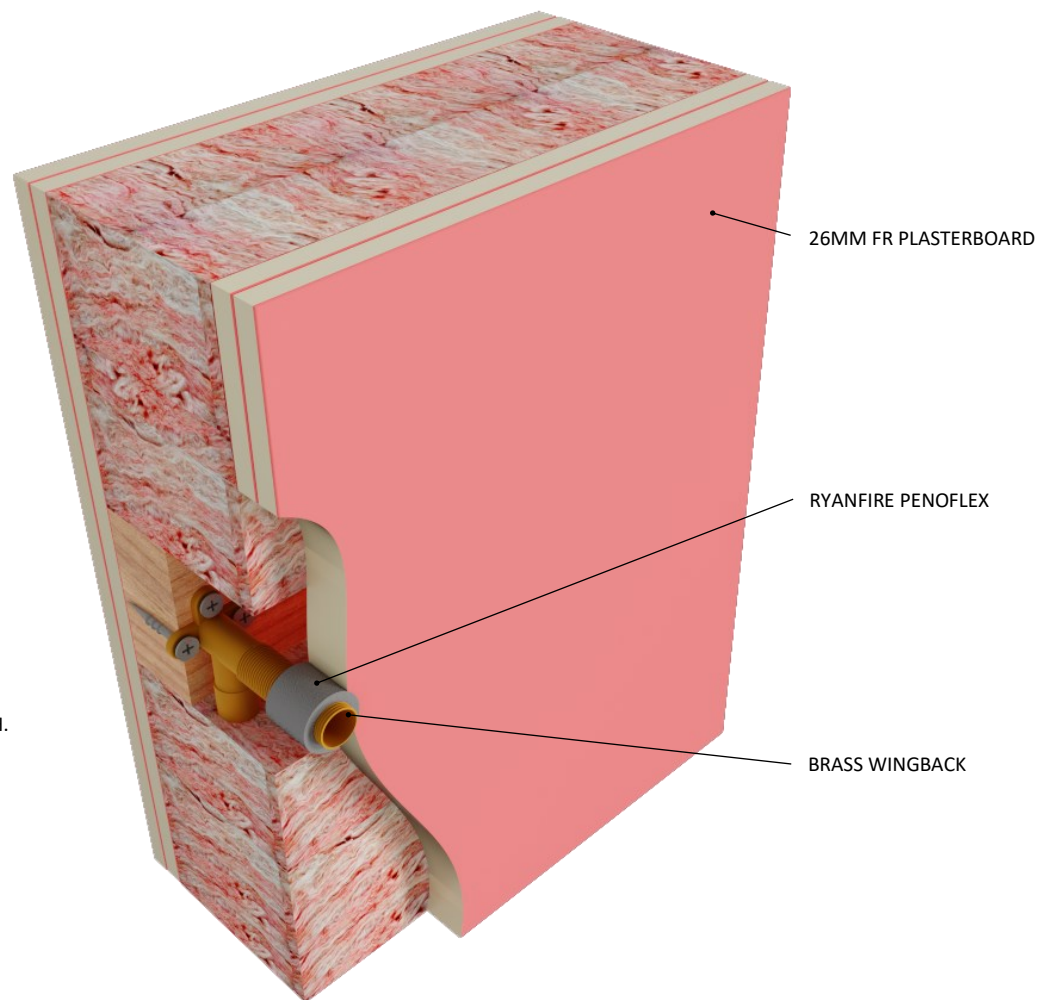


INSTALLATION INSTRUCTIONS

1. ENSURE THE APERTURE IS CLEAN AND FREE OF DUST AND DEBRIS.
2. APPLY RYANFIRE PENOFLEX INTO THE ANNULAR GAP BETWEEN THE BRASS WINGBACK AND THE PLASTERBOARD WALL TO THE FULL DEPTH OF THE PLASTERBOARD (26MM).
3. REMOVE ANY EXCESS SEALANT WITH A DAMP CLOTH.



Products: RYANFIRE PENOFLEX
Approvals: AS 1530.4:2014/AS 4072.1:2005
BK: 273
Ref: 24SFR00012
ID: D

Scenario: Penetration seal to brass wingback

Services: Up to Ø15mm brass wingback

Construction: 116mm FR plasterboard wall

Annular: 0-5mm

Fire Resistance: 120 minutes

Fire Insulation: 120 minutes

Web based drawings are for example only. Fire performance of any system is dependant on, but not limited to size of opening, substrate, if penetrations are passing through, type, size and number. Please refer to Ryanfire technical department for detailed and specific fire performance information.



RYANFIRE Technical Support:
info@ryanfire.co.nz - Tel 09 443 0362

Drawing Title

**Ryanfire Penoflex to brass wingback
116mm plasterboard wall**

Scale

NTS

Date

May 2025

Drawing Number

V1.25

Rev

1.0

All errors and omissions excepted. The information contained within this drawing is believed to be correct on the date of publication, and is based upon tested and certified solutions. The policy of **Ryanfire Products** is one of constant improvement. Installers must ensure that they are following the latest published drawings, test evidence and instructions. Whilst **Ryanfire Products** will endeavour to keep its publications up to date, the accuracy of the information contained within this drawing may be affected by pertinent changes in the law or regulatory requirements and alterations or amendments to the specification of **the manufactured** products. Terms and conditions of sale apply.

Ryanfire Products owns and has copyright to these drawings. They are to be used only for the purpose for which they were intended and supplied and are not to be sold, transferred or made available for use by a third party. Any misuse of these drawings will result in legal proceedings.