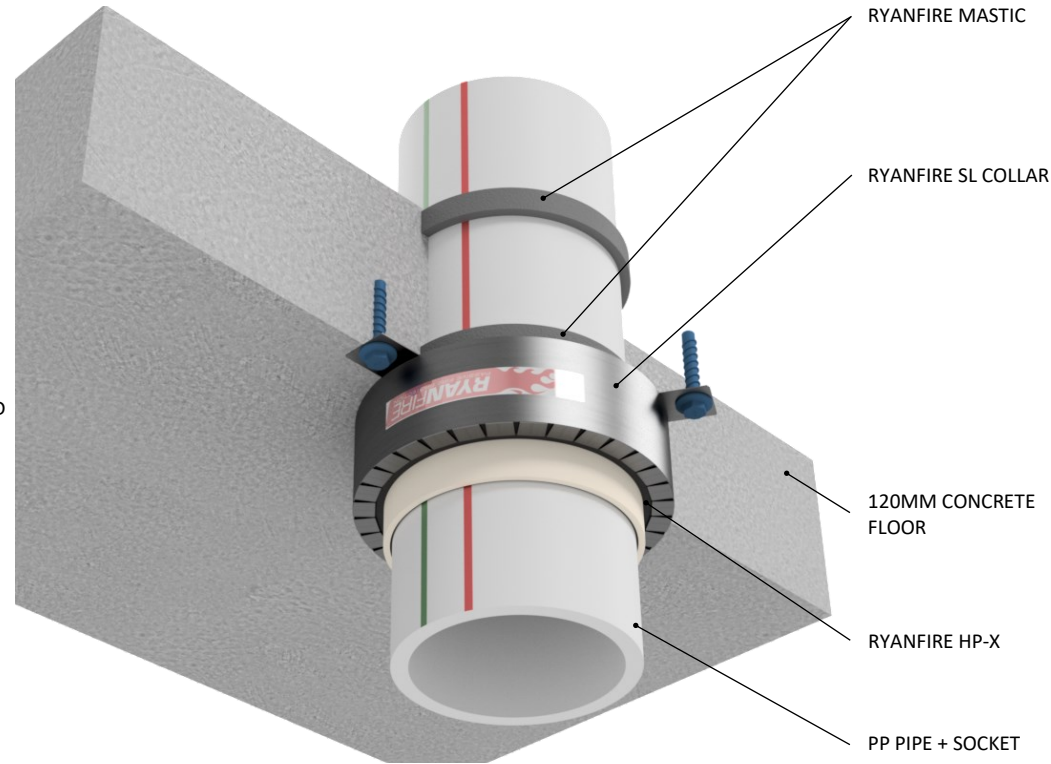


### INSTALLATION INSTRUCTIONS

1. ENSURE THE APERTURE IS CLEAN AND FREE OF DUST AND DEBRIS.
2. APPLY RYANFIRE MASTIC INTO THE ANNULAR GAP BETWEEN THE PIPE AND THE FLOOR, ON BOTH SIDES OF THE FLOOR.
3. SELECT THE CORRECT SIZE SL COLLAR TO FIT AROUND THE PP PIPE AND SOCKET JOINT.
4. POSITION THE COLLAR AROUND THE PIPE AND SLIDE IT UP AGAINST THE BOTTOM OF THE FLOOR.
5. FIX THE SL COLLAR TO THE CONCRETE FLOOR USING 6 X 32MM CONCRETE ANCHOR BOLTS. ENSURE ALL FIXING POINTS ARE USED.
6. APPLY RYANFIRE HP-X INTO THE ANNULAR GAP BETWEEN THE PIPE AND THE COLLAR, TO THE FULL DEPTH OF THE COLLAR.
7. CLEAN ANY EXCESS SEALANT WITH A DAMP CLOTH.



<b>Products:</b>	RYANFIRE SL COLLAR RYANFIRE HP-X RYANFIRE MASTIC
<b>Approvals:</b>	AS 1530.4:2014/AS 4072.1:2005
<b>BK:</b>	296 / 303
<b>Ref:</b>	24SFR00031 / 24SFR00037
<b>ID:</b>	H / D
<b>Scenario:</b>	Penetration seal to PP pipes + socket joint
<b>Services:</b>	Up to Ø110mm PP pipe + socket joint
<b>Annular:</b>	0 - 6mm
<b>Construction:</b>	120mm concrete floor
<b>Fire Integrity:</b>	120 minutes
<b>Fire Insulation:</b>	120 minutes

Web based drawings are for example only. Fire performance of any system is dependant on, but not limited to, size of opening, substrate, if penetrations are passing through, type, size and number. Please refer to Ryanfire technical department for detailed and specific fire performance information.



RYANFIRE Technical Support:  
info@ryanfire.co.nz - Tel 09 443 0362

Drawing Title  
**Ryanfire SL Collar to PP pipe & socket  
120mm concrete floors**

Scale <b>NTS</b>	Date <b>May 2025</b>
Drawing Number <b>V25.35</b>	Rev <b>2.0</b>

**All errors and omissions excepted.** The information contained within this drawing is believed to be correct on the date of publication, and is based upon tested and certified solutions. The policy of **Ryanfire Products** is one of constant improvement. Installers must ensure that they are following the latest published drawings, test evidence and instructions. Whilst **Ryanfire Products** will endeavour to keep its publications up to date, the accuracy of the information contained within this drawing may be affected by pertinent changes in the law or regulatory requirements and alterations or amendments to the specification of **the manufactured** products. Terms and conditions of sale apply.

Ryanfire Products owns and has copyright to these drawings. They are to be used only for the purpose for which they were intended and supplied and are not to be sold, transferred or made available for use by a third party. Any misuse of these drawings will result in legal proceedings.