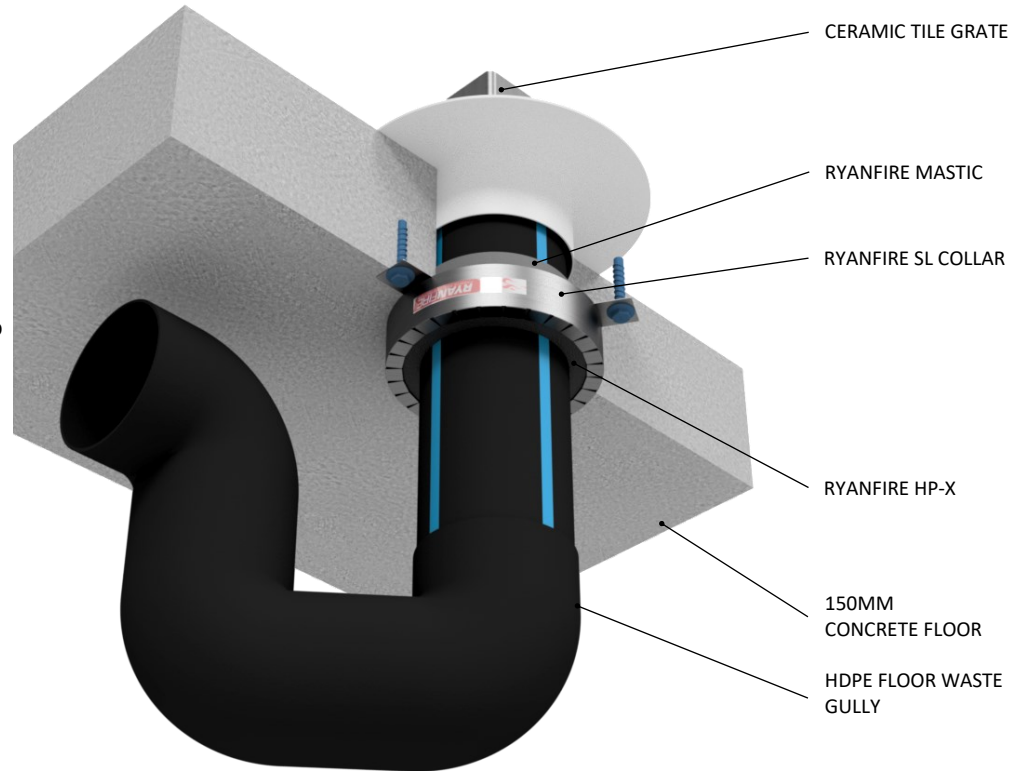


INSTALLATION INSTRUCTIONS

1. ENSURE THE APERTURE IS CLEAN AND FREE OF DUST AND DEBRIS.
2. APPLY RYANFIRE MASTIC INTO THE ANNULAR GAP BETWEEN THE HDPE PIPE AND THE FLOOR, ON THE BOTTOM OF THE FLOOR.
3. SELECT THE CORRECT SIZE SL COLLAR TO FIT AROUND THE FLOOR WASTE GULLY.
4. POSITION THE RYANFIRE SL COLLAR AROUND THE PIPE AND SLIDE IT UP UNTIL IT IS UP AGAINST THE BOTTOM OF THE FLOOR.
5. FIX WITH SL COLLAR TO THE FLOOR USING 6MM X 32MM CONCRETE ANCHOR BOLTS. ENSURE ALL FIXING POINTS ARE USED.
6. APPLY RYANFIRE HP-X INTO THE ANNULAR GAP BETWEEN THE HDPE PIPE AND THE COLLAR, TO THE FULL DEPTH OF THE COLLAR.
7. CLEAN ANY EXCESS SEALANT WITH A DAMP CLOTH.



| | |
|-------------------------|---|
| Products: | RYANFIRE SL COLLAR RYANFIRE MASTIC RYANFIRE HP-X |
| Approvals: | AS 1530.4/AS 4072.1 |
| BK: | 252 |
| Ref: | 23SFR00079 |
| ID: | C, D |
| Scenario: | Penetration seal to HDPE Floor Waste Gully |
| Services: | Up to Ø100mm HDPE Floor Waste + ceramic tile grate |
| Construction: | 150mm concrete floor |
| Annular: | 0-10mm |
| Fire Integrity: | 120 minutes |
| Fire Insulation: | 120 minutes |

Web based drawings are for example only. Fire performance of any system is dependant on, but not limited to, size of opening, substrate, if penetrations are passing through, type, size and number. Please refer to Ryanfire technical department for detailed and specific fire performance information.



RYANFIRE Technical Support:
info@ryanfire.co.nz - Tel 09 443 0362

Drawing Title
**SL Collar to HDPE FWG & ceramic tile
150mm concrete floor**

| | | | |
|----------------|---------------|------|-------------------|
| Scale | NTS | Date | March 2024 |
| Drawing Number | V22.50 | Rev | 1.0 |

All errors and omissions excepted. The information contained within this drawing is believed to be correct on the date of publication, and is based upon tested and certified solutions. The policy of Ryanfire Products Ltd is one of constant improvement. Installers must ensure that they are following the latest published drawings, test evidence and instructions. Whilst Ryanfire Products Ltd will endeavour to keep its publications up to date, the accuracy of the information contained within this drawing may be affected by pertinent changes in the law or regulatory requirements and alterations or amendments to the specification of the manufactured products. Terms and conditions of sale apply.

Ryanfire Products Ltd owns and has copyright to these drawings. They are to be used only for the purpose for which they were intended and supplied and are not to be sold, transferred or made available for use by a third party. Any misuse of these drawings will result in legal proceedings.