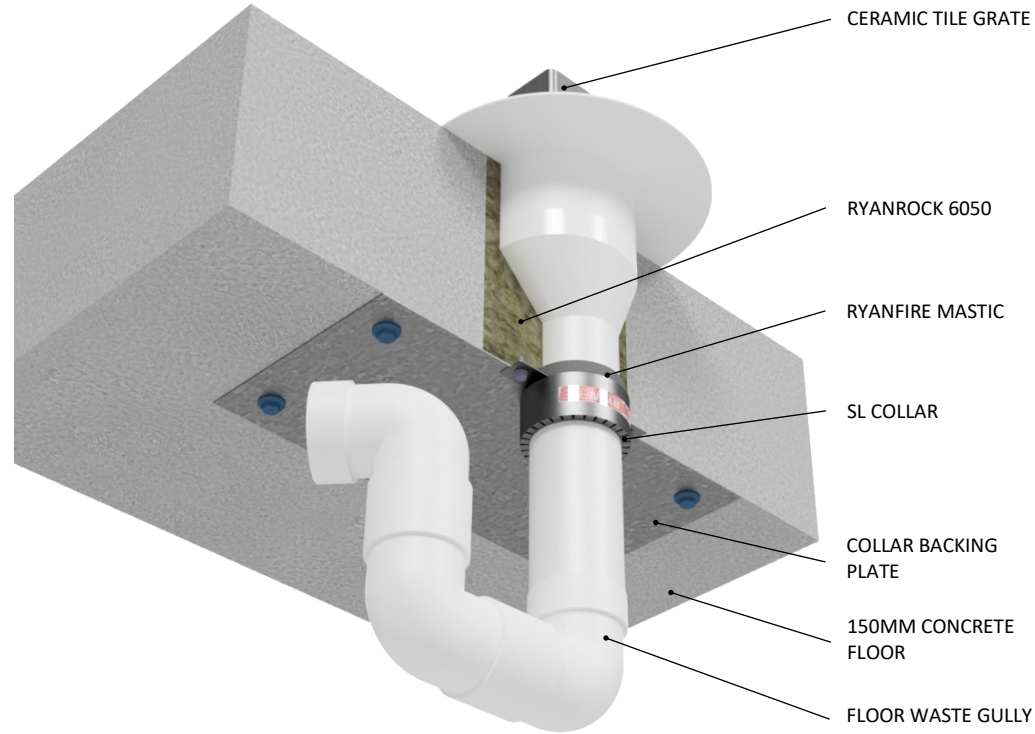


INSTALLATION INSTRUCTIONS

1. ENSURE THE APERTURE IS CLEAN AND FREE OF LOOSE CEMENT, DUST AND DEBRIS.
2. APPLY RYANROCK 6050 INTO THE ANNULAR GAP BETWEEN THE FLOOR WASTE GULLY AND THE FLOOR, TO THE FULL DEPTH OF THE FLOOR. BE SURE TO PACK IT IN TIGHTLY.
3. INSTALL THE RYANFIRE COLLAR BACKING PLATE, BRINGING THE TWO HALVES TOGETHER TO FIT TIGHTLY AROUND THE PIPE. FIX THE BACKING PLATE INTO THE FLOOR USING 6MM X 32MM CONCRETE ANCHORS, 25MM FROM EACH EDGE IN EACH CORNER OF BOTH PIECES.
4. APPLY RYANFIRE MASTIC TO THE JOINT BETWEEN THE PIPE AND THE BACKING PLATE.
5. SELECT THE CORRECT SIZE SL COLLAR TO FIT AROUND THE PIPE.
6. FIX THE COLLAR TO THE BACKING PLATE USING 12G X 20MM TEK SCREWS THROUGH ALL FIXING TABS.
7. CLEAN ANY EXCESS MASTIC USING A DAMP CLOTH.



Products:	RYANFIRE SL COLLAR RYANFIRE MASTIC RYANROCK 6050 COLLAR BACKING PLATE
Approvals:	AS 1530.4/AS 4072.1
BK:	252
Ref:	23SFR00079
ID:	A, B
Scenario:	Penetration seal to PVC Floor Waste Gully through an oversized core hole
Services:	Up to Ø50mm PVC Floor Waste + ceramic tile grate
Construction:	150mm concrete floor
Core Hole:	Ø123mm
Annular:	30– 70mm
Fire Integrity:	120 minutes
Fire Insulation:	120 minutes

Web based drawings are for example only. Fire performance of any system is dependant on, but not limited to, size of opening, substrate, if penetrations are passing through, type, size and number. Please refer to Ryanfire technical department for detailed and specific fire performance information.



RYANFIRE Technical Support:
info@ryanfire.co.nz - Tel 09 443 0362

Drawing Title
SL Collar & backing plate to PVC FWG & ceramic tile 150mm concrete floor

Scale	NTS	Date	March 2024
Drawing Number	V22.49	Rev	1.0

All errors and omissions excepted. The information contained within this drawing is believed to be correct on the date of publication, and is based upon tested and certified solutions. The policy of Ryanfire Products Ltd is one of constant improvement. Installers must ensure that they are following the latest published drawings, test evidence and instructions. Whilst Ryanfire Products Ltd will endeavour to keep its publications up to date, the accuracy of the information contained within this drawing may be affected by pertinent changes in the law or regulatory requirements and alterations or amendments to the specification of the manufactured products. Terms and conditions of sale apply.

Ryanfire Products Ltd owns and has copyright to these drawings. They are to be used only for the purpose for which they were intended and supplied and are not to be sold, transferred or made available for use by a third party. Any misuse of these drawings will result in legal proceedings.