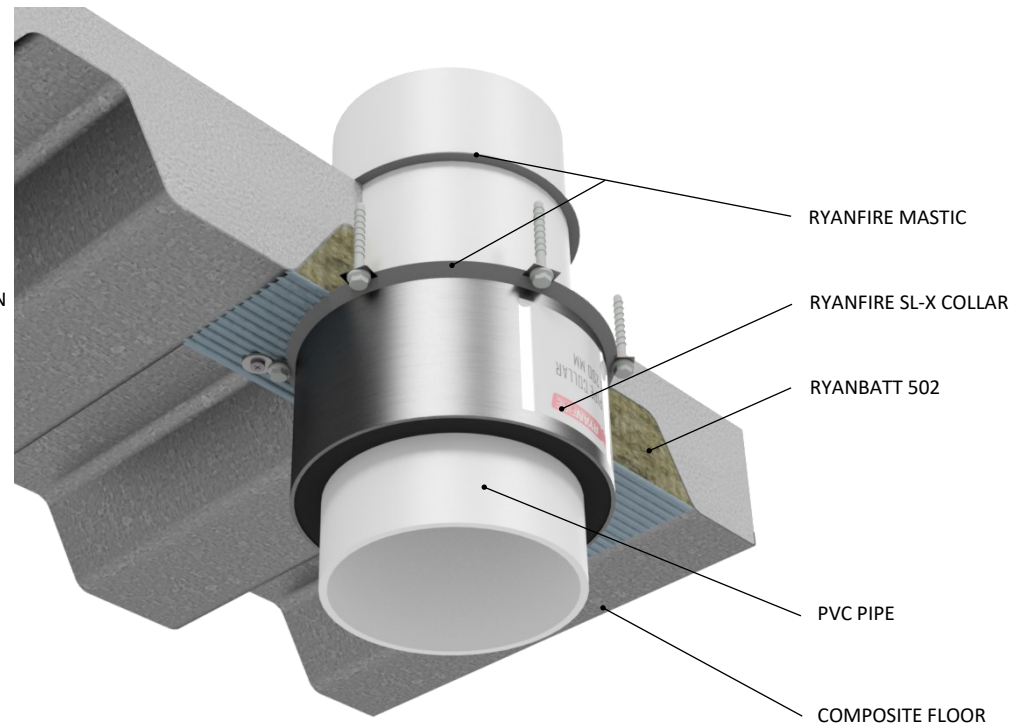
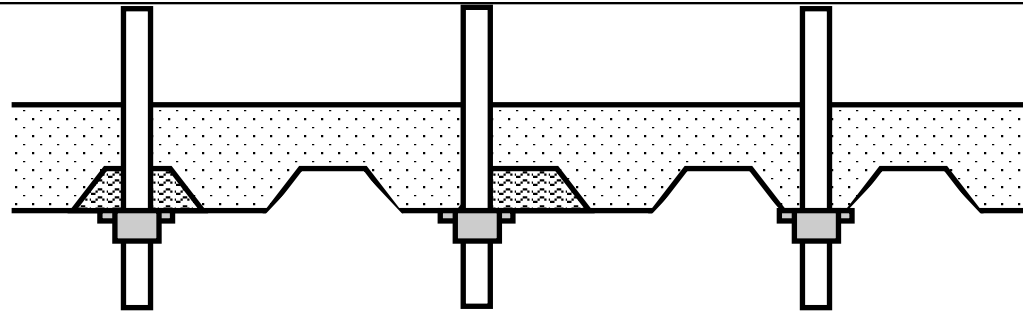


INSTALLATION INSTRUCTIONS

1. ENSURE THE APERTURE IS CLEAN, FREE OF DUST AND DEBRIS.
2. CUT THE RYANBATT 502 TO THE CORRECT SIZE TO FILL THE TRAPEZOIDAL PROFILE. ENSURE THE RYANBATT EXTENDS 100MM EITHER SIDE OF THE CORED APERTURE.
3. APPLY RYANFIRE BRUSH GRADE MASTIC TO WHERE THE RYANBATT WILL MATE WITH THE SURFACE OF THE FLOOR, AND TO ALL CUT AND EXPOSED EDGES OF THE RYANBATT.
4. SECURE RYANBATT 502 INTO POSITION USING 75MM CONCRETE ANCHORS AND PENNY WASHERS 50MM FROM THE EDGE AND AT CENTRES NOT EXCEEDING 200MM.
5. SEAL ANY GAPS AND JOINTS WITH RYANFIRE BRUSH GRADE MASTIC.
6. APPLY RYANFIRE MASTIC TO THE JUNCTION BETWEEN THE PVC PIPE AND THE FLOOR / RYANBATT ON BOTH SIDES OF THE FLOOR.
7. FIT THE SL-X COLLAR AROUND THE PVC PIPE.
8. SLIDE THE COLLAR ALONG THE PIPE UNTIL IT IS HARD UP AGAINST THE UNDERSIDE OF THE FLOOR / RYANBATT 502.
9. FIX THE RYANFIRE SL COLLAR INTO POSITION USING A COMBINATION OF:
 - A. MINIMUM 32MM CONCRETE ANCHORS AND PENNY WASHERS FOR THE FLOOR PROFILE PEAKS.
 - B. MINIMUM 75MM CONCRETE ANCHORS AND PENNY WASHERS FOR THE FLOOR PROFILE TROUGHS.
10. FIXINGS MUST HAVE A MINIMUM 25MM EMBEDMENT INTO THE CONCRETE.
11. APPLY A NOMINAL 5MM BEAD OF RYANFIRE MASTIC TO THE JUNCTION BETWEEN THE COLLAR AND THE FLOOR / RYANBATT.



Products:	RYANBATT 502 RYANFIRE SL-X COLLAR RYANFIRE MASTIC RYANFIRE BRUSH GRADE MASTIC
Approvals:	AS 1530.4/AS 4072.1
BK:	263
Ref:	24SFR0008
ID:	A
Scenario:	Penetration seal to PVC pipes
Construction:	125mm composite floor
Services:	Ø250mm PVC pipes
Fire Integrity:	90 minutes
Fire Insulation:	90 minutes

Web based drawings are for example only. Fire performance of any system is dependant on, but not limited to size of opening, substrate, if penetrations are passing through, type, size and number. Please refer to Ryanfire technical department for detailed and specific fire performance information.



RYANFIRE Technical Support:
info@ryanfire.co.nz - Tel 09 443 0362

Drawing Title
SL-X Collar to PVC pipes
125mm composite floor

Scale	NTS	Date	March 2024
Drawing Number	V23.23	Rev	1.0

All errors and omissions excepted. The information contained within this drawing is believed to be correct on the date of publication, and is based upon tested and certified solutions. The policy of Ryanfire Products Ltd is one of constant improvement. Installers must ensure that they are following the latest published drawings, test evidence and instructions. Whilst Ryanfire Products Ltd will endeavour to keep its publications up to date, the accuracy of the information contained within this drawing may be affected by pertinent changes in the law or regulatory requirements and alterations or amendments to the specification of the manufactured products. Terms and conditions of sale apply.

Ryanfire Products Ltd owns and has copyright to these drawings. They are to be used only for the purpose for which they were intended and supplied and are not to be sold, transferred or made available for use by a third party. Any misuse of these drawings will result in legal proceedings.