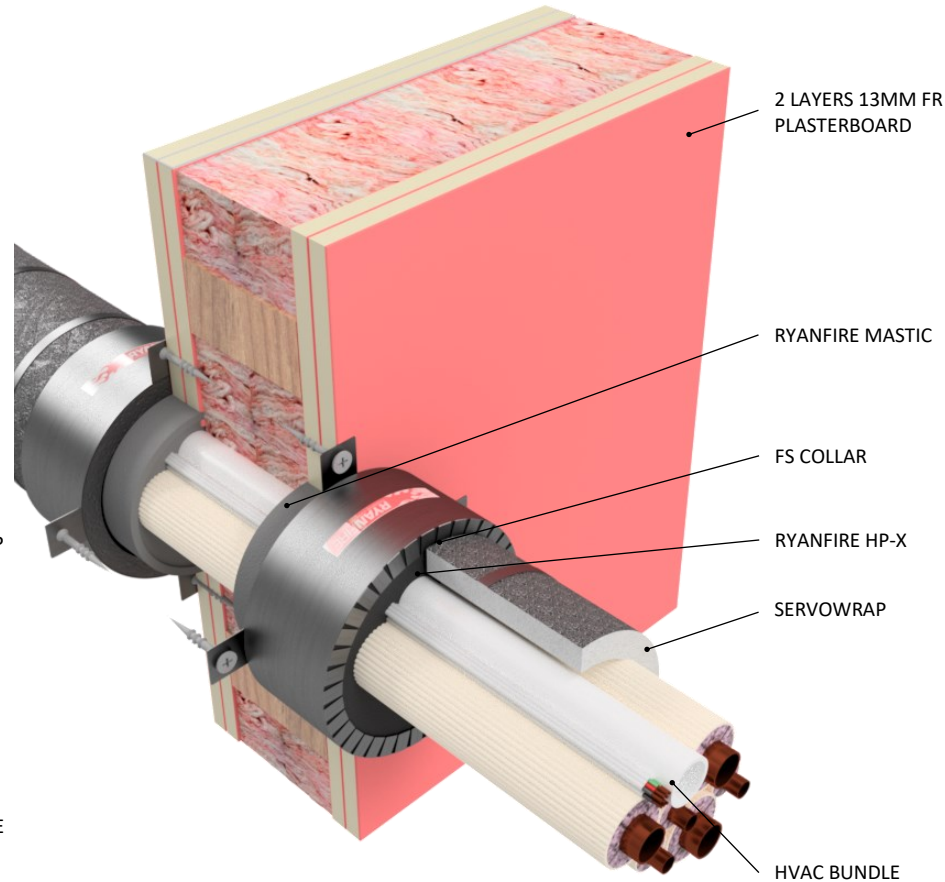


INSTALLATION INSTRUCTIONS

1. ENSURE THE APERTURE IS CLEAN AND FREE OF DUST AND DEBRIS.
2. APPLY RYANFIRE MASTIC INTO THE ANNULAR GAP BETWEEN THE SERVICE BUNDLE AND THE PLASTERBOARD WALL.
3. POSITION THE FS COLLAR AROUND THE HVAC BUNDLE AND SLIDE IT UP TO THE SURFACE OF THE WALL.
4. FIX THE COLLAR TO THE WALL WITH 8G X 50MM PLASTERBOARD SCREWS. ENSURE ALL FIXING POINTS ARE USED.
5. APPLY RYANFIRE HP-X INTO THE ANNULAR GAP BETWEEN THE HVAC BUNDLE AND THE COLLAR TO THE FULL DEPTH OF THE COLLAR.
6. WRAP ONE LAYER OF 300MM WIDE SERVOWRAP AROUND THE BUNDLE ENSURING A 100MM OVERLAP ON THE LONG EDGE. SLIDE THE SERVOWRAP ALONG THE HVAC BUNDLE UNTIL IT IS UP AGAINST THE FS COLLAR.
7. SECURE THE SERVOWRAP IN PLACE USING STEEL CABLE TIES, 50MM FROM EACH END AND ONE NOMINALLY IN THE CENTRE.
8. APPLY FOIL TAPE TO ANY EXPOSED EDGES OF THE SERVOWRAP.
9. REPEAT THIS PROCESS ON THE OPPOSITE SIDE OF THE WALL.
10. REMOVE ANY EXCESS SEALANT WITH A DAMP CLOTH.



Products:	RYANFIRE FS COLLAR RYANFIRE HP-X RYANFIRE MASTIC RYANFIRE SERVOWRAP
Approvals:	AS 1530.4/AS 4072.1
BK:	253
Ref:	22SFR00083
ID:	F
Scenario:	Penetration seal to HVAC bundle (heat pump services)
Services:	Up to 3 sets pair coil copper pipes 5 TPS cables Ø20mm PVC pipe
Construction:	142mm FR plasterboard / Masonry Wall
Aperture:	Max Ø116mm
Annular:	10 - 25mm
Fire Integrity:	120 minutes
Fire Insulation:	120 minutes

Web based drawings are for example only. Fire performance of any system is dependant on, but not limited to size of opening, substrate, if penetrations are passing through, type, size and number. Please refer to Ryanfire technical department for detailed and specific fire performance information.



RYANFIRE Technical Support:
info@ryanfire.co.nz - Tel 09 443 0362

Drawing Title
**FS Collar, HP-X & Servowrap to HVAC bundle
142mm plasterboard wall**

Scale	NTS	Date	March 2024
Drawing Number	V14.19	Rev	2.0

All errors and omissions excepted. The information contained within this drawing is believed to be correct on the date of publication, and is based upon tested and certified solutions. The policy of Ryanfire Products Ltd is one of constant improvement. Installers must ensure that they are following the latest published drawings, test evidence and instructions. Whilst Ryanfire Products Ltd will endeavour to keep its publications up to date, the accuracy of the information contained within this drawing may be affected by pertinent changes in the law or regulatory requirements and alterations or amendments to the specification of the manufactured products. Terms and conditions of sale apply.

Ryanfire Products Ltd owns and has copyright to these drawings. They are to be used only for the purpose for which they were intended and supplied and are not to be sold, transferred or made available for use by a third party. Any misuse of these drawings will result in legal proceedings.