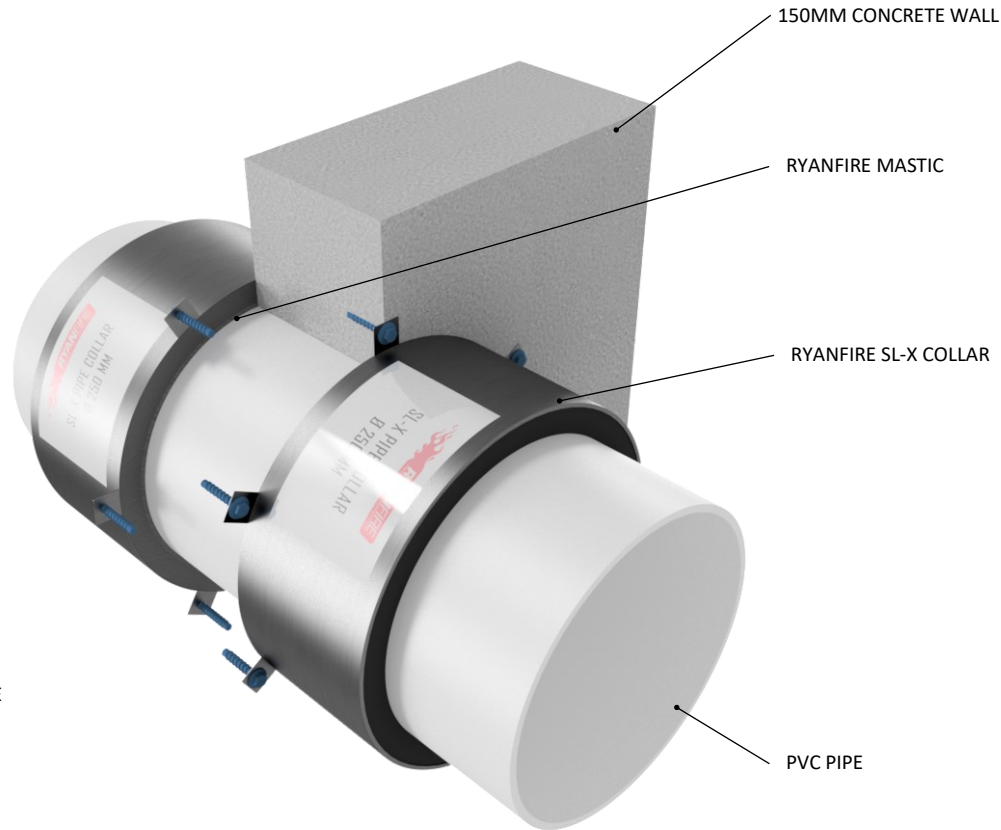


INSTALLATION INSTRUCTIONS

1. ENSURE THE APERTURE IS CLEAN AND FREE OF DUST AND DEBRIS.
2. APPLY RYANFIRE MASTIC INTO THE ANNULAR GAP BETWEEN THE PVC PIPE AND THE CONCRETE WALL.
3. SELECT THE CORRECT SIZE RYANFIRE SL-X COLLAR TO FIT AROUND THE PVC PIPE.
4. SECURE THE COLLAR AROUND THE PIPE AND SLIDE IT UP UNTIL IT IS UP AGAINST THE SURFACE OF THE WALL. FIX THE COLLAR INTO PLACE USING 32MM CONCRETE ANCHORS. ENSURE ALL FIXING POINTS ARE USED.
5. REPEAT THIS PROCESS ON THE OPPOSITE SIDE OF THE WALL.



Products:	RYANFIRE SL-X COLLAR RYANFIRE MASTIC
Approvals:	AS 1530.4/AS 4072.1
BK:	248 / 258
Ref:	23SFR00086 / 23SFR00098
ID:	C / C
Scenario:	Penetration seal to PVC pipe
Services:	Ø200- Ø250mm uPVC pipes
Construction:	150mm concrete wall
Fire Resistance:	Ø200mm : -/120/- Ø250mm : -/120/120

Web based drawings are for example only. Fire performance of any system is dependant on, but not limited to size of opening, substrate, if penetrations are passing through, type, size and number. Please refer to Ryanfire technical department for detailed and specific fire performance information.



RYANFIRE Technical Support:
info@ryanfire.co.nz - Tel 09 443 0362

Drawing Title
Ryanfire SL-X Collar to PVC pipes
150mm concrete wall

Scale	Date
NTS	January 2024

Drawing Number	Rev
V28.4	2.0

All errors and omissions excepted. The information contained within this drawing is believed to be correct on the date of publication, and is based upon tested and certified solutions. The policy of Ryanfire Products Ltd is one of constant improvement. Installers must ensure that they are following the latest published drawings, test evidence and instructions. Whilst Ryanfire Products Ltd will endeavour to keep its publications up to date, the accuracy of the information contained within this drawing may be affected by pertinent changes in the law or regulatory requirements and alterations or amendments to the specification of the manufactured products. Terms and conditions of sale apply.

Ryanfire Products Ltd owns and has copyright to these drawings. They are to be used only for the purpose for which they were intended and supplied and are not to be sold, transferred or made available for use by a third party. Any misuse of these drawings will result in legal proceedings.