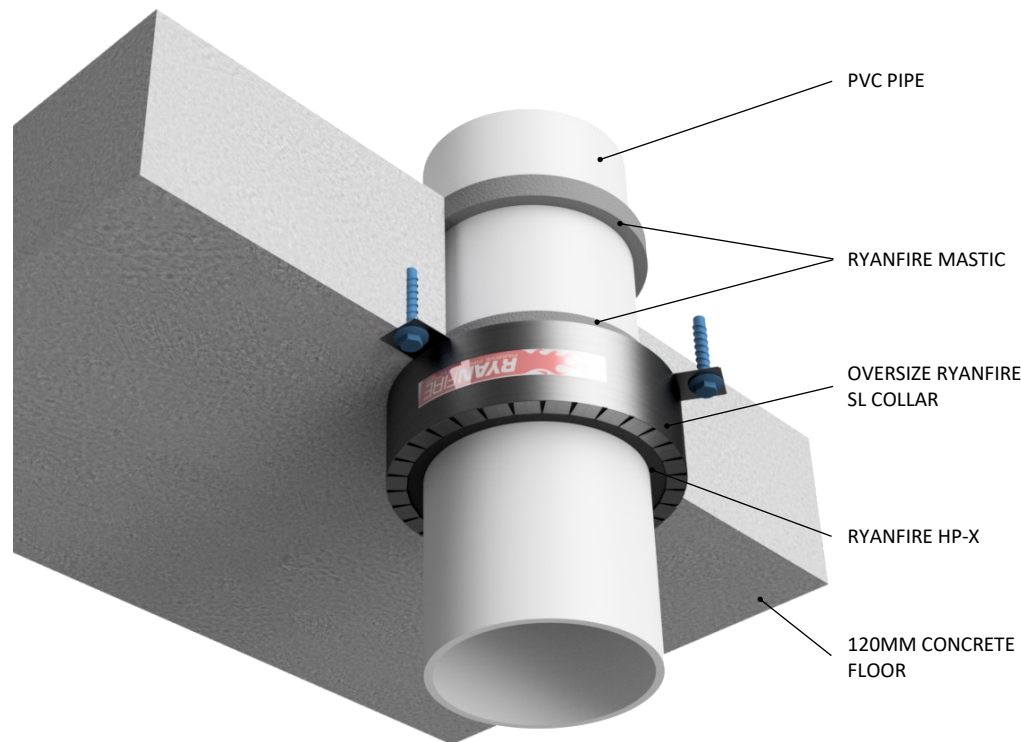


### INSTALLATION INSTRUCTIONS

1. ENSURE THE APERTURE IS CLEAN AND FREE OF DUST AND DEBRIS.
2. APPLY RYANFIRE MASTIC INTO THE ANNULAR GAP BETWEEN THE PIPE AND THE FLOOR, ON BOTH SIDES OF THE FLOOR.
3. SELECT A RYANFIRE SL COLLAR THAT IS ONE SIZE LARGER THAN WHAT WOULD USUALLY BE REQUIRED TO FIT AROUND THE PIPE. E.G FOR Ø40MM PIPE USE AN SL 55 INSTEAD OF AN SL 40.
4. POSITION THE COLLAR AROUND THE PIPE AND SLIDE IT UP UNTIL IT IS FLUSH WITH THE BOTTOM OF THE FLOOR.
5. FIX THE SL COLLAR TO THE CONCRETE FLOOR USING 32MM CONCRETE ANCHORS. ENSURE ALL FIXING POINTS ARE USED.
6. APPLY RYANFIRE HP-X INTO THE ANNULAR GAP BETWEEN THE PVC PIPE AND THE SL COLLAR, TO THE FULL DEPTH OF THE COLLAR.
7. CLEAN ANY EXCESS SEALANT WITH A DAMP CLOTH.



Pipe Diameter	SL Collar Diameter	Core Hole Diameter
Ø40mm	SL 55	Ø55mm
Ø50mm	SL 65	Ø62mm
Ø65mm	SL 80	Ø75mm
Ø82mm	SL 110	Ø117mm
Ø100mm	SL 125	Ø122mm

<b>Products:</b>	RYANFIRE SL COLLAR RYANFIRE MASTIC RYANFIRE HP-X
<b>Approvals:</b>	AS 1530.4:2014/AS 4072.1:2005
<b>BK:</b>	149 / 302
<b>Ref:</b>	22SFR00034 / 24SFR00060
<b>ID:</b>	B - D / C - E
<b>Scenario:</b>	Penetration seal to PVC pipes with oversized SL collars
<b>Services:</b>	Up to Ø100mm PVC pipes
<b>Construction:</b>	120mm concrete floor
<b>Fire Resistance:</b>	Ø40mm : -/120/120 Ø50mm : -/120/120 Ø65mm : -/120/120 Ø80mm : -/120/120 Ø100mm : -/120/120

Web based drawings are for example only. Fire performance of any system is dependant on, but not limited to, size of opening, substrate, if penetrations are passing through, type, size and number. Please refer to Ryanfire technical department for detailed and specific fire performance information.



RYANFIRE Technical Support:  
info@ryanfire.co.nz - Tel 09 443 0362

Drawing Title  
**Oversized SL Collar to PVC pipes  
120mm Concrete floors**

Scale <b>NTS</b>	Date <b>April 2025</b>
Drawing Number <b>V22.42</b>	Rev <b>4.0</b>

**All errors and omissions excepted.** The information contained within this drawing is believed to be correct on the date of publication, and is based upon tested and certified solutions. The policy of **Ryanfire Products** is one of constant improvement. Installers must ensure that they are following the latest published drawings, test evidence and instructions. Whilst **Ryanfire Products** will endeavour to keep its publications up to date, the accuracy of the information contained within this drawing may be affected by pertinent changes in the law or regulatory requirements and alterations or amendments to the specification of **the manufactured** products. Terms and conditions of sale apply.

Ryanfire Products owns and has copyright to these drawings. They are to be used only for the purpose for which they were intended and supplied and are not to be sold, transferred or made available for use by a third party. Any misuse of these drawings will result in legal proceedings.