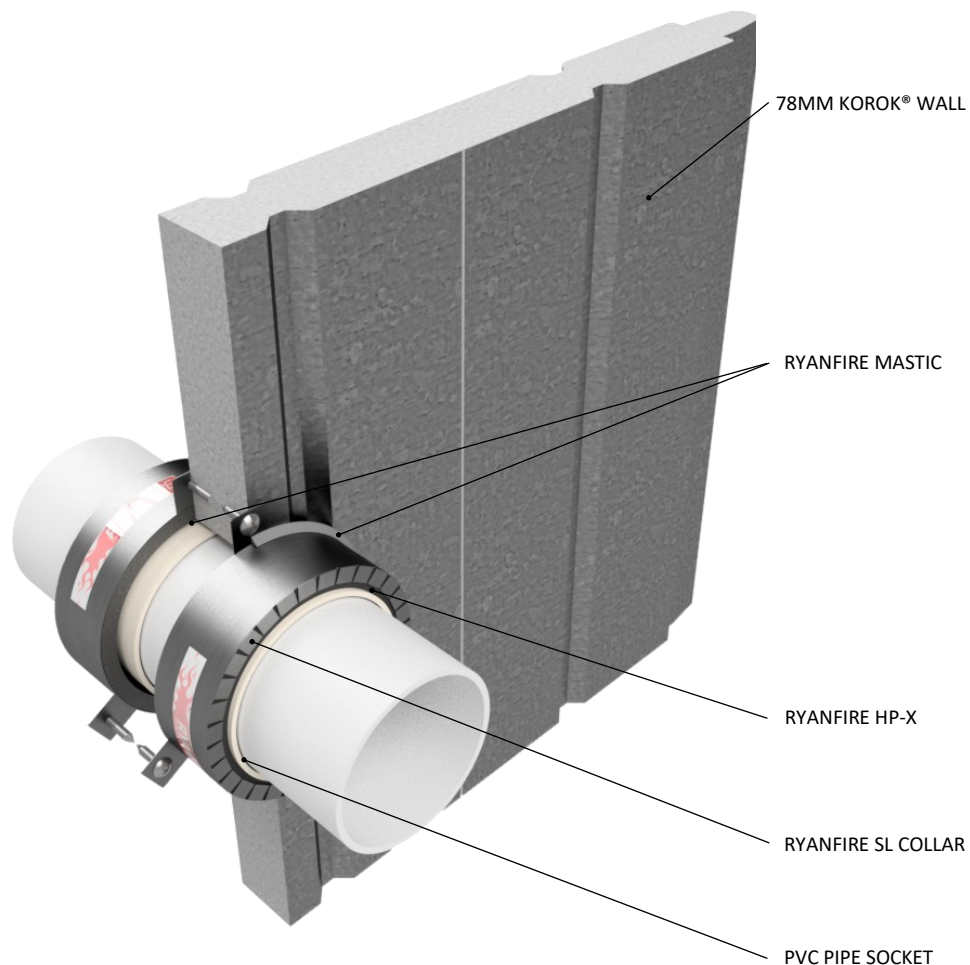


INSTALLATION INSTRUCTIONS

1. ENSURE THE APERTURE IS CLEAN AND FREE OF DUST AND DEBRIS.
2. SELECT THE CORRECT SIZE RYANFIRE SL COLLAR TO FIT AROUND THE PVC PIPE.
3. APPLY RYANFIRE MASTIC INTO THE ANNULAR GAP BETWEEN THE PVC PIPE AND THE KOROK® WALL.
4. SECURE THE SL COLLAR AROUND THE PIPE AND SLIDE IT UP UNTIL IT IS FLUSH WITH THE SURFACE OF THE WALL. FIX THE COLLAR INTO PLACE USING 12G X 30MM TEK SCREWS.
5. APPLY RYANFIRE HP-X INTO THE ANNULAR GAP BETWEEN THE SOCKET AND THE SL COLLAR, TO THE FULL DEPTH OF THE COLLAR.
6. APPLY A NOMINAL 5MM BEAD OF RYANFIRE MASTIC AROUND THE JOINT BETWEEN THE SL COLLAR AND THE KOROK® WALL.
7. REPEAT THIS PROCESS ON THE OPPOSITE SIDE OF THE WALL.



Products: RYANFIRE SL COLLAR
RYANFIRE HP-X
RYANFIRE MASTIC
Approvals: AS 1530.4:2014/AS 4072.1:2005
BK: 184
Ref: 22SFR00073
ID: F, G

Scenario: Penetration seal to PVC pipes + socket joint

Services: Up to Ø100mm PVC pipes + socket joint

Construction: 78mm KOROK® wall

Fire Resistance: Ø20mm : -/120/120
Ø100mm : -/120/60

Web based drawings are for example only. Fire performance of any system is dependant on, but not limited to size of opening, substrate, if penetrations are passing through, type, size and number. Please refer to Ryanfire technical department for detailed and specific fire performance information.



RYANFIRE Technical Support:
info@ryanfire.co.nz - Tel 09 443 0362

Drawing Title
SL Collar to PVC socket
78mm KOROK® wall

Scale	NTS	Date	February 2026
-------	-----	------	---------------

Drawing Number	V21.31	Rev	4.0
----------------	--------	-----	-----

All errors and omissions excepted. The information contained within this drawing is believed to be correct on the date of publication, and is based upon tested and certified solutions. The policy of **Ryanfire Products** is one of constant improvement. Installers must ensure that they are following the latest published drawings, test evidence and instructions. Whilst **Ryanfire Products** will endeavour to keep its publications up to date, the accuracy of the information contained within this drawing may be affected by pertinent changes in the law or regulatory requirements and alterations or amendments to the specification of the **manufactured** products. Terms and conditions of sale apply.

Ryanfire Products owns and has copyright to these drawings. They are to be used only for the purpose for which they were intended and supplied and are not to be sold, transferred or made available for use by a third party. Any misuse of these drawings will result in legal proceedings.