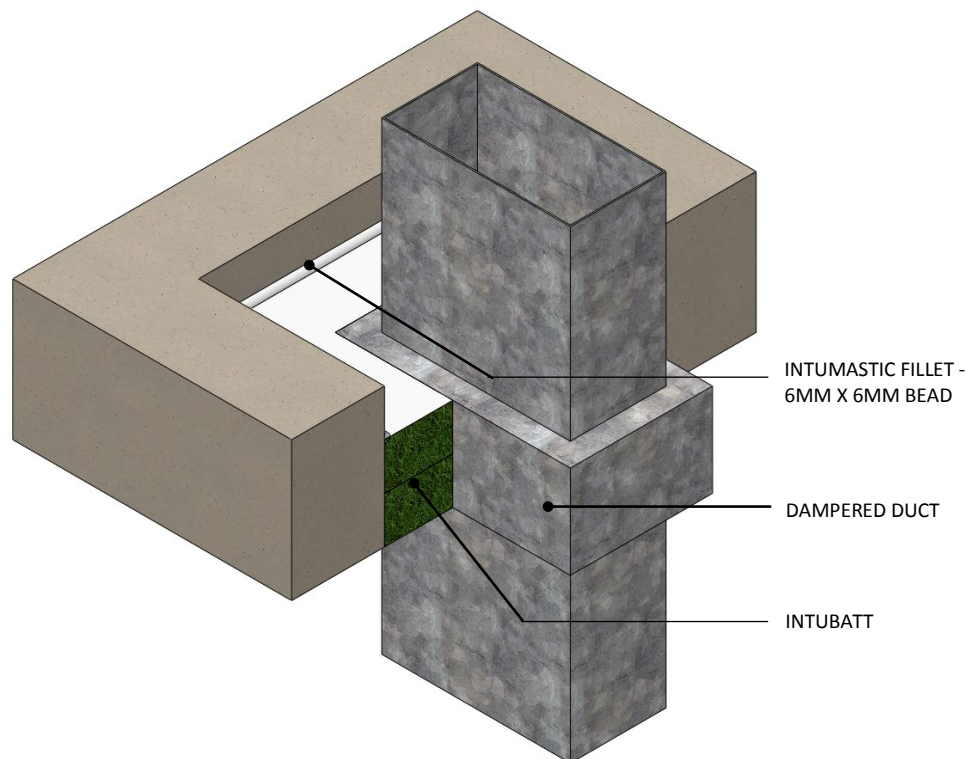


INSTALLATION INSTRUCTIONS

1. ENSURE THE APERTURE IS CLEAN AND FREE OF DEBRIS AND LOOSE CEMENT. REMOVE DUST FROM SURFACES REQUIRING INSTALLATION.
2. CUT THE INTUBATT TO THE REQUIRED SIZE AND SHAPE TO FORM TWO LAYERS. ENSURE THE INTUBATT WILL BE A TIGHT FIT TO ALL EDGES OF THE APERTURE.
3. CUT THE INTUBATT TO TIGHTLY FIT AROUND THE PIPE .
4. CUT THE INTUBATT ACROSS THE SHORTEST DIMENSION INCORPORATING THE MIDPOINT OF THE PENETRATION, TO ENABLE THE INTUBATT TO BE FITTED INTO THE APERTURE.
5. APPLY INTUMASTIC BRUSH GRADE TO ALL EDGES OF THE INTUBATT, ENSURING THAT AN EVEN COVERAGE IS ACHIEVED OVER THE ENTIRE EXPOSED THICKNESS OF THE INTUBATT. THIS SHOULD INCLUDE THE OUTER EDGES OF THE INTUBATT AND THE CUT ACROSS TO ALLOW INSTALLATION INTO THE APERTURE.
6. INSERT THE INTUBATT IN TO THE OPENING.
7. APPLY AN INTUMASTIC BEAD APPROXIMATELY 6MM X 6MM TO THE PERIMETER AND (REQUIRED TOP SIDE ONLY), WHERE THE INTUBATT MEETS THE APERTURE AND PENETRATION. ENSURE THAT ALL GAPS BETWEEN THE INTUBATT AND THE SURROUNDING EDGES ARE FULLY FILLED.
8. REPAIR ANY DAMAGES TO THE COATING WHICH MAY HAVE OCCURRED DURING INSTALLATION USING BRUSH OR SPRAYING APPLICATION OF INTUMASTIC.



Please note:
Ryanfire Products Ltd owns and has copyright in these drawings. They are to be used only for the purpose for which they were intended and supplied and are not to be sold, transferred or made available for use by a third party.

Any misuse of these drawings will result in legal proceedings.

All errors and omissions excepted - the information contained within this drawing is believed to be correct on the date of publication, and is based upon tested and certified solutions. The policy of **RyanFire Products Ltd** is one of constant improvement. Installers must therefore ensure that they are following the latest published drawings, test evidence and instructions. Whilst **RyanFire Products Ltd** will endeavour to keep its publications up to date, the accuracy of the information contained within this drawing may be affected by pertinent changes in the law or regulatory requirements and alterations or amendments to the specification of the **manufactured** products. Terms and conditions of sale apply.

RYANFIRE Technical Support: info@ryanfire.co.nz - Tel: 09 443 0362

Notes

Products: INTUBATT
Approval: AS 1530.4/AS 4072.1
BK: 1
Ref: 35084000
ID: 57
Scenario: Penetration seal to dampered duct.
Construction: 150mm thick concrete floor.
Fire Integrity: 120 minutes.

Web based drawings are for example only, fire performance of any system is dependant on, but not limited to size of opening, substrate, if penetrations are passing through, type, size and number. Please refer to Ryanfire technical department for detailed and specific fire performance information.



Client

Job Title

Drawing Title

Dampened Duct Floor Penetration

| | | |
|----------------|-----------|-----|
| Scale | Date | |
| NTS | July 2019 | |
| Sheet Size | Drawn By | |
| A3 | | |
| Drawing Number | Rev | |
| V57 | | 2.0 |