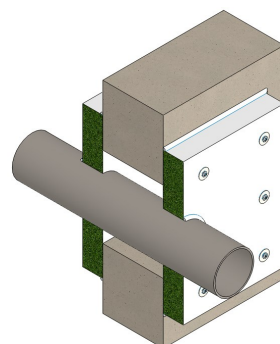
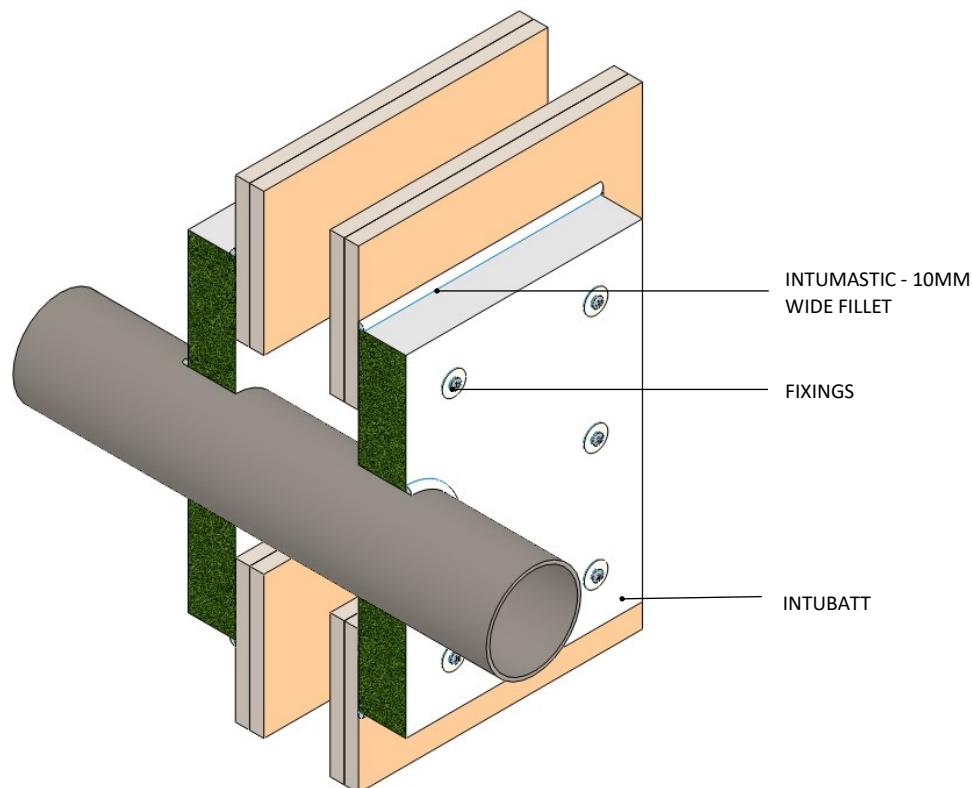


INSTALLATION INSTRUCTIONS

1. ENSURE APERTURE IS CLEAN AND FREE OF DEBRIS. REMOVE DUST FROM SURFACES REQUIRING INSTALLATION.
2. CUT INTUBATT TO THE REQUIRED SIZE AND SHAPE ENSURING THE INTUBATT OVERLAPS THE PLASTERBOARD 100MM AROUND THE OPENING.
3. CUT THE INTUBATT TO FIT TIGHTLY AROUND THE PIPE.
4. CUT THE INTUBATT ACROSS THE SHORTEST DIMENSION INCORPORATING THE MIDPOINT OF THE PENETRATION TO ENABLE THE INTUBATT TO BE FITTED ONTO THE PLASTERBOARD.
5. APPLY INTUMASTIC TO THE PLASTERBOARD WHERE THE INTUBATT IS TO BE FITTED.
6. APPLY INTUMASTIC BRUSH GRADE TO ALL EDGES OF THE INTUBATT ENSURING THAT AN EVEN COVERAGE IS ACHIEVED OVER THE ENTIRE EXPOSED THICKNESS OF THE INTUBATT. THIS SHOULD INCLUDE THE OUTER EDGES OF THE INTUBATT AND THE CUT ACROSS TO ALLOW INSTALLATION INTO THE APERTURE.
7. FIT THE INTUBATT OVER THE OPENING.
8. FIX THE INTUBATT TO THE PLASTERBOARD USING MINIMUM 75MM LONG STEEL SCREWS AND 25MM DIAMETER STEEL WASHERS. FIXINGS SHOULD NOT EXCEED 50MM FROM ANY EDGE AND NOT EXCEED 200MM CENTRES.
9. APPLY A FILLET OF INTUMASTIC TO THE PERIMETER OF THE INTUBATT AND PIPE TO APPROXIMATELY 10MM WIDE. ENSURE THAT ALL GAPS BETWEEN THE INTUBATT AND THE SURROUNDING EDGES ARE FULLY FILLED.
10. REPAIR ANY DAMAGE THAT MAY HAVE OCCURRED TO THE COATING DURING INSTALLATION USING INTUMASTIC.
11. REPEAT THE ABOVE TO THE OPPOSITE SIDE OF WALL.



AS 1530.4 Clause 10.12.2-C

Results obtained from framed wall systems may be applied to the performance of a system in concrete, masonry, or solid gypsum block of greater or equal thickness to that of the tested prototype. The reverse does not apply.

Please note:
Ryanfire Products Ltd owns and has copyright in these drawings. They are to be used only for the purpose for which they were intended and supplied and are not to be sold, transferred or made available for use by a third party.

Any misuse of these drawings will result in legal proceedings.

All errors and omissions excepted - the information contained within this drawing is believed to be correct on the date of publication, and is based upon tested and certified solutions. The policy of **RyanFire Products Ltd** is one of constant improvement. Installers must therefore ensure that they are following the latest published drawings, test evidence and instructions. Whilst **RyanFire Products Ltd** will endeavour to keep its publications up to date, the accuracy of the information contained within this drawing may be affected by pertinent changes in the law or regulatory requirements and alterations or amendments to the specification of the **manufactured** products. Terms and conditions of sale apply.

RYANFIRE Technical Support: info@ryanfire.co.nz Tel 09 443 0362

Products: INTUBATT
INTUMASTIC
Approval: AS 1530.4/AS 4072.1
BK: 1 / 85
Ref: 35084000 / FAS 190235
ID: 5 / V26, V27

Scenario: Penetration seal to non-combustible pipes

Services: Copper, ferrous and brass pipes

Construction: Fire rated plasterboard / Masonry wall

Void Size: Up to 1000mm x 400mm

Fire Integrity: 240 minutes

Fire Insulation: 60 minutes (max steel only)

Fire ratings may change depending on non-combustible pipe material. Please contact Ryanfire for details.

Web based drawings are for example only. Fire performance of any system is dependant on, but not limited to, size of opening, substrate, if penetrations are passing through, type, size and number. Please refer to Ryanfire technical department for detailed and specific fire performance information.



Client

Job Title

Drawing Title

Metal Pipe Penetration Pattress Fit - FR Plasterboard/Masonry Wall

Scale

NTS

Date

November 2020

Sheet Size

A3

Drawn By

Drawing Number

V6

Rev

3.0