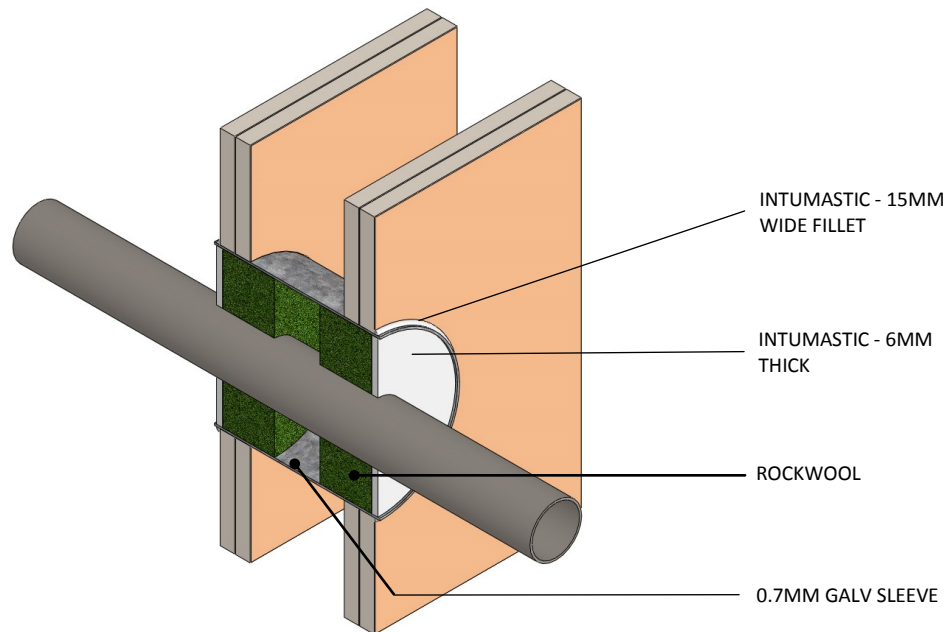


INSTALLATION INSTRUCTIONS

1. ENSURE THE APERTURE IS CLEAN AND FREE OF DEBRIS. REMOVE DUST FROM SURFACES REQUIRING INSTALLATION.
2. CUT 50MM THICK 60KG/M3 DENSITY ROCKWOOL TO TIGHTLY COMPRESS BETWEEN PIPE AND GALV. SLEEVE.
3. POSITION THE ROCKWOOL TO FORM A MINIMUM 6MM RECESS FROM THE SURFACE OF THE WALL.
4. APPLY 6MM THICKNESS OF INTUMASTIC TO THE RECESS AROUND THE PIPE.
5. REPEAT THE ABOVE TO THE OPPOSITE SIDE OF WALL.

NOTE: OUTSIDE OF THE FIRE STOP WHERE THE GALV. SLEEVE MEETS THE FIRE RATED PLASTERBOARD MUST PERFORM TO THE REQUIRED FIRE RATING. IF THERE ARE GAPS LESS THAN 10MM, THE AREAS CAN BE FILLED WITH INTUMASTIC.



Notes

Products: INTUMASTIC, ROCKWOOL
Approval: AS 1530.4/AS 4072.1
BK: 1
Ref: 35084000
ID: 6
Scenario: Penetration seal to steel pipe.
Void: Up to 25mm annular.
Construction: Fire rated plasterboard wall.
Fire Integrity: 120 minutes.
Insulation: 90 minutes .
Services: Up to 60mm dia. steel pipe.

Web based drawings are for example only. Fire performance of any system is dependant on, but not limited to, size of opening, substrate, if penetrations are passing through, type, size and number. Please refer to Ryanfire technical department for detailed and specific fire



Client

Job Title

Drawing Title

Metal Pipe Penetration to Galv. Sleeve - FR Plasterboard Wall

Scale	Date	
NTS	June 2019	
Sheet Size	Drawn By	
A3		
Drawing Number	Rev	
V4		2.0

Please note:
 Ryanfire Products Ltd owns and has copyright in these drawings. They are to be used only for the purpose for which they were intended and supplied and are not to be sold, transferred or made available for use by a third party.

Any misuse of these drawings will result in legal proceedings.

All errors and omissions excepted - the Information contained within this drawing is believed to be correct on the date of publication, and is based upon tested and certified solutions. The policy of RyanFire Products Ltd is one of constant improvement. Installers must therefore ensure that they are following the latest published drawings, test evidence and instructions. Whilst RyanFire Products Ltd will endeavour to keep its publications up to date, the accuracy of the information contained within this drawing may be affected by pertinent changes in the law or regulatory requirements and alterations or amendments to the specification of the manufactured products. Terms and conditions of sale apply.

RYANFIRE Technical Support: info@ryanfire.co.nz - Tel: 09 443 0362