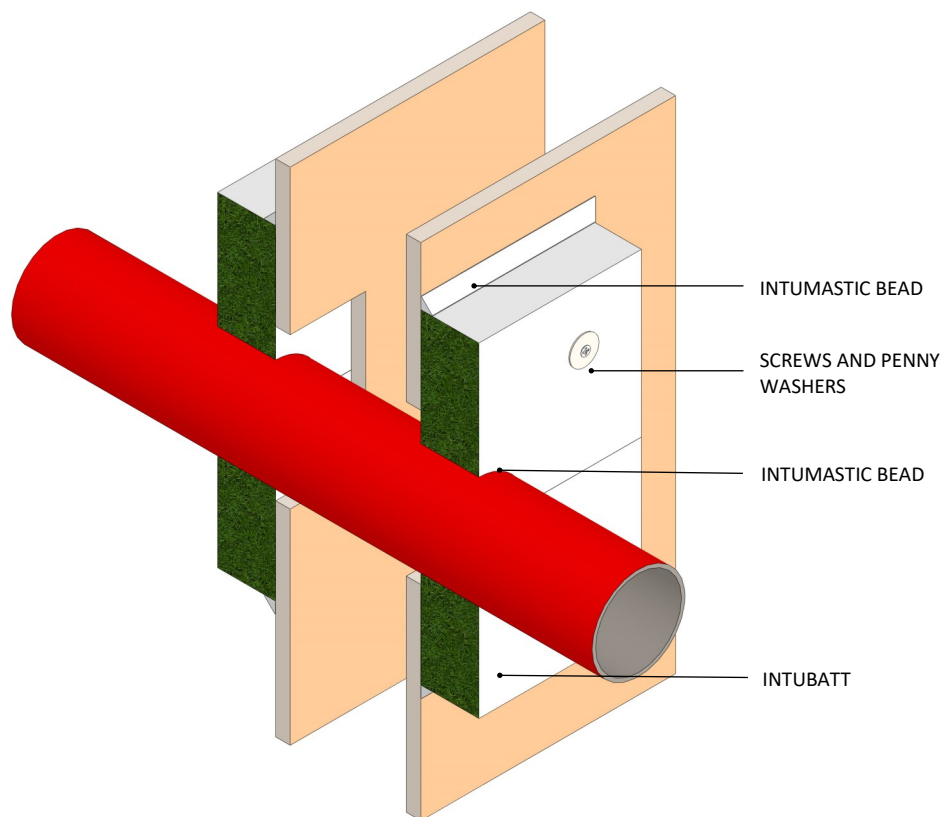


## INSTALLATION INSTRUCTIONS

1. ENSURE THE APERTURE IS CLEAN AND FREE OF DEBRIS. REMOVE DUST FROM SURFACES REQUIRING INSTALLATION.
2. CUT INTUBATT TO THE REQUIRED SIZE AND SHAPE ENSURING THE INTUBATT WILL OVERLAP THE PLASTERBOARD 75MM AROUND THE OPENING.
3. CUT THE INTUBATT TO FIT TIGHTLY AROUND THE PENETRATION.
4. CUT THE INTUBATT ACROSS THE SHORTEST DIMENSION INCORPORATING THE MIDPOINT OF THE PENETRATION TO ENABLE THE INTUBATT TO BE FITTED ONTO THE PLASTERBOARD.
5. APPLY INTUMASTIC TO PLASTERBOARD WHERE THE INTUBATT IS TO BE FITTED
6. COAT ALL CUT INTUBATT EDGES WITH INTUMASTIC BRUSH GRADE
7. FIRMLY PRESS INTUBATT TO PLASTERBOARD TO ENSURE BOND.
8. FIX THE INTUBATT TO THE PLASTERBOARD USING MINIMUM 75MM LONG STEEL SCREWS AND 25MM DIAMETER STEEL WASHERS. FIXINGS SHOULD NOT EXCEED 50MM FROM ANY EDGE AND NOT EXCEED 200MM CENTRES.
9. APPLY A BEAD OF INTUMASTIC TO THE OUTSIDE OF THE INTUBATT WHERE IT MEETS THE PLASTERBOARD ENSURING THAT ALL GAPS BETWEEN THE INTUBATT AND SURROUNDING EDGES ARE FULLY SEALED.
10. COAT ALL EXPOSED INTUBATT FIBROUS EDGES WITH INTUMASTIC BRUSH GRADE.
11. REPAIR ANY DAMAGES TO THE COATING WHICH MAY HAVE OCCURRED DURING INSTALLATION AND OVERCOAT EXPOSED FIXINGS AND EXPOSED MINERAL FIBRE USING INTUMASTIC BRUSH GRADE.
12. REPEAT THE ABOVE TO THE OPPOSITE SIDE OF WALL.



Please note:  
Ryanfire Products Ltd owns and has copyright in these drawings. They are to be used only for the purpose for which they were intended and supplied and are not to be sold, transferred or made available for use by a third party.

Any misuse of these drawings will result in legal proceedings.

**All errors and omissions excepted** - the information contained within this drawing is believed to be correct on the date of publication, and is based upon tested and certified solutions. The policy of **RyanFire Products Ltd** is one of constant improvement. Installers must therefore ensure that they are following the latest published drawings, test evidence and instructions. Whilst **RyanFire Products Ltd** will endeavour to keep its publications up to date, the accuracy of the information contained within this drawing may be affected by pertinent changes in the law or regulatory requirements and alterations or amendments to the specification of the **manufactured** products. Terms and conditions of sale apply.

RYANFIRE Technical Support: info@ryanfire.co.nz- Tel 09 443 0362

<b>Products:</b>	INTUBATT INTUMASTIC
<b>Approvals:</b>	AS 1540.4/AS 4072.1
<b>BK:</b>	1 / 85
<b>Ref:</b>	35084000 / FAS190235
<b>ID:</b>	1 / V26, V27
<b>Scenario:</b>	Metal pipe passing through fire rated plasterboard wall
<b>Penetrations:</b>	Copper, brass, ferrous pipes
<b>Construction:</b>	13mm Fire rated plasterboard wall
<b>Fire Integrity:</b>	60 minutes max
<b>Fire Insulation:</b>	30 minutes max (up to Ø87mm pipe)

*Fire ratings may change depending on non-combustible pipe material. Please contact Ryanfire for details.*

Web based drawings are for example only. Fire performance of any system is dependant on, but not limited to, size of opening, substrate, if penetrations are passing through, type, size and number. Please refer to Ryanfire technical department for detailed and specific fire performance information.



Client

Job Title

Drawing Title

**Pattress Intubatt to Metal Pipe**

Scale	NTS		Date	November 2020	
Sheet Size	A3		Drawn By		
Drawing Number	V2			Rev	3.0