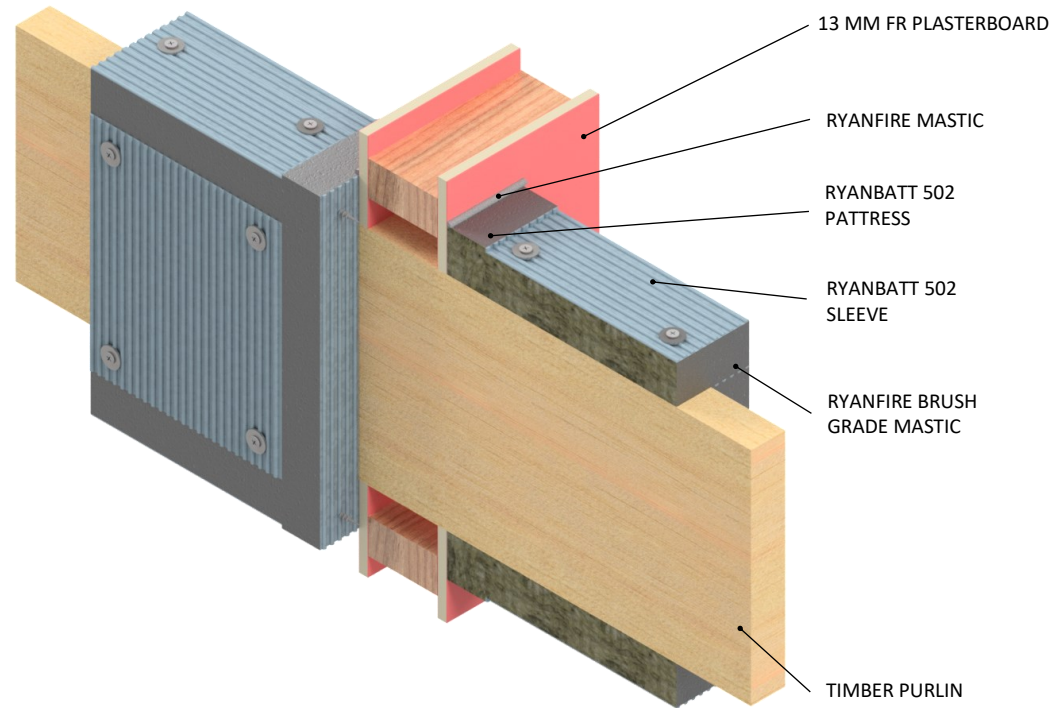


INSTALLATION INSTRUCTIONS

1. ENSURE THE APERTURE IS CLEAN AND FREE OF DUST AND DEBRIS.
2. CUT THE RYANBATT 502 TO THE REQUIRED SIZE AND SHAPE ENSURING THE RYANBATT 502 WILL OVERLAP THE PLASTERBOARD 50MM AROUND THE OPENING.
3. CUT THE RYANBATT 502 TO FIT TIGHTLY AROUND THE TIMBER.
4. APPLY RYANFIRE MASTIC TO THE PLASTERBOARD WHERE THE RYANBATT IS TO BE FITTED.
5. FIRMLY PRESS THE RYANBATT AGAINST THE PLASTERBOARD AROUND THE TIMBER PURLIN TO ENSURE AN ADEQUATE BOND.
6. FIX THE RYANBATT 502 TO THE PLASTERBOARD USING MINIMUM 75MM STEEL SCREWS AND Ø25MM STEEL WASHERS. FIXINGS SHOULD NOT EXCEED 30MM FROM THE EDGE OF THE RYANBATT AND BE POSITIONED AT 200MM CENTRES.
7. CUT THE RYANBATT 502 TO FORM A SLEEVE AROUND THE TIMBER PURLIN EXTENDING 250MM. APPLY RYANFIRE MASTIC TO THE PURLIN AND TO ANY JOINTS AND GAPS.
8. FIX RYANBATT SLEEVE TO THE PURLIN USING 75MM STEEL SCREWS AND Ø25MM STEEL WASHERS.
9. ENSURE A MINIMUM OF ONE FIXING PER CORNER ON THE VERTICAL SECTION OF THE SLEEVE AND ONE FIXING AT EACH END ON THE HORIZONTAL SECTIONS OF THE SLEEVE.
10. APPLY RYANFIRE BRUSH GRADE MASTIC TO ANY CUT AND EXPOSED EDGES OF THE RYANBATT.
11. APPLY RYANFIRE MASTIC TO ANY JUNCTIONS BETWEEN THE PLASTERBOARD WALL, TIMBER AND RYANBATT
12. REPEAT THIS PROCESS ON THE OPPOSITE SIDE OF THE WALL.



Products:	RYANBATT 502 RYANFIRE MASTIC
Approval:	AS 1530.4:2014/AS 4072.1:2005
BK:	54
Ref:	PF 19018
ID:	1
Scenario:	Penetration seal to timber purlin / beam
Penetration:	290mm x 45mm timber purlin
Construction:	90mm FR plasterboard / Masonry wall
Fire Integrity:	60 minutes
Fire Insulation:	60 minutes

Web based drawings are for example only. Fire performance of any system is dependant on, but not limited to size of opening, substrate, if penetrations are passing through, type, size and number. Please refer to Ryanfire technical department for detailed and specific fire performance information.



RYANFIRE Technical Support:
info@ryanfire.co.nz - Tel 09 443 0362

Drawing Title
Ryanbatt 502 to timber purlin
90mm plasterboard wall

Scale NTS	Date April 2025
Drawing Number V64	Rev 6.0

All errors and omissions excepted. The information contained within this drawing is believed to be correct on the date of publication, and is based upon tested and certified solutions. The policy of **Ryanfire Products** is one of constant improvement. Installers must ensure that they are following the latest published drawings, test evidence and instructions. Whilst **Ryanfire Products** will endeavour to keep its publications up to date, the accuracy of the information contained within this drawing may be affected by pertinent changes in the law or regulatory requirements and alterations or amendments to the specification of **the manufactured** products. Terms and conditions of sale apply.

Ryanfire Products owns and has copyright to these drawings. They are to be used only for the purpose for which they were intended and supplied and are not to be sold, transferred or made available for use by a third party. Any misuse of these drawings will result in legal proceedings.