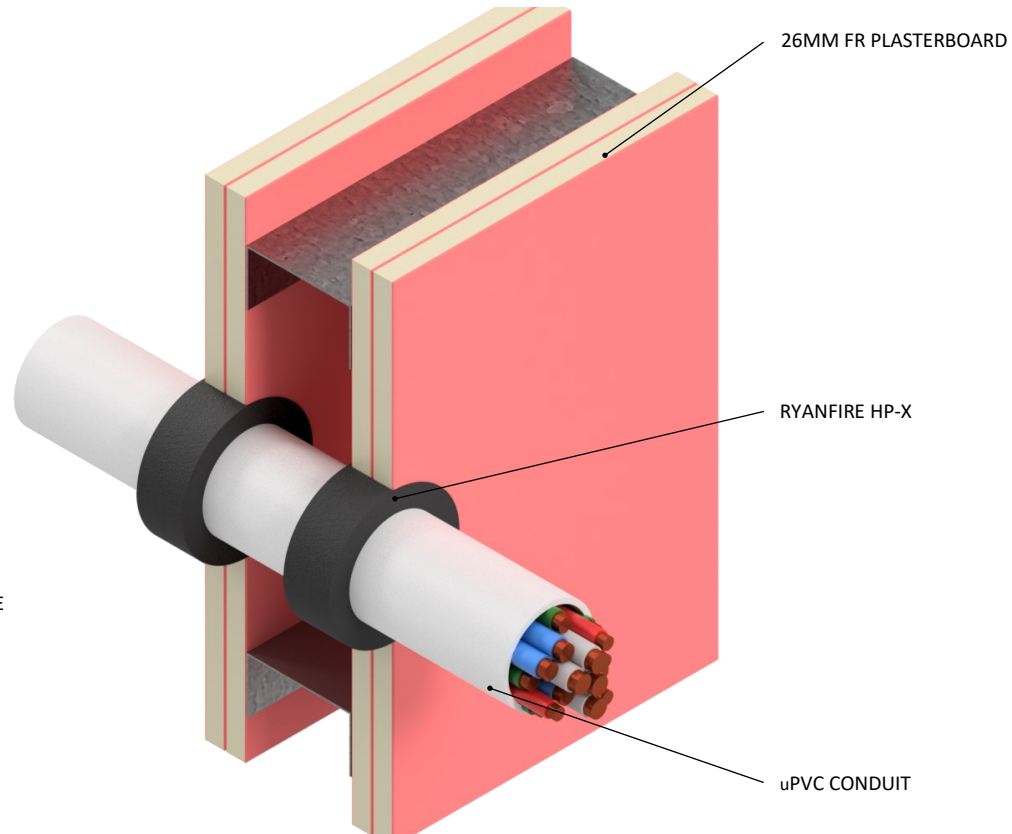


**INSTALLATION INSTRUCTIONS**

1. ENSURE THE APERTURE IS CLEAN AND FREE OF DUST AND DEBRIS.
2. APPLY RYANFIRE HP-X INTO THE APERTURE AROUND THE CONDUIT TO THE FULL DEPTH OF THE PLASTERBOARD (26MM)
3. REMOVE ANY EXCESS HP-X USING A DAMP CLOTH.
4. REPEAT THIS PROCESS ON THE OPPOSITE SIDE OF THE WALL.



<b>Products:</b>	<b>RYANFIRE HP-X</b>
<b>Approvals:</b>	<b>AS 1530.4/AS 4072.1</b>
<b>BK:</b>	<b>15 / 58</b>
<b>Ref:</b>	<b>PF 20094 / FRT 190080.2</b>
<b>ID:</b>	<b>C, D / K</b>
<b>Scenario:</b>	Penetration seal to uPVC conduit
<b>Services:</b>	Up to Ø50mm uPVC cable conduit with mixed cable bundle : TPS, Fibre Optic, CAT6, Fire Alarm
<b>Construction:</b>	116mm FR plasterboard / Masonry wall
<b>Annular:</b>	18-20mm
<b>Fire Integrity:</b>	120 minutes
<b>Fire Insulation:</b>	120 minutes

Web based drawings are for example only. Fire performance of any system is dependant on, but not limited to, size of opening, substrate, if penetrations are passing through, type, size and number. Please refer to Ryanfire technical department for detailed and specific fire performance information.



Client

Job Title

Drawing Title  
**Ryanfire HP-X to uPVC conduit  
 116mm plasterboard wall**

Scale	NTS	Date	August 2021
Sheet Size	A3	Drawn By	
Drawing Number	V33.6	Rev	2.0

**Please note:**  
 Ryanfire Products Ltd owns and has copyright in these drawings. They are to be used only for the purpose for which they were intended and supplied and are not to be sold, transferred or made available for use by a third party.  
 Any misuse of these drawings will result in legal proceedings.

**All errors and omissions excepted** - the Information contained within this drawing is believed to be correct on the date of publication, and is based upon tested and certified solutions. The policy of **RyanFire Products Ltd** is one of constant improvement. Installers must therefore ensure that they are following the latest published drawings, test evidence and instructions. Whilst **RyanFire Products Ltd** will endeavour to keep its publications up to date, the accuracy of the information contained within this drawing may be affected by pertinent changes in the law or regulatory requirements and alterations or amendments to the specification of the **manufactured** products. Terms and conditions of sale apply.

RYANFIRE Technical Support: info@ryanfire.co.nz- Tel 09 443 0362