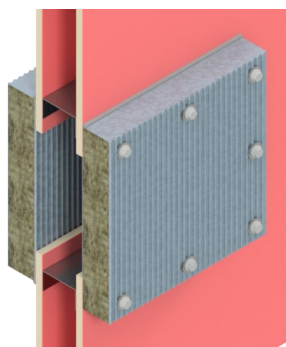
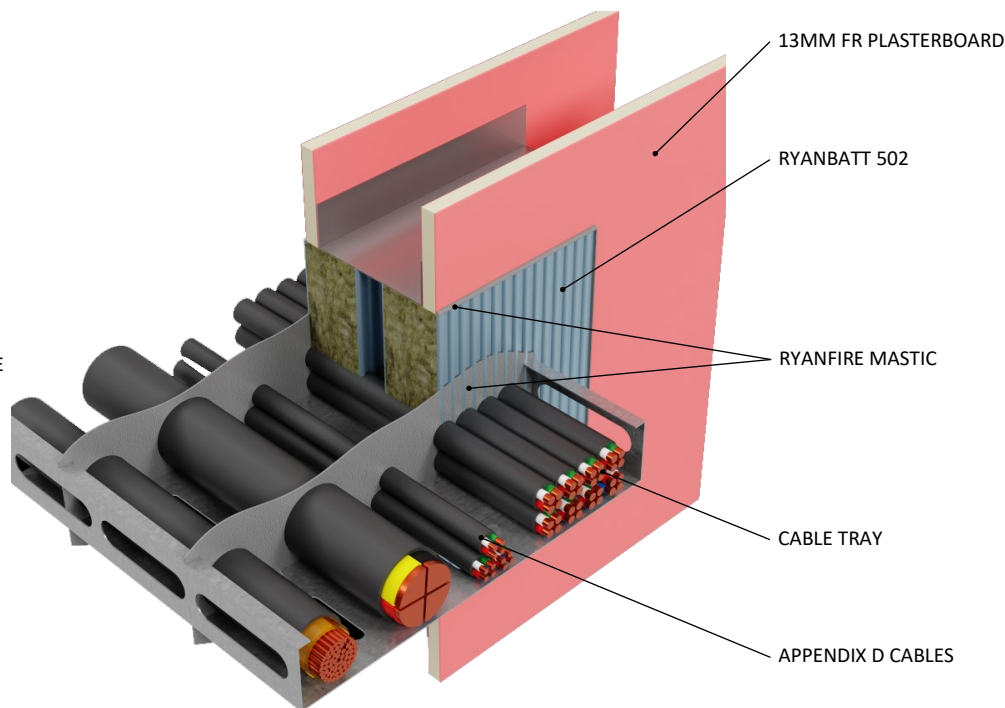


INSTALLATION INSTRUCTIONS

1. ENSURE THE APERTURE IS CLEAN AND FREE OF DUST AND DEBRIS
2. CUT THE RYANBATT 502 TO FIT TIGHTLY WITHIN THE APERTURE.
3. CUT THE RYANBATT 502 TO TIGHTLY FIT AROUND THE PROFILE OF THE CABLES AND THE CABLE TRAY. CUT THE RYANBATT AGAIN THROUGH THE SHORTEST DIMENSION (MIDPOINT OF THE CABLE TRAY) TO ENABLE THE BOARD TO BE FITTED INTO THE APERTURE.
4. APPLY RYANFIRE BRUSH GRADE MASTIC TO ALL EXPOSED & CUT EDGES OF THE RYANBATT AND THE INTERNAL EDGES OF THE APERTURE.
5. INSERT THE RYANBATT INTO THE OPENING.
6. APPLY 5MM RYANFIRE MASTIC TO ANY JOINTS BETWEEN THE CABLES, CABLE TRAY AND RYANBATT.
7. APPLY A 5MM BEAD OF RYANFIRE MASTIC TO THE PERIMETER OF THE RYANBATT AND TO ANY JOINTS AND GAPS.
8. REPAIR ANY DAMAGE THAT MAY HAVE OCCURRED TO THE COATING DURING INSTALLATION USING RYANFIRE MASTIC
9. REPEAT THIS PROCESS TO THE OPPOSITE SIDE OF THE WALL.



THIS SYSTEM MAY BE INSTALLED USING A PATTERN FIT CONFIGURATION.
PLEASE CONTACT RYANFIRE TECHNICAL SUPPORT
FOR MORE INFORMATION.

Products:	RYANBATT 502 RYANFIRE MASTIC RYANFIRE BRUSH GRADE MASTIC
Approval:	AS 1530.4:2014/AS 4072.1:2005
BK:	62 / 33
Ref:	PF 19010 / FAS 210123
ID:	14, 15 / Table 62 & 64
Scenario:	Penetration seal to AS1530.4 Appendix D cable bundles on a cable tray
Services:	D1 cable configuration D2 cable configuration
Construction:	90mm FR plasterboard / Masonry wall / KOROK® wall
Fire Integrity :	60 minutes
Fire Insulation:	60 minutes

Web based drawings are for example only. Fire performance of any system is dependant on, but not limited to size of opening, substrate, if penetrations are passing through, type, size and number. Please refer to Ryanfire technical department for detailed and specific fire performance information.



RYANFIRE Technical Support:
info@ryanfire.co.nz - Tel 09 443 0362

Drawing Title
**Ryanbatt 502 to cables & cable tray
plasterboard wall**

Scale	NTS	Date	April 2025
Drawing Number	V27.8	Rev	5.0

All errors and omissions excepted. The information contained within this drawing is believed to be correct on the date of publication, and is based upon tested and certified solutions. The policy of **Ryanfire Products** is one of constant improvement. Installers must ensure that they are following the latest published drawings, test evidence and instructions. Whilst **Ryanfire Products** will endeavour to keep its publications up to date, the accuracy of the information contained within this drawing may be affected by pertinent changes in the law or regulatory requirements and alterations or amendments to the specification of the **manufactured** products. Terms and conditions of sale apply.

Ryanfire Products owns and has copyright to these drawings. They are to be used only for the purpose for which they were intended and supplied and are not to be sold, transferred or made available for use by a third party. Any misuse of these drawings will result in legal proceedings.