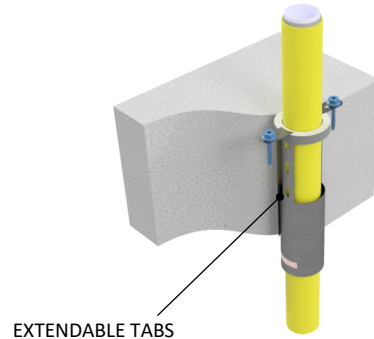
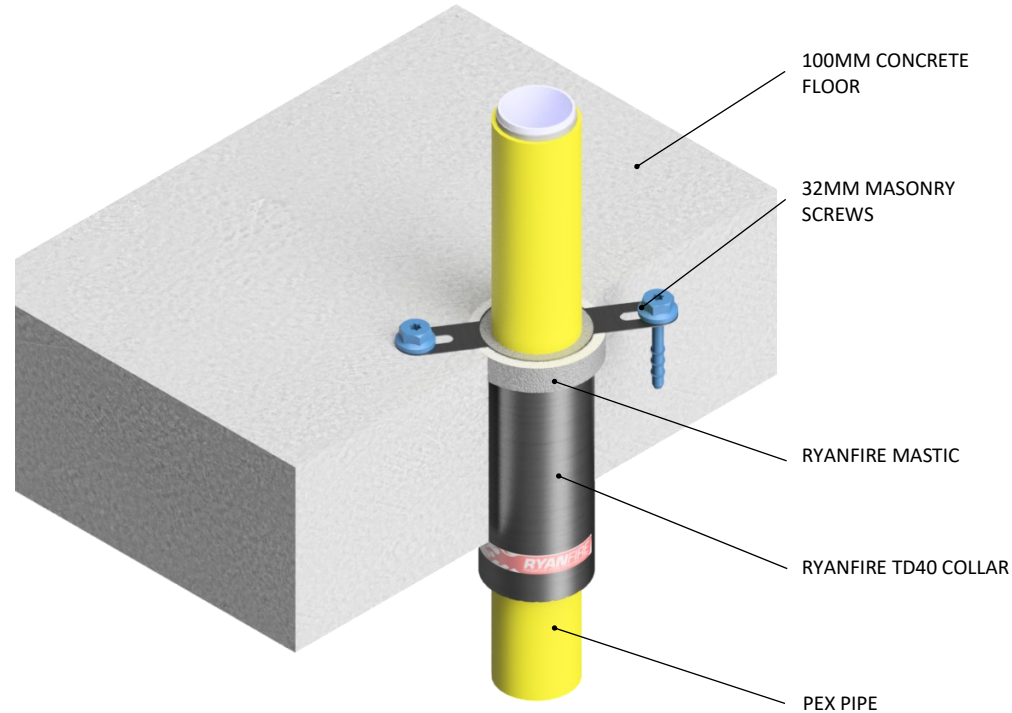


INSTALLATION INSTRUCTIONS

1. ENSURE THE APERTURE IS CLEAN AND FREE OF DEBRIS AND LOOSE CEMENT. REMOVE ALL DUST FROM SURFACES REQUIRING INSTALLATION.
2. SELECT THE TD40 COLLAR TO FIT AROUND THE PEX-AL PIPE.
3. SECURE THE TD COLLAR AROUND THE PEX-AL PIPE AND SLIDE THE COLLAR INTO THE APERTURE. ENSURE THE FIXING TABS ARE FLUSH WITH THE TOP OF THE CONCRETE FLOOR.
4. SECURE THE TD COLLAR IN POSITION USING 32MM MASONRY SCREWS THROUGH ALL FIXING TABS.
5. APPLY RYANFIRE MASTIC TO SMOKE SEAL BETWEEN THE CONCRETE FLOOR AND THE TD COLLAR.
6. APPLY RYANFIRE MASTIC TO SMOKE SEAL THE GAP BETWEEN THE PEX-AL PIPE AND THE COLLAR.



On the underside of the substrate, the TD Collar may be exposed no more than 80mm, or be recessed no more than 10mm.

TD COLLAR SIZE	CORE HOLE DIAMETER
TD 40	Ø65-Ø72mm

Products:	RYANFIRE TD COLLAR RYANFIRE MASTIC
Approvals:	AS 1530.4/AS 4072.1
BK:	67
Ref:	FRT 190287
ID:	D, H
Scenario:	Penetration seal to PEX-AL pipes
Services:	Up to Ø40mm PEX-AL gas pipes
Construction:	100mm Concrete floor
Fire Integrity:	120 minutes } Up to Ø16mm
Fire Insulation:	90 minutes }
Fire Integrity:	120 minutes } Up to Ø40mm
Fire Insulation:	0 minutes }

Web based drawings are for example only. Fire performance of any system is dependant on, but not limited to, size of opening, substrate, if penetrations are passing through, type, size and number. Please refer to Ryanfire technical department for detailed and specific fire performance information.



RYANFIRE Technical Support:
info@ryanfire.co.nz - Tel 09 443 0362

Drawing Title
TD Collar to PEX-AL gas pipes
100mm concrete floor

Scale	Date
NTS	July 2024

Drawing Number	Rev
V25.29	4.0

All errors and omissions excepted. The information contained within this drawing is believed to be correct on the date of publication, and is based upon tested and certified solutions. The policy of Ryanfire Products is one of constant improvement. Installers must ensure that they are following the latest published drawings, test evidence and instructions. Whilst Ryanfire Products will endeavour to keep its publications up to date, the accuracy of the information contained within this drawing may be affected by pertinent changes in the law or regulatory requirements and alterations or amendments to the specification of the manufactured products. Terms and conditions of sale apply.

Ryanfire Products owns and has copyright to these drawings. They are to be used only for the purpose for which they were intended and supplied and are not to be sold, transferred or made available for use by a third party. Any misuse of these drawings will result in legal proceedings.