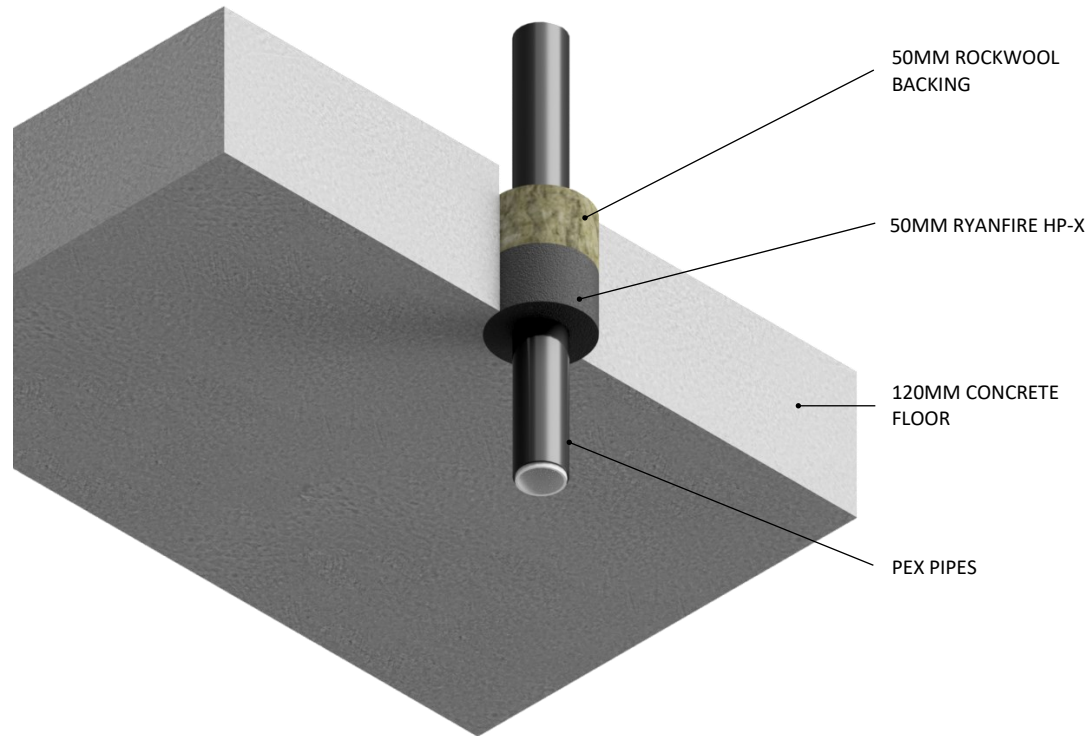


INSTALLATION INSTRUCTIONS

1. ENSURE THE APERTURE IS CLEAN AND FREE OF ANY DUST AND DEBRIS.
2. INSERT A 50MM DEEP ROCKWOOL BACKING INTO THE ANNULAR GAP AROUND THE PEX PIPE.
3. APPLY RYANFIRE HP-X TO A DEPTH OF 50MM INTO THE ANNULAR GAP BETWEEN THE PEX PIPE AND THE CONCRETE FLOOR. ENSURE THE GAP IS COMPLETELY FILLED UNTIL FLUSH WITH THE BOTTOM SURFACE OF THE FLOOR.
4. REMOVE ANY EXCESS HP-X WITH A DAMP CLOTH.



Products:	RYANFIRE HP-X
Approval:	AS 1530.4/4072.1
BK:	18
Ref:	PF 20097
ID:	A, B
Scenario:	Penetration seal to PEX pipes
Services:	Up to Ø32mm PEX pipes
Annular:	10-30mm
Construction:	120mm concrete floor
Fire Integrity:	120 minutes
Fire Insulation:	120 minutes
} Up to Ø16mm	
Fire Integrity:	120 minutes
Fire Insulation:	0 minutes
} Up to Ø32mm	

Web based drawings are for example only. Fire performance of any system is dependant on, but not limited to size of opening, substrate, if penetrations are passing through, type, size and number. Please refer to Ryanfire technical department for detailed and specific fire performance information.



Client

Job Title

Drawing Title

**Ryanfire HP-X to PEX pipes
120mm concrete floor**

Scale	NTS	Date	January 2021
Sheet Size	A3	Drawn By	
Drawing Number	V23.10	Rev	1.0

Please note:
Ryanfire Products Ltd owns and has copyright in these drawings. They are to be used only for the purpose for which they were intended and supplied and are not to be sold, transferred or made available for use by a third party.

Any misuse of these drawings will result in legal proceedings.

All errors and omissions excepted - the information contained within this drawing is believed to be correct on the date of publication, and is based upon tested and certified solutions. The policy of **RyanFire Products Ltd** is one of constant improvement. Installers must therefore ensure that they are following the latest published drawings, test evidence and instructions. Whilst **RyanFire Products Ltd** will endeavour to keep its publications up to date, the accuracy of the information contained within this drawing may be affected by pertinent changes in the law or regulatory requirements and alterations or amendments to the specification of the **manufactured** products. Terms and conditions of sale apply.

RYANFIRE Technical Support: info@ryanfire.co.nz - Tel 09 443 0362