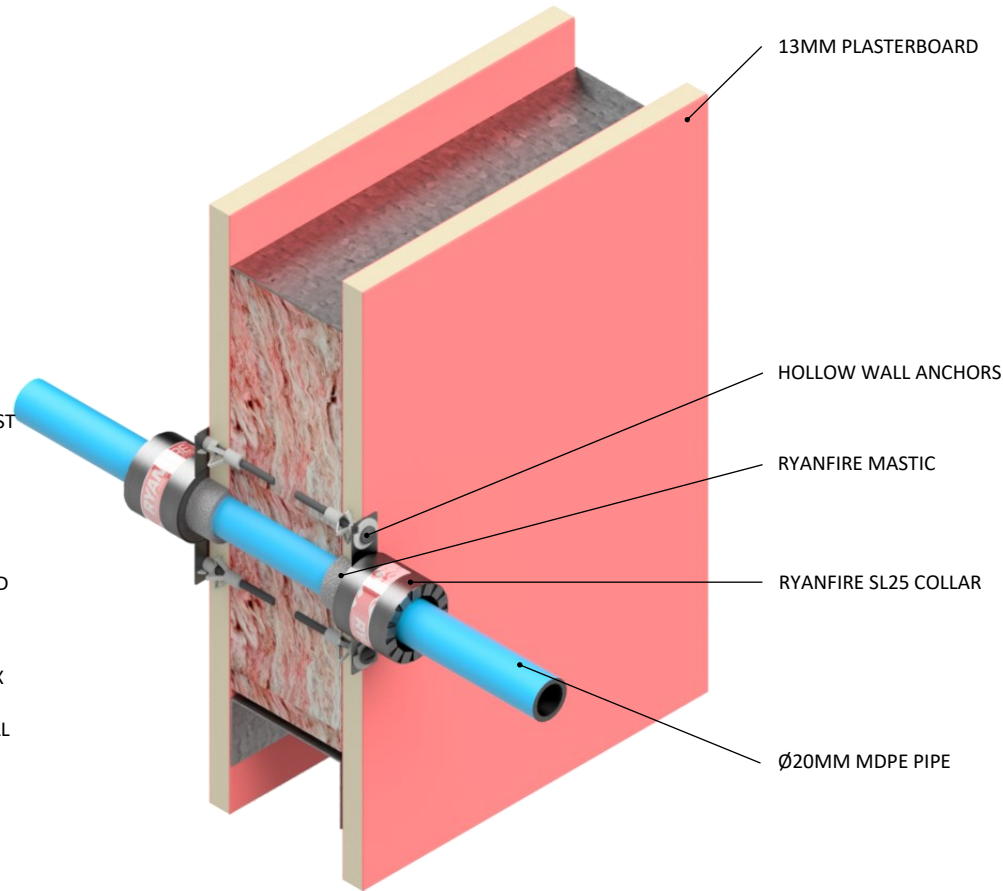


#### INSTALLATION INSTRUCTIONS

1. ENSURE THE APERTURE IS CLEAN AND FREE OF DUST AND DEBRIS.
2. APPLY RYANFIRE MASTIC TO SMOKE SEAL THE ANNULAR GAP BETWEEN THE MDPE PIPE AND THE PLASTERBOARD WALL.
3. SELECT THE RYANFIRE SL25 COLLAR TO FIT AROUND THE MDPE PIPE.
4. FIX THE SL COLLAR AROUND THE PIPE AND SLIDE IT UP TO THE FACE OF THE PLASTERBOARD WALL. FIX THE COLLAR THROUGH THE LUGS INTO THE PLASTERBOARD WALL USING 55MM HOLLOW WALL ANCHORS. ENSURE ALL FIXING POINTS ARE USED.
5. REPEAT THIS PROCESS ON THE OPPOSITE SIDE OF WALL.



Products:	RYANFIRE SL COLLAR RYANFIRE MASTIC
Approvals:	AS 1530.4/AS 4072.1
BK:	88
Ref:	PF 20067
ID:	J
Scenario:	Penetration seal to MDPE pipes
Services:	Ø20mm MDPE pipes
Construction:	90mm FR plasterboard wall / Masonry wall
Fire Integrity:	60 minutes
Fire Insulation:	60 minutes

Web based drawings are for example only, fire performance of any system is dependant on, but not limited to size of opening, substrate, if penetrations are passing through, type, size and number. Please refer to Ryanfire technical department for detailed and specific fire performance information.



RYANFIRE Technical Support:  
info@ryanfire.co.nz - Tel 09 443 0362

Drawing Title

**SL Collar to MDPE pipes  
90mm plasterboard wall**

Scale	NTS	Date	July 2025
Drawing Number	V21.20	Rev	3.0

**All errors and omissions excepted.** The information contained within this drawing is believed to be correct on the date of publication, and is based upon tested and certified solutions. The policy of **Ryanfire Products** is one of constant improvement. Installers must ensure that they are following the latest published drawings, test evidence and instructions. Whilst **Ryanfire Products** will endeavour to keep its publications up to date, the accuracy of the information contained within this drawing may be affected by pertinent changes in the law or regulatory requirements and alterations or amendments to the specification of **the manufactured** products. Terms and conditions of sale apply.

Ryanfire Products owns and has copyright to these drawings. They are to be used only for the purpose for which they were intended and supplied and are not to be sold, transferred or made available for use by a third party. Any misuse of these drawings will result in legal proceedings.