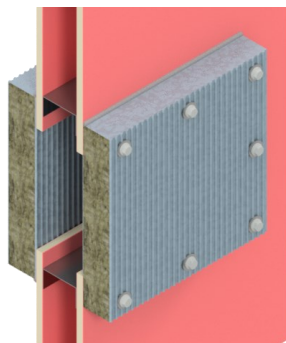
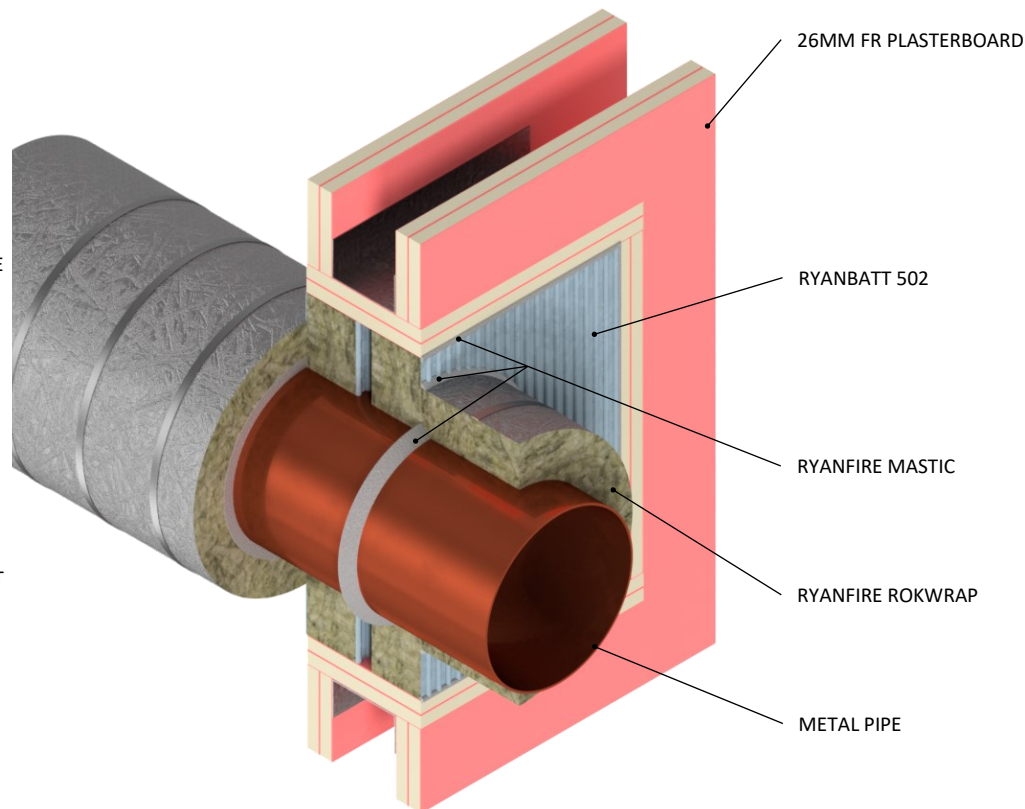


### INSTALLATION INSTRUCTIONS

1. ENSURE THE APERTURE IS CLEAN AND FREE OF DUST AND DEBRIS.
2. CUT THE RYANBATT 502 TO THE REQUIRED SIZE TO FIT TIGHTLY INTO THE FULLY LINED APERTURE.
3. CUT THE RYANBATT 502 TO FIT TIGHTLY AROUND THE METAL PIPE.
4. CUT THE RYANBATT ACROSS THE SHORTEST DIMENSION INCORPORATING THE MIDPOINT OF THE PENETRATION TO ENABLE THE BOARD TO BE FITTED INTO THE APERTURE.
5. APPLY RYANFIRE BRUSH GRADE MASTIC TO ALL THE INTERNAL EDGES OF THE APERTURE AND TO ALL THE EXPOSED & CUT EDGES OF THE RYANBATT.
6. INSERT THE RYANBATT 502 INTO THE OPENING TO SIT FLUSH WITH THE SURFACE OF THE WALL.
7. APPLY A BEAD OF RYANFIRE MASTIC TO THE JOINT BETWEEN THE RYANBATT AND THE METAL PIPE.
8. APPLY A 5MM BEAD OF RYANFIRE MASTIC TO THE PERIMETER OF THE RYANBATT AND TO ANY JOINTS AND GAPS.
9. WRAP 1 LAYER OF 1000MM WIDE RYANFIRE ROKWRAP AROUND THE PIPE WITH A 100MM OVERLAP. PRESS THE ROKWRAP UP AGAINST THE SURFACE OF THE RYANBATT.
10. SECURE THE ROKWRAP AROUND THE PIPE USING STEEL CABLE TIES AT NOMINAL 150MM CENTRES.
11. APPLY 30X30MM BEAD OF RYANFIRE MASTIC TO THE JOINT BETWEEN THE ROKWRAP AND THE RYANBATT.
12. SEAL ANY EXPOSED EDGES OF THE ROKWRAP USING FOIL TAPE.
13. REPEAT THIS PROCESS TO THE OPPOSITE SIDE OF THE WALL.



**THIS SYSTEM MAY BE INSTALLED USING A PATENT FIT CONFIGURATION.  
PLEASE CONTACT RYANFIRE TECHNICAL SUPPORT  
FOR MORE INFORMATION.**

**Products:** RYANBATT 502  
RYANFIRE MASTIC  
RYANFIRE ROKWRAP  
**Approval:** AS 1530.4:2014/AS 4072.1:2005  
**BK:** 23 / 151 / 33  
**Ref:** PF 21005/ 21SFR00020 / FAS210123  
**ID:** A, B, D / D / Table 42  
**Scenario:** Penetration seal to AS1530.4  
Appendix E non-combustible pipes  
**Services:** Up to Ø300mm metal pipes  
**Construction:** 90mm / 116mm FR plasterboard /  
Masonry wall / KOROK® wall

#### Fire Resistance:

Ø32mm copper / steel	-/120/120
Ø150mm copper / steel	-/120/120
Ø300mm steel	-/120/90
Ø100mm brass	-/120/90

**Note : Ø300mm steel pipe tested in 116mm thick FR  
plasterboard wall**

Web based drawings are for example only. Fire performance of any system is dependant on, but not limited to, size of opening, substrate, if penetrations are passing through, type, size and number. Please refer to Ryanfire technical department for detailed and specific fire performance information.



RYANFIRE Technical Support:  
info@ryanfire.co.nz - Tel 09 443 0362

Drawing Title  
**Ryanbatt 502 & Rokwrap to metal pipes  
Plasterboard wall**

Scale <b>NTS</b>	Date <b>April 2025</b>
Drawing Number <b>V7.1</b>	Rev <b>6.0</b>

**All errors and omissions excepted.** The information contained within this drawing is believed to be correct on the date of publication, and is based upon tested and certified solutions. The policy of **Ryanfire Products** is one of constant improvement. Installers must ensure that they are following the latest published drawings, test evidence and instructions. Whilst **Ryanfire Products** will endeavour to keep its publications up to date, the accuracy of the information contained within this drawing may be affected by pertinent changes in the law or regulatory requirements and alterations or amendments to the specification of **the manufactured** products. Terms and conditions of sale apply.

Ryanfire Products owns and has copyright to these drawings. They are to be used only for the purpose for which they were intended and supplied and are not to be sold, transferred or made available for use by a third party. Any misuse of these drawings will result in legal proceedings.