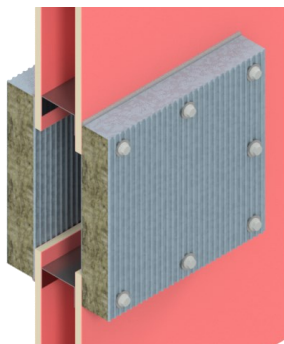
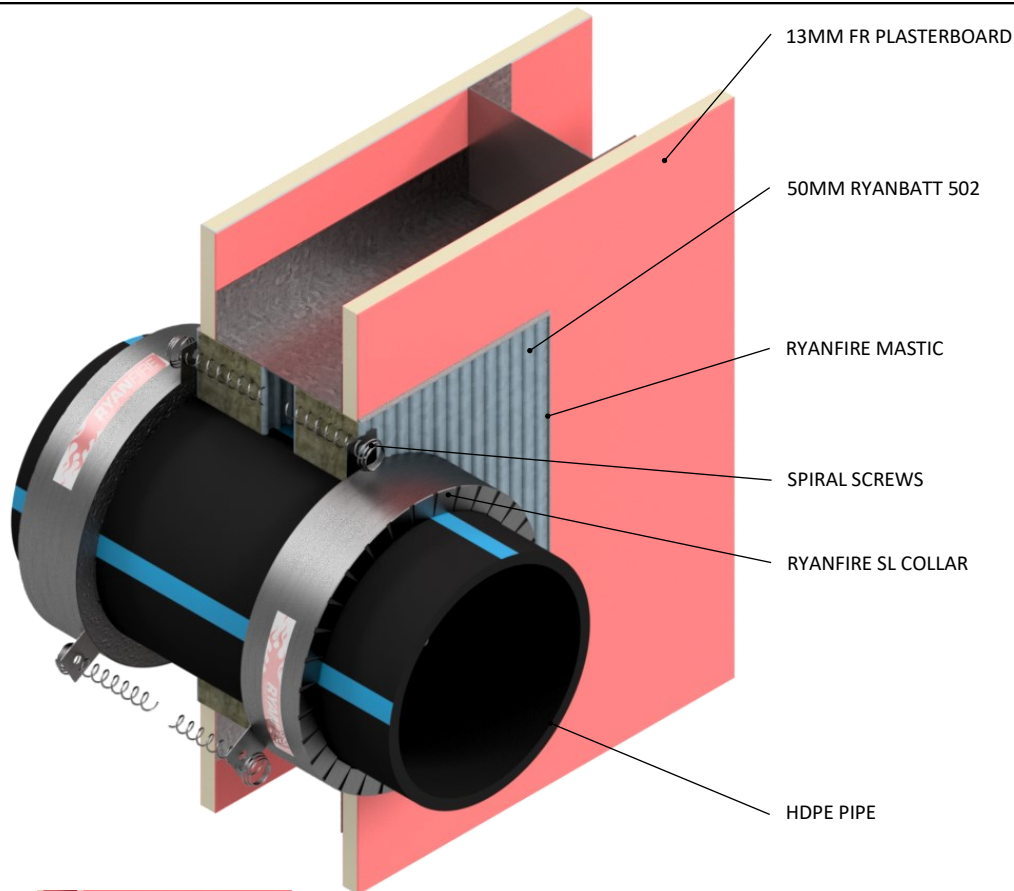


## INSTALLATION INSTRUCTIONS

1. ENSURE APERTURE IS CLEAN AND FREE OF DUST AND DEBRIS
2. CUT THE RYANBATT 502 TO THE REQUIRED SIZE AND SHAPE TO FIT TIGHTLY WITHIN THE APERTURE
3. CUT THE RYANBATT 502 TO FIT TIGHTLY AROUND THE HDPE PIPE
4. CUT THE RYANBATT ACROSS THE SHORTEST DIMENSION INCORPORATING THE MIDPOINT OF THE PENETRATION TO ENABLE THE BOARD TO BE FITTED INTO THE APERTURE.
5. APPLY RYANFIRE BRUSH GRADE MASTIC TO ALL THE EXPOSED & CUT EDGES OF THE RYANBATT.
6. INSERT THE RYANBATT INTO THE OPENING.
7. APPLY A BEAD OF MASTIC TO THE JOINT BETWEEN THE RYANBATT 502 AND THE HDPE PIPE.
8. APPLY A 5MM BEAD OF RYANFIRE MASTIC TO THE PERIMETER OF THE RYANBATT AND TO ANY JOINTS AND GAPS.
9. SELECT THE CORRECT SIZE RYANFIRE SL COLLAR TO FIT AROUND THE PIPE.
10. SECURE THE SL COLLAR AROUND THE PIPE AND SLIDE IT UP UNTIL IT IS FLUSH WITH THE RYANBATT. FIX THE SL COLLAR INTO PLACE USING 75MM SPIRAL SCREWS.
11. REPAIR ANY DAMAGE THAT MAY HAVE OCCURRED TO THE COATING DURING INSTALLATION USING RYANFIRE MASTIC.
12. REPEAT THIS PROCESS TO THE OPPOSITE SIDE OF THE WALL.



**THIS SYSTEM MAY BE INSTALLED USING A PATTERNS FIT CONFIGURATION.  
PLEASE CONTACT RYANFIRE TECHNICAL SUPPORT  
FOR MORE INFORMATION.**

**Please note:**  
Ryanfire Products Ltd owns and has copyright in these drawings. They are to be used only for the purpose for which they were intended and supplied and are not to be sold, transferred or made available for use by a third party.

Any misuse of these drawings will result in legal proceedings.

**All errors and omissions excepted** - the information contained within this drawing is believed to be correct on the date of publication, and is based upon tested and certified solutions. The policy of **RyanFire Products Ltd** is one of constant improvement. Installers must therefore ensure that they are following the latest published drawings, test evidence and instructions. Whilst **RyanFire Products Ltd** will endeavour to keep its publications up to date, the accuracy of the information contained within this drawing may be affected by pertinent changes in the law or regulatory requirements and alterations or amendments to the specification of the **manufactured** products. Terms and conditions of sale apply.

RYANFIRE Technical Support: [info@ryanfire.co.nz](mailto:info@ryanfire.co.nz) Tel 09 443 0362

<b>Products:</b>	<b>RYANBATT 502</b> <b>RYANFIRE SL COLLAR</b> <b>RYANFIRE MASTIC</b>		
<b>Approval:</b>	<b>AS 1530.4/AS 4072.1</b>		
<b>BK:</b>	<b>62 / 33</b>		
<b>Ref:</b>	<b>PF 19010 / FAS 210123</b>		
<b>ID:</b>	<b>19, 20 / Table 45</b>		
<b>Scenario:</b>	Penetration seal to HDPE pipes		
<b>Services:</b>	Up to Ø150mm HDPE pipes		
<b>Construction:</b>	90mm FR plasterboard / Masonry wall / Korok wall		
<b>Aperture:</b>	1200mm high x 3000mm wide, fully framed		
<b>Fire Integrity:</b>	60 minutes	} Up to Ø40mm	
<b>Fire Insulation:</b>	60 minutes		
<b>Fire Integrity:</b>	30 minutes	} Up to Ø150mm	
<b>Fire Insulation:</b>	30 minutes		

Web based drawings are for example only. Fire performance of any system is dependant on, but not limited to, size of opening, substrate, if penetrations are passing through, type, size and number. Please refer to Ryanfire technical department for detailed and specific fire performance information.



Client			
Job Title			
Drawing Title			
<b>Ryanfire SL collar to HDPE pipes</b> <b>126mm plasterboard wall</b>			
Scale	<b>NTS</b>	Date	<b>May 2022</b>
Sheet Size	<b>A3</b>	Drawn By	
Drawing Number	<b>V5.6</b>	Rev	<b>3.0</b>