

Head Office

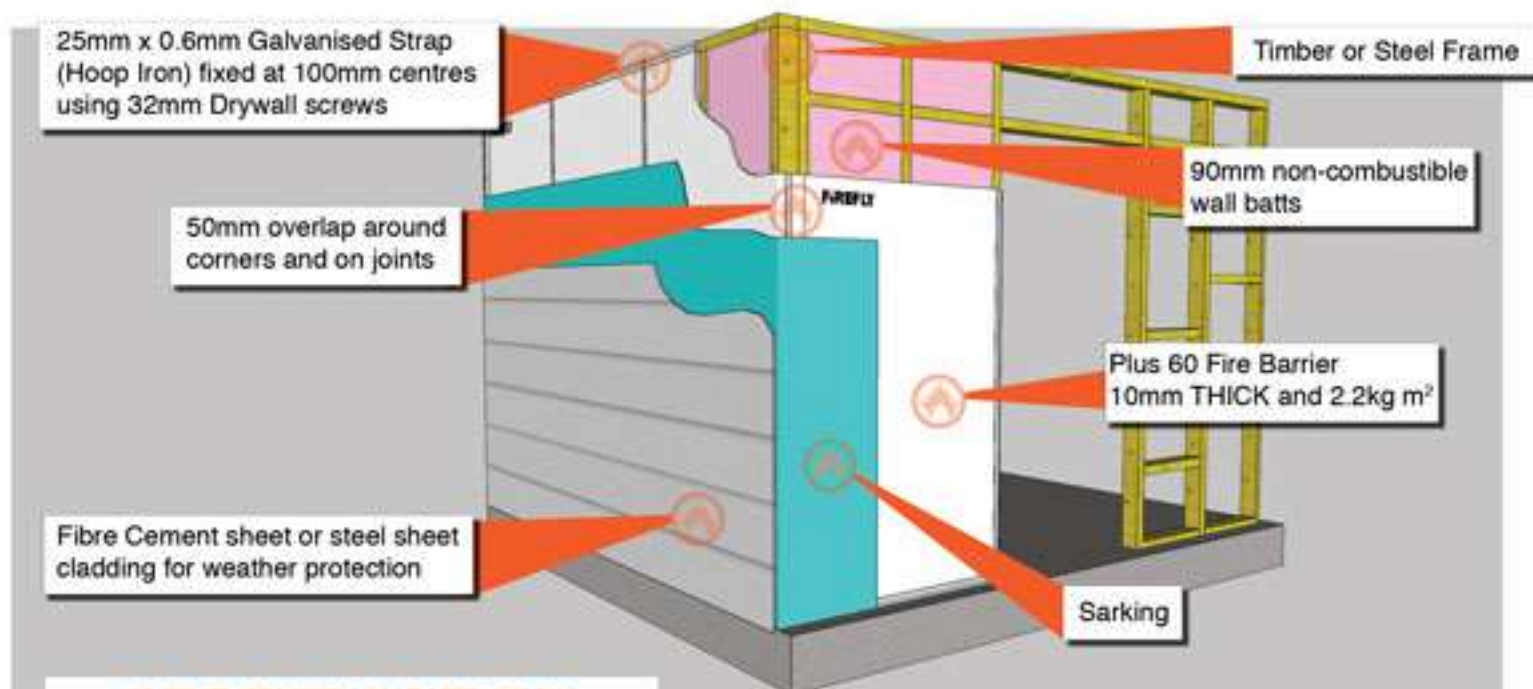
Unit 12, 8 Leighton Place
Hornsby
NSW, 2077
Australia

Firefly Office

P.O BOX 52
Laidley
QLD, 4341
Australia

Contact details

Phone: (07) 5411 4209
Mobile: 0400 966 899
Email: trevor@tbafirefly.com.au



CERTIFICATION

Tested both horizontally and vertically.
Tested in accordance with AS1530.4
Meets BAL-FZ requirements for Walls.
Meets BAL-FZ requirements for Underfloor

FRL-/60/30

TESTED FROM OUTSIDE IN

APPLICATIONS

Our Plus 60 fire blanket allows "Lightweight Constructed Buildings-Kit Homes/Commercial Sheds" to be built in bushfire areas which have been designated as being in the highest Bushfire Attack Level of Flame Zone (BAL-FZ). Simply wrap the external timber or steel framed walls and underfloor sections with our lightweight Plus 60 fabric and over clad using a product deemed to be non-combustible under the BCA for example, fibre cement sheeting or custom orb steel to weather proof the building. In accordance with AS3959-2009, the wall system must be either tested to AS1530.8.2 or alternatively a system with an FRL-/30/30 **when tested from outside in.**

PLUS 60 BAL-FZ WALL SYSTEM



RFS BUILDING BAL-FZ WALL
INSTALL NSW



EASILY WRAPPED AROUND
ARCHITECTURAL FEATURES -
CALLIGNEE 2 VICTORIA



WINDOW REVEAL FIXING DETAIL