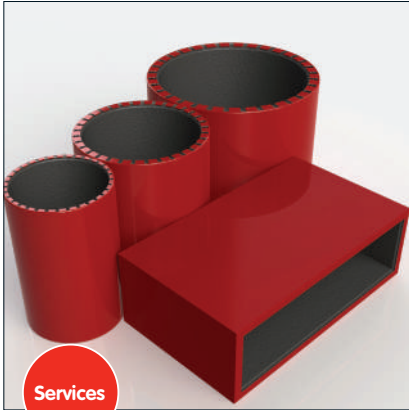


Intusleeve Cable

Integrity
up to
240
minutes

Insulation
up to
120
minutes



Services

A high pressure graphite manipulated intumescent closer for cable penetrations.

Description

All Intusleeve will arrive preconfigured based upon requirements. The outer shell is steel lined with a high expansion intumescent and is specifically designed to provide a low cost solution for cables, conduits and combustible pipes and closing the cavity.

Lengths range from 140 mm minimum to 300 mm, but can be made to any length above 140 mm, dependent on requirement and timescales.

Dimensions and Colour

Rectangular:

204 mm x 60 mm, 110 mm x 54 mm, 220 mm x 90 mm, 300 mm x 25 mm, 225 mm x 25 mm.

Circular:

50 mm to 160 mm diameter.

Standard length: 140 mm. Other sizes available to order on request.

Colour: standard colour is red with black foam smoke seal.

Fire testing

- Tested at Exova BM Trada to BS EN 1366-3 and BS476 Pt 20-22 to 240 minutes Integrity and 120 minutes insulation



Features

- Ultra-slim body design ensures easy installation in awkward situations
- Fully tested at Exova BM TRADA to 2 hours integrity and Insulation in walls
- 4 hours integrity and insulation 120 minutes when used within 100 mm Intucompound floor seals

Applications

Intusleeve Cable management provides a tested fire solution to cables, cables within conduits, and combustible pipes passing through internal walls and floors. During a fire, the Intumescent within the metal sleeve expands and crushes the heat softened combustible elements, leaving a potential path for fire completely sealed. Once installed within the substrate, the Intusleeve product allows the removal and installation of services, without the risk of damaging fire seals.

Installation

1. Remove lid or pull open Intusleeve Cable and fit around cables or position within wall for future cable application. Replace lid.
2. Push Intusleeve through compartment wall ensuring equal overhang to each side.
4. Seal in place using Firetherm Intumastic or Intumastic ADL sealant in gaps up to 20 mm. Larger openings may be sealed with Firetherm Intubatt.
5. Annular spaces up to 60 mm may be packed using a minimum 60 mm depth 64 kg rock fibre.

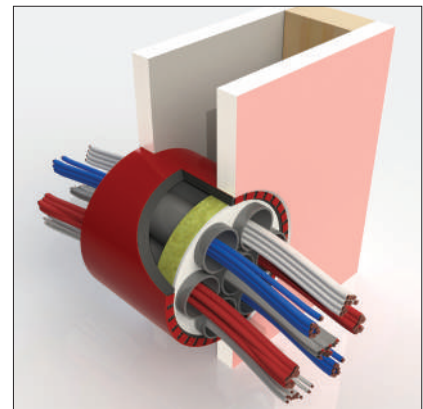
Length of sleeve is relative to the width of wall and should be specified when placing order

220 x 90 mm sleeve requires a minimum 250 mm length of sleeve all other sizes minimum 140 mm length

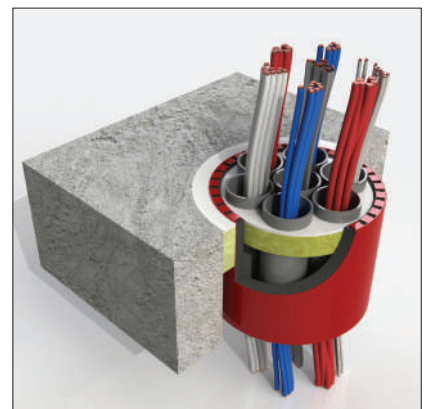
Specification

Install Firetherm Intusleeve Cable to seal around all Cables. Design and installation to be fully in accordance with manufacturer's instructions.

Typical Details



Intusleeve Cable in dry lined wall



Intusleeve Cable in concrete floor

Firetherm Intumescent & Insulation Supplies Limited
Unit F Acorn Industrial Park, Crayford Road, Crayford, Kent DA1 4FT
Phone: 01322 551010 Fax: 01322 552727 Email: sales@firetherm.com www.firetherm.com



This data sheet offers guidance related to fire testing results and does not offer methodology of the installation of the product. Suitability of this product and its usage to substrate type, service type and fire requirement must be confirmed before installation commences. A specific detail relevant to installation must be requested. Firetherm recommend that all fire stopping products should be installed by a third party accredited fire stopping contractor or competent person. Full application details and methodology instructions should be requested before installation of this product commences. Standard terms and conditions apply at all times.