



Firetherm Intumescent & Insulation Supplies Limited

Data Sheet Number As 1530.4/UK-BS-EN 7006

Quality Assured

Fire Protection

Product Data Sheet - Intucollar

Application

Firetherm Intucollar is a high pressure graphite manipulated Intumescent expansion device encased in a mild steel casing designed to close combustible elements whilst maintaining compartmentation.

Description

Firetherm Intucollar is a mild steel casing with fixing legs - pre lined with a Ruberoid graphite loaded strap most commonly fixed around combustible Insulation, cable bundles or combustible pipes.

Intucollars are fixed into position using mild steel fixings with a minimum substrate embedment of 25mm

Specifications

Available Sizes

32mm - 200mm dia

Installation Basic requirements

Position Intucollar hard up against the surface of the fixing substrate, secure mild steel fixings through each leg of the collar to a minimum embedment of 25mm

Fire Testing

Tested to:

AS1530.4-2005

BS-EN 1366 PT 4.

BS 476 Part 20/22

Third Party Accredited by Exova Warrington.

Typical Benefits

Fully Tested for up to 120 minutes integrity and insulation (dependant on specific application).

Individually packaged

Suitable for use around various types of insulation, cable and combustible pipes.

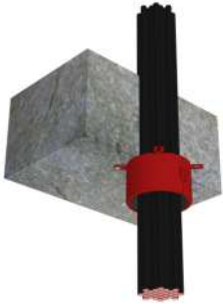
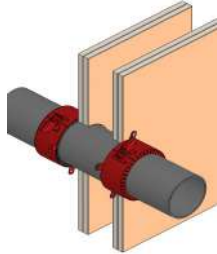
Typical Configuration Types.

Combustible pipes, Insulations types, Rockfibre, Glass fibre , Phenolic, Nitrile Rubbers.

Tested In Floors and Walls including Lightweight Partitions

May also be used within Firetherm Intubatt Please consult literature or technical department.

Firetherm recommend that all fire stopping products should be installed by a third party accredited fire stopping contractor. Full application details and methodology instructions should be requested before installation of this product commences .



Ryanfire Products Limited

11 Ashfield Road, Wairau Valley
PO Box 302185
North Harbour
Auckland 0751

Phone: +64 (9) 443 0362
Fax: +64 (9) 443 0364
Email: nz@firetherm.com
Web: www.firetherm.com

