

DESCRIPTION

Ryanfire Ryanlite steel protection board is capable of withstanding high temperatures. It is highly effective for protecting structural steel and for providing thermal breaks in construction.

It is easy to handle and install due to the low thicknesses required. Available in 20mm, 40mm & 50mm thicknesses with a reinforced aluminium foil facing.

CERTIFICATION

Ryanlite has been tested and assessed in accordance with BS476-21 at NATA accredited laboratories.

APPLICATION

Ryanlite is used as a dry install, boarding system for the fire protection of structural steel elements. The thickness needed is determined by the section factor of the steel and the fire rating required.

Ryanlite may also be utilised as a thermal break between steel framing and external cladding.

PRODUCT DIMENSIONS

| Product | Length x Width | Thickness | Density |
|-----------------|----------------|-----------|----------------------|
| Ryanlite 20mm | 2000 x 1200mm | 20mm | 160kg/m ³ |
| Ryanlite 50mm | 2000 x 1200mm | 50mm | 160kg/m ³ |
| Ryanlite S 20mm | 1800 x 1200mm | 20mm | 160kg/m ³ |
| Ryanlite S 40mm | 1800 x 1200mm | 40mm | 160kg/m ³ |

REACTION TO FIRE

| Property | Value | Standard |
|-----------------------------|-------|------------------------------------|
| Reaction to Fire, Euroclass | A1 | EN 13162:2012+A1:2015 (EN 13501-1) |

THERMAL RESISTANCE

| Property | Value | Standard |
|----------------------------------|------------|-------------------------|
| Thermal Conductivity λ_D | 0.038 W/mK | EN 13162:2012 + A1:2015 |

WATER PERMEABILITY

| Property | Value | Standard |
|--|-------------------------|----------------------------------|
| Water Absorption, Short Term WS, W _p | $\leq 1 \text{ kg/m}^2$ | EN 13162:2012+A1:2015 (EN 1609) |
| Water Absorption, Long Term WL(P), W _{lp} | $\leq 3 \text{ kg/m}^2$ | EN 13162:2012+A1:2015 (EN 12087) |

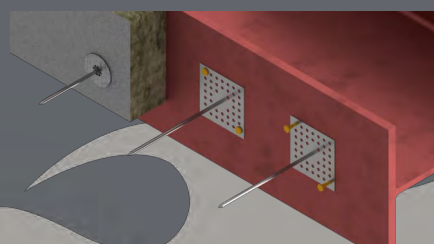
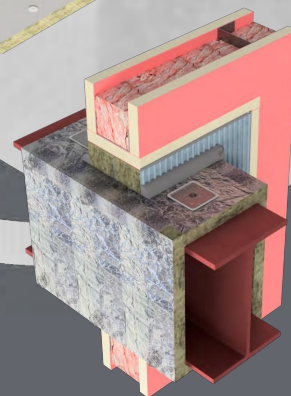
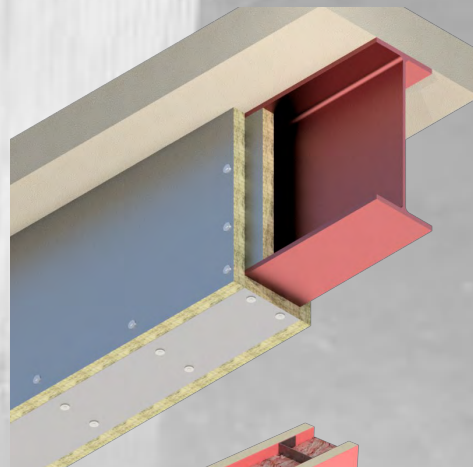
R-VALUE

| | |
|---------------|-------|
| Ryanlite 20mm | R0.52 |
| Ryanlite 50mm | R1.31 |



Ryanlite steel protection board

For more detailed installation instructions, please refer to Ryanlite Installation Guide (available for download from www.ryanfire.co.nz) or contact the Ryanfire technical department.



FEATURES

- Tested to BS476-21
- Dry installation - easy to handle
- Effective structural steel protection
- Excellent thermal capability

The information provided in this document is issued in good faith. As part of Ryanfire Products ongoing product development and testing, we reserve the right to modify product specifications without notice. Any drawings given are for illustrative purposes only. Ryanfire Products accepts no liability whatsoever for any loss, damage or injury arising from the misinterpretation or misuse of the information given. Subject to our standard terms and conditions.

For more information please contact Ryanfire
info@ryanfire.co.nz 09 443 0362

Ryanfire TDS/RLite V1.2 08/2024