



RYANFIRE PRODUCTS LIMITED. PASSIVE FIRE PROTECTION | PLUMBING



New Zealand's leading supplier of passive fire protection solutions

PLUMBING

PASSIVE FIRE PROTECTION GUIDE



 *We are impressed with the testing Ryanfire have conducted on their product range, its so much easier dealing direct with the manufacturer and having immediate access to technical information and supporting test data.* 

Brian Vranjes – **Fire Engineering Limited**, Auckland, NZ

A large, stylized, abstract graphic of a flame or fire, rendered in various shades of blue, occupies the bottom half of the page. It features flowing, wavy lines that suggest the movement of fire.



PASSIVE FIRE PROTECTION SOLUTIONS FOR PLUMBING

Ryanfire have focused on product quality using stainless steel collar casings and graphite rubber linings manufactured in NZ. The plumbing industry is complex and requires critical forward planning to get it right. All our products have been comprehensively tested, and all fire test reports are available on request, or via the FPANZ Passive Fire Product Register NZ.

No matter where you are in the planning or building stage, we can offer you expert guidance to achieve the required rating and protection. Plumbing, like electrical and seismic etc, require a range of different sizes, shapes and configurations of exit points in buildings. Our range is comprehensive because our passive fire protection solutions can be used for most substrates for wall and floor separations.

We recognise it can be a very time consuming and costly process if the passive fire solutions are not right the first time. We understand that there is consideration for location of the service penetrations, the type of service, the quantity of the services per penetration and all myriad of size criteria; all aimed at delivering a fire resistance rating that meets the NZ building code.

Whether you are installing a combustible pipe through a floor or sealing around a brass wing-back through a plasterboard wall, we have the range, the variety and the expertise to ensure you have the right product for the right environment.

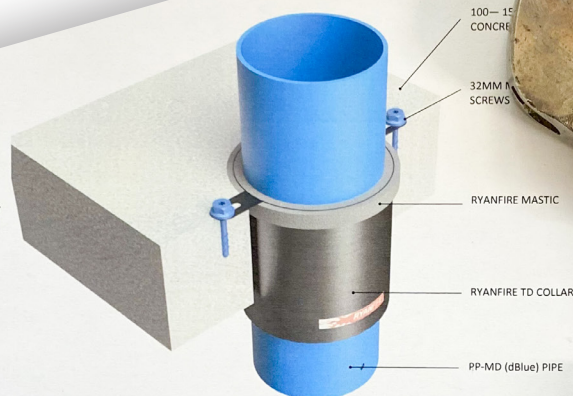
If we don't – just ask. We have a design and development team ready to help!

PAUL RYAN
MANAGING DIRECTOR



INSTALLATION INSTRUCTIONS

1. ENSURE THE APERTURE IS CLEAN AND FREE OF DUST AND DEBRIS.
2. SELECT THE CORRECT SIZE TD COLLAR TO FIT AROUND THE PP-MD PIPE.
3. SECURE THE TD COLLAR AROUND THE PP-MD PIPE AND SLIDE IT INTO THE APERTURE. ENSURE THE FIXING TABS ARE FLUSH WITH THE TOP OF THE FLOOR.
4. SECURE THE TD COLLAR IN POSITION USING 32MM MASONRY SCREWS THROUGH ALL FIXING TABS.
5. INSERT PEF BACKING ROD INTO THE ANNULAR GAP BETWEEN THE PP-MD PIPE AND THE COLLAR, RECESSED 15MM FROM THE TOP OF THE FLOOR.
6. APPLY 15MM DEEP RYANFIRE MASTIC BEAD INTO THE ANNULAR GAPS BETWEEN THE COMPOSITE FLOOR, TD COLLAR AND PP-MD PIPE.
7. CLEAN ANY EXCESS MASTIC USING A DAMP CLOTH.



On the underside of the substrate, the TD Collar may be exposed no more than 80mm, or be recessed no more than 10mm.

TD COLLAR SIZE	CORE HOLE DIAMETER
TD 40	Ø65-Ø72mm
TD 50	Ø70-Ø82mm
TD 65	Ø90-Ø102mm
TD 80	Ø105-Ø112mm
TD 100	Ø140-Ø142mm
TD 160	Ø160-Ø162mm
TD 205	Ø205-Ø225mm

Product: RYANFIRE TD COLLAR
Appr: RYANFIRE MASTIC
BK: 4/AS 4072.1
Ref: 155

Construction: 150
Fire Resistance: Ø150

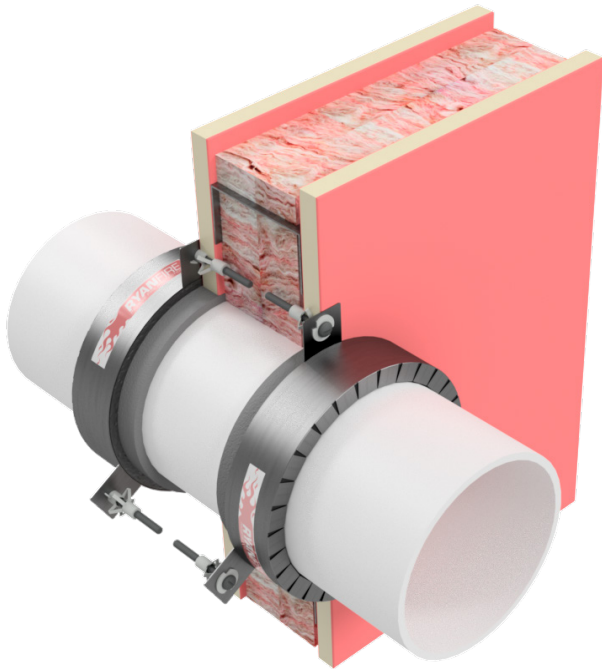
RYANFIRE Technical Support
Info@ryanfire.co.nz - Tel 09 444 4444

Drawing Title: Ryanfire TD Collar to 100-150mm concrete

Scale: NTS Date: Ju

FIRE COLLARS

Ryanfire SL Fire Collars consist of a high quality stainless steel casing lined with a graphite infused rubber strap most commonly fixed around combustible insulation, cable bundles or combustible pipes. They have a slimline profile to minimise service clearance.



APPLICATIONS

Suitable for use around various types of insulation, combustible pipes, cables and HVAC (heat pump) services.

Ryanfire SL Collars are tested on various floor & wall substrates including trapezoidal tray-deck composite floors, timber infill, CLT, PLT, KOROK, plasterboard, masonry and pre-cast concrete.

FEATURES

- Standard sizes from Ø25mm to Ø250mm.
- Stainless steel – rust free.
- Retro-fit capable.
- Tested to AS1530:2014 at IANZ / NATA accredited laboratories.
- FPANZ Passive Product Registered.
- Suitable for single layer plasterboard walls and ceilings.
- NZ made.
- Half collars (SL-H) now available.
- Easily fit with Hollow Wall Anchors.
- Slim line - low profile.
- 30, 60 or 120 minute fire ratings
– see Ryanfire website for latest details.

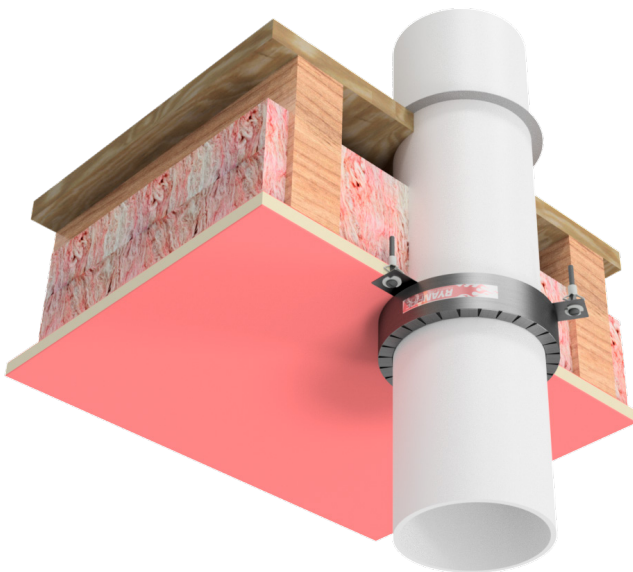
BASIC INSTALLATION REQUIREMENTS

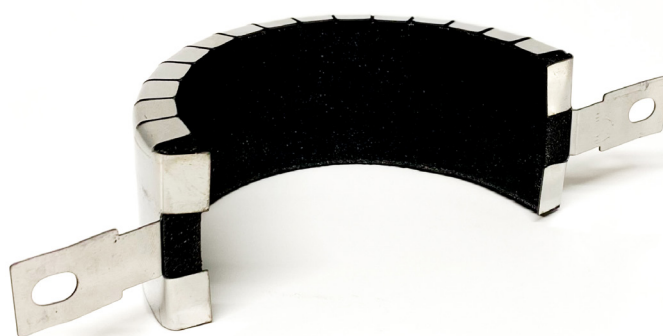
Apply Ryanfire Mastic into the annular gaps between the service and the substrate for a smoke seal.

Position SL Collar hard up against the surface of the fixing substrate, secure mild steel fixings through each leg of the collar to a minimum embedment of 25mm.

Single layer plasterboard applications require Hollow Wall Anchors.

For more detailed installation instructions refer to the Ryanfire system data sheets (V drawings) on our website or contact us.





SL FIRE COLLAR

CODES AND DIMENSIONS

CODE	SL 25	SL 32	SL 40	SL 55	SL 65	SL 82	SL 110	SL 125	SL 160
Nominal Pipe Ø (mm)	25	32	40	50	65	80	100	120	150
Collar Outside Ø (mm)	35	48	57	71	82	98	134	145	198
Collar Inside Ø (mm)	25	34	43	57	68	84	115	126	165
Collar Height (mm)	30	30	30	30	30	30	30	45	45

For larger diameter service penetrations

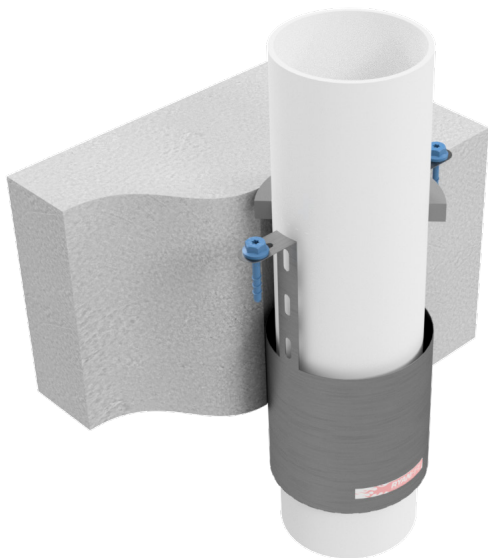
CODE	SL-X 200	SL-X 250
Nominal Pipe Ø (mm)	200	250
Collar Outside Ø (mm)	235	295
Collar Inside Ø (mm)	205	250
Collar Height (mm)	130	130

Note: Sizes and dimensions are nominal.

Detailed "V Drawings" available on request or on the [Ryanfire website](http://ryanfire.com)

TD (DROP-IN) FIRE COLLARS

Ryanfire TD Fire Collars consist of a high quality stainless steel casing lined with a highly reactive graphite infused rubber strap. Most commonly fixed around combustible pipes, HVAC services or cable bundles . They are designed to be installed from the top of the floor.



APPLICATIONS

Suitable for use around various types of combustible pipes, cables and HVAC (heat pump) services.

Ryanfire TD Collars are tested on various floor substrates including trapezoidal tray-deck composite floors, timber infill, masonry and pre-cast concrete.

FEATURES

- Standard sizes from Ø40mm to Ø160mm.
- Stainless steel – rust free.
- Now with extendable tabs for thicker floors
- Tested to AS1530:2014 at IANZ accredited fire testing laboratories.
- FPANZ Passive Product Registered.
- NZ made.
- Installed from above – no working at heights.
- Speedy installation - economical install.
- Test documentation available on request.
- 30, 60 or 120 minute fire ratings – see Ryanfire website for latest details.



BASIC INSTALLATION REQUIREMENTS

Position TD Collar around the penetration and push down into the substrate until the tabs are flush with the surface of the substrate. Secure mild steel fixings through each leg of the collar to a minimum embedment of 32mm. Any annular gap between service, collar and substrate to be filled with Ryanfire Mastic.

TD FIRE COLLAR

CODES AND DIMENSIONS

CODE	TD 40	TD 50	TD 65	TD 80	TD 100	TD 125	TD 160
Nominal Pipe Ø (mm)	40	50	65	80	100	120	150
Collar Outside Ø (mm)	58	68	85	102	136	152	200
Collar Inside Ø (mm)	45	55	65	84	110	125	164
Collar Height	130	130	130	130	130	130	130
Core Hole Size (mm)	65-72	70-82	90-102	105-112	140-142	160-162	205-225

Note: Sizes and dimensions are nominal.

HP-X GRAPHITE SEALANT

Ryanfire HP-X fire rated pressure exerting sealant is a specialised cohesive sealant used for sealing apertures around service penetrations passing through fire rated separations. It is a water based, graphite infused acrylic resin formulation that dries quickly on application.

APPLICATIONS

- Cables
- Combustible pipes
- Cable conduits
- HVAC bundles

FIRE TESTING

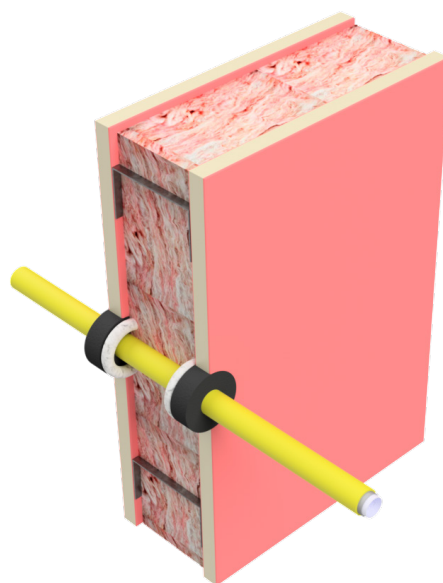
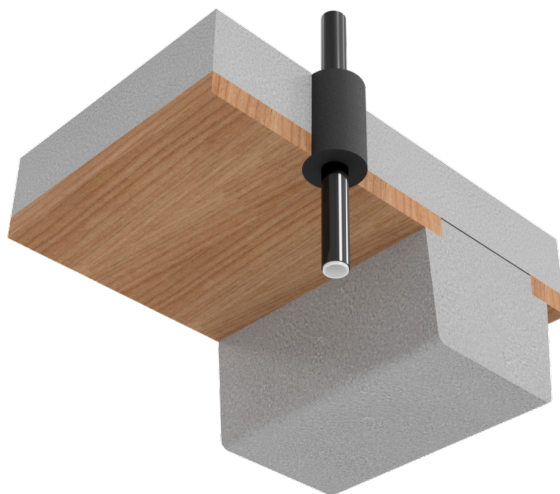
Tested in accordance with AS 1530.4-2014.
FPANZ Passive Product Registered.

DIMENSION & COLOUR

Cartridge size: 310ml.

Colour: Dark Grey

Ryanfire recommend that all fire stopping products should be installed by a third-party, accredited fire stopping specialist contractor. Full application details and methodology instructions should be requested before installation of the product. These are available from the Ryanfire technical department.



Detailed "V Drawings" available on request or on the [Ryanfire website](https://www.ryanfire.com.au)



Contact Us

AUCKLAND

11 Ashfield Road, Wairau Valley, Auckland 0627

Postal Address: PO Box 302185, North Harbour,
Auckland, New Zealand

P: +64 9 443 0362

CHRISTCHURCH

29 Lunns Road, Middleton 8024

P +64 3 348 9279

WELLINGTON

77/12 Mohuia Crescent, Elsdon, Porirua 5022

P: +64 4 237 0004

www.ryanfire.co.nz

E: info@ryanfire.co.nz

