

KOROK

FIRE AND ACOUSTIC WALL SYSTEMS



FIRE STOPPING FOR KOROK® WALL SYSTEMS

KOROK® WALLS

KOROK® is a clever panel wall system comprised of a lightweight core and a reinforcing steel shell that is very quick to install. AS1530.4 requires fire-stopping penetration systems to be fire-tested and/or assessed to determine the FRL of the specific penetration in different wall types. The systems in this datasheet have been tested and approved specifically for use in KOROK® wall systems, providing compliance under the NZBC.

FEATURED PRODUCTS

- Ryanbatt 502
- Ryanfire Mastic
- Ryanfire HP-X
- Ryanspan
- Ryanfire SL Collar
- Ryanfire Graphite Strap
- Servowrap
- Ryanfire Rokwrap
- FyreSHIELD™ Access Panel

APPLICATIONS AND SERVICES

- Power and Data Cables
- PVC Pipes & Sockets
- PVC Conduits
- Metal Pipes
- Insulated Metal Pipes
- HVAC Bundles
- PEX Pipes
- PEX-AL-PEX Pipes
- Structural Steel
- Vertical Linear Gaps
- Blank Apertures
- Access Panels



SYSTEM AND INSTALLATION OVERVIEWS

51MM KOROK WALL (60 MINUTE APPLICATIONS)

COPPER AND STEEL PIPES.....

5

PVC PIPES.....

6

HVAC BUNDLES.....

8

FLEXI CABLE CONDUIT.....

9

CABLE BUNDLES.....

10

CONTROL JOINT VERTICAL LINEAR GAP.....

13

78MM KOROK WALL (120 MINUTE APPLICATIONS)

PVC PIPES

14

FIRE RATED ACCESS PANEL.....

17

RYANBATT 502 BOARD SEALS

INSTALLATION OVERVIEWS.....

19

METAL PIPES.....

21

CABLE TRAY

22

STRUCTURAL STEEL

23



INSTALLATION INSTRUCTIONS

1. ENSURE THE APERTURE IS CLEAN AND FREE OF DUST AND DEBRIS.
2. SELECT THE CORRECT SIZE TD COLLAR TO FIT AROUND THE PP-MD PIPE.
3. SECURE THE TD COLLAR AROUND THE PP-MD PIPE AND SLIDE IT INTO THE APERTURE. ENSURE THE FIXING TABS ARE FLUSH WITH THE TOP OF THE FLOOR.
4. SECURE THE TD COLLAR IN POSITION USING 32MM MASONRY SCREWS THROUGH ALL FIXING TABS.
5. INSERT PEF BACKING ROD INTO THE ANNULAR GAP BETWEEN THE PP-MD PIPE AND THE COLLAR, RECESSED 15MM FROM THE TOP OF THE FLOOR.
6. APPLY 15MM DEEP RYANFIRE MASTIC BEAD INTO THE ANNULAR GAPS BETWEEN THE COMPOSITE FLOOR, TD COLLAR AND PP-MD PIPE.
7. CLEAN ANY EXCESS MASTIC USING A DAMP CLOTH.

On the underside of the substrate, the TD Collar may be exposed no more than 80mm, or be recessed no more than 10mm.

TD COLLAR SIZE	CORE HOLE DIAMETER
TD 40	Ø65-Ø72mm
TD 50	Ø70-Ø82mm
TD 65	Ø90-Ø102mm
TD 80	Ø105-Ø117mm

RYANFIRE TD COLLAR
RYANFIRE MASTIC
AS 1530.4/AS 4072.1
66 / 79 / 155
FRT 190286 / FRT 200018 /
SFR00049
E / D-H
ation seal to PP-MD pipes
0mm PP-MD pipes
the floor
60/60
Construct
150mm
Fire Resistan
150mm

based drawings are f
formance of any system
d to, size of opening, st
through, type, size and
e technical department fo
ance information.

RYANFIRE
PASSIVE FIRE
RYANFIRE Technical Support:

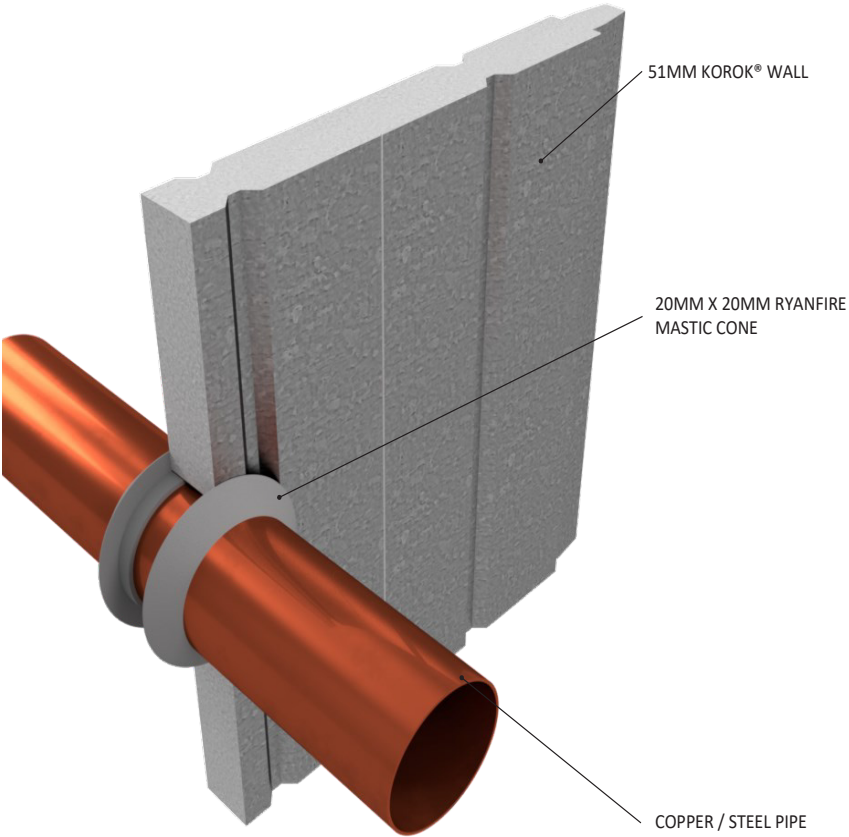
60 MINUTE APPLICATIONS

51MM KOROK® WALL



INSTALLATION INSTRUCTIONS

1. ENSURE THE APERTURE IS CLEAN AND FREE OF DUST AND DEBRIS.
2. APPLY RYANFIRE MASTIC INTO THE ANNULAR GAP BETWEEN THE METAL PIPE AND THE KOROK® WALL.
3. APPLY A 20MM X 20MM CONE OF RYANFIRE MASTIC AROUND THE JUNCTION BETWEEN THE METAL PIPE AND THE KOROK® WALL.
4. REPEAT THIS PROCESS ON THE OPPOSITE SIDE OF THE WALL.



Products:	RYANFIRE MASTIC
Approvals:	AS 1530.4:2014/AS 4072.1:2005
BK:	165
Ref:	22SFR00058
ID:	D-F
Scenario:	Penetration seal to copper / steel pipes
Services:	Up to Ø100mm copper pipes Up to Ø150mm steel pipes
Annular:	0 - 9mm
Construction:	51mm KOROK® wall
Fire Integrity:	60 minutes
Fire Insulation:	0 minutes

Web based drawings are for example only. Fire performance of any system is dependant on, but not limited to size of opening, substrate, if penetrations are passing through, type, size and number. Please refer to Ryanfire technical department for detailed and specific fire performance information.



RYANFIRE Technical Support:
info@ryanfire.co.nz - Tel 09 443 0362

Drawing Title
**Ryanfire Mastic to copper/steel pipes
51mm KOROK® wall**

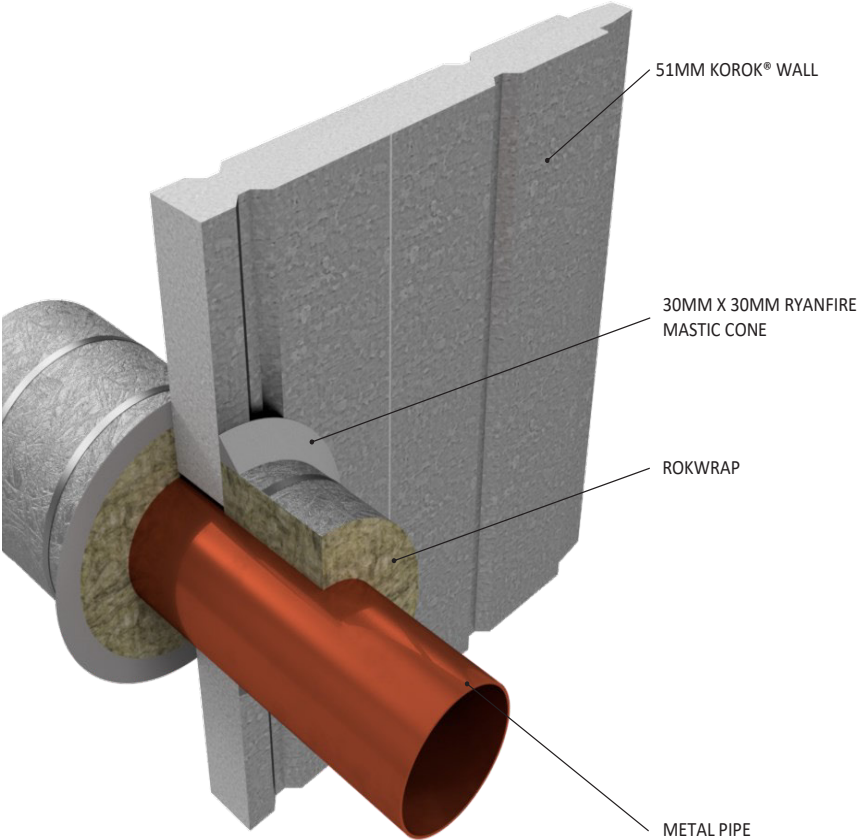
Scale	NTS	Date	April 2025
Drawing Number	V1.12	Rev	3.0

All errors and omissions excepted. The information contained within this drawing is believed to be correct on the date of publication, and is based upon tested and certified solutions. The policy of Ryanfire Products is one of constant improvement. Installers must ensure that they are following the latest published drawings, test evidence and instructions. Whilst Ryanfire Products will endeavour to keep its publications up to date, the accuracy of the information contained within this drawing may be affected by pertinent changes in the law or regulatory requirements and alterations or amendments to the specification of the manufactured products. Terms and conditions of sale apply.

Ryanfire Products owns and has copyright to these drawings. They are to be used only for the purpose for which they were intended and supplied and are not to be sold, transferred or made available for use by a third party. Any misuse of these drawings will result in legal proceedings.

INSTALLATION INSTRUCTIONS

1. ENSURE THE APERTURE IS CLEAN AND FREE OF DUST AND DEBRIS.
2. WRAP 1000MM WIDE X 40MM THICK RYANFIRE ROKWRAP TIGHTLY AROUND THE PIPE WITH A 100MM OVERLAP.
3. SECURE THE ROKWRAP INTO PLACE WITH STEEL CABLE TIES, 50MM FROM EACH END, AND AT MINIMUM 150MM CENTRES. SEAL ANY EXPOSED EDGES OF THE ROKWRAP WITH FOIL TAPE.
4. APPLY A 30MM X 30MM CONE OF RYANFIRE MASTIC AROUND THE JUNCTION BETWEEN THE WRAPPED METAL PIPE AND THE KOROK® WALL.
5. CLEAN ANY EXCESS MASTIC WITH A DAMP CLOTH.
6. REPEAT THIS PROCESS ON THE OPPOSITE SIDE OF THE WALL.



Products:	RYANFIRE MASTIC RYANFIRE ROKWRAP
Approvals:	AS 1530.4:2014/AS 4072.1:2005
BK:	210
Ref:	23SFR00034
ID:	A - C
Scenario:	Penetration seal to AS1530.4 Appendix E non-combustible pipes
Services:	Up to Ø100mm brass pipes Up to Ø150mm copper/steel pipes
Annular:	0 - 7mm
Construction:	51mm KOROK® wall
Fire Resistance:	Ø32mm Copper : -/60/60 Ø150mm Copper : -/60/60 Ø100mm Brass : -/60/30

Web based drawings are for example only. Fire performance of any system is dependant on, but not limited to size of opening, substrate, if penetrations are passing through, type, size and number. Please refer to Ryanfire technical department for detailed and specific fire performance information.



RYANFIRE Technical Support:
info@ryanfire.co.nz - Tel 09 443 0362

Drawing Title
**Ryanfire Rokwrap to metal pipes
51mm KOROK® wall**

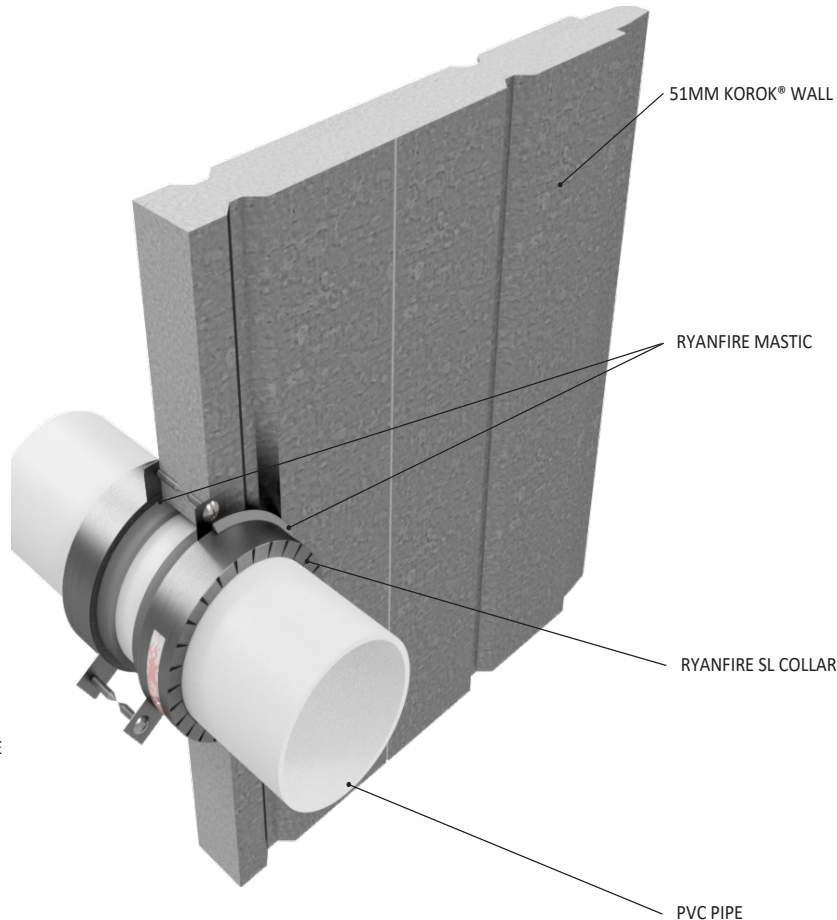
Scale	NTS	Date	April 2025
Drawing Number	V1.18	Rev	3.0

All errors and omissions excepted. The information contained within this drawing is believed to be correct on the date of publication, and is based upon tested and certified solutions. The policy of Ryanfire Products is one of constant improvement. Installers must ensure that they are following the latest published drawings, test evidence and instructions. Whilst Ryanfire Products will endeavour to keep its publications up to date, the accuracy of the information contained within this drawing may be affected by pertinent changes in the law or regulatory requirements and alterations or amendments to the specification of the manufactured products. Terms and conditions of sale apply.

Ryanfire Products owns and has copyright to these drawings. They are to be used only for the purpose for which they were intended and supplied and are not to be sold, transferred or made available for use by a third party. Any misuse of these drawings will result in legal proceedings.

INSTALLATION INSTRUCTIONS

1. ENSURE THE APERTURE IS CLEAN AND FREE OF DUST AND DEBRIS.
2. SELECT THE CORRECT SIZE RYANFIRE SL COLLAR TO FIT AROUND THE PVC PIPE.
3. APPLY RYANFIRE MASTIC INTO THE ANNULAR GAP BETWEEN THE PVC PIPE AND THE KOROK® WALL.
4. SECURE THE SL COLLAR AROUND THE PIPE AND SLIDE IT UP UNTIL IT IS FLUSH WITH THE SURFACE OF THE WALL. FIX THE COLLAR INTO PLACE USING 12G X 30MM TEK SCREWS.
5. APPLY A NOMINAL 5MM BEAD OF RYANFIRE MASTIC AROUND THE JOINT BETWEEN THE SL COLLAR AND THE KOROK® WALL.
6. REPEAT THIS PROCESS ON THE OPPOSITE SIDE OF THE WALL.



Products: RYANFIRE SL COLLAR
RYANFIRE MASTIC
Approvals: AS 1530.4:2014/AS 4072.1:2005
BK: 162
Ref: 22SFR00057
ID: A-D, F

Scenario: Penetration seal to PVC pipe

Services: Up to Ø150mm uPVC pipes

Construction: 51mm KOROK® wall

Fire Resistance: Ø50mm : -/60/60
Ø65mm : -/60/45
Ø80mm : -/60/60
Ø100mm : -/60/60
Ø150mm : -/60/60

Web based drawings are for example only. Fire performance of any system is dependant on, but not limited to size of opening, substrate, if penetrations are passing through, type, size and number. Please refer to Ryanfire technical department for detailed and specific fire performance information.



RYANFIRE Technical Support:
info@ryanfire.co.nz - Tel 09 443 0362

Drawing Title
SL Collar to PVC pipes
51mm KOROK® wall

Scale NTS	Date April 2025
---------------------	---------------------------

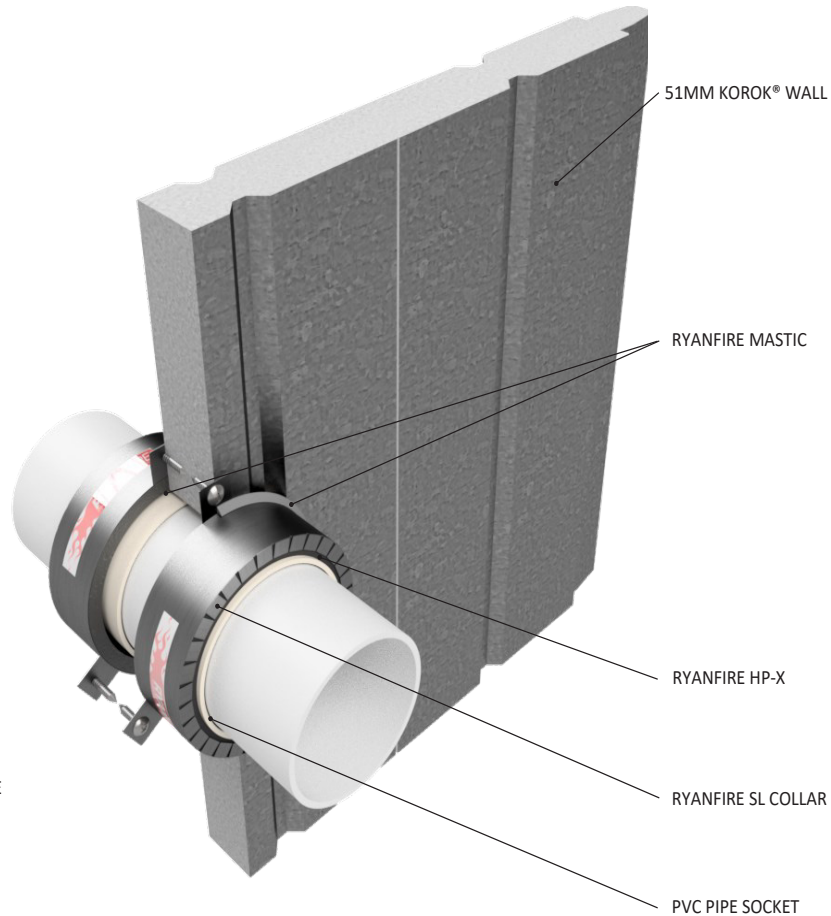
Drawing Number V21.25	Rev 3.0
---------------------------------	-------------------

All errors and omissions excepted. The information contained within this drawing is believed to be correct on the date of publication, and is based upon tested and certified solutions. The policy of Ryanfire Products is one of constant improvement. Installers must ensure that they are following the latest published drawings, test evidence and instructions. Whilst Ryanfire Products will endeavour to keep its publications up to date, the accuracy of the information contained within this drawing may be affected by pertinent changes in the law or regulatory requirements and alterations or amendments to the specification of the manufactured products. Terms and conditions of sale apply.

Ryanfire Products owns and has copyright to these drawings. They are to be used only for the purpose for which they were intended and supplied and are not to be sold, transferred or made available for use by a third party. Any misuse of these drawings will result in legal proceedings.

INSTALLATION INSTRUCTIONS

1. ENSURE THE APERTURE IS CLEAN AND FREE OF DUST AND DEBRIS.
2. SELECT THE CORRECT SIZE RYANFIRE SL COLLAR TO FIT AROUND THE PVC PIPE.
3. APPLY RYANFIRE MASTIC INTO THE ANNULAR GAP BETWEEN THE PVC PIPE AND THE KOROK® WALL.
4. SECURE THE SL COLLAR AROUND THE PIPE AND SLIDE IT UP UNTIL IT IS FLUSH WITH THE SURFACE OF THE WALL. FIX THE COLLAR INTO PLACE USING 12G X 30MM TEK SCREWS.
5. APPLY RYANFIRE HP-X INTO THE ANNULAR GAP BETWEEN THE SOCKET AND THE SL COLLAR, TO THE FULL DEPTH OF THE COLLAR.
6. APPLY A NOMINAL 5MM BEAD OF RYANFIRE MASTIC AROUND THE JOINT BETWEEN THE SL COLLAR AND THE KOROK® WALL.
7. REPEAT THIS PROCESS ON THE OPPOSITE SIDE OF THE WALL.



Products:	RYANFIRE SL COLLAR RYANFIRE HP-X RYANFIRE MASTIC
Approvals:	AS 1530.4:2014/AS 4072.1:2005
BK:	162
Ref:	225FR00057
ID:	E, G
Scenario:	Penetration seal to PVC pipes + socket joint
Services:	Up to Ø100mm PVC pipes + socket joint
Construction:	51mm KOROK® wall
Fire Resistance:	Ø40mm : -/60/60 Ø100mm : -/60/60

Web based drawings are for example only. Fire performance of any system is dependant on, but not limited to size of opening, substrate, if penetrations are passing through, type, size and number. Please refer to Ryanfire technical department for detailed and specific fire performance information.



RYANFIRE Technical Support:
info@ryanfire.co.nz - Tel 09 443 0362

Drawing Title
SL Collar to PVC socket
51mm KOROK® wall

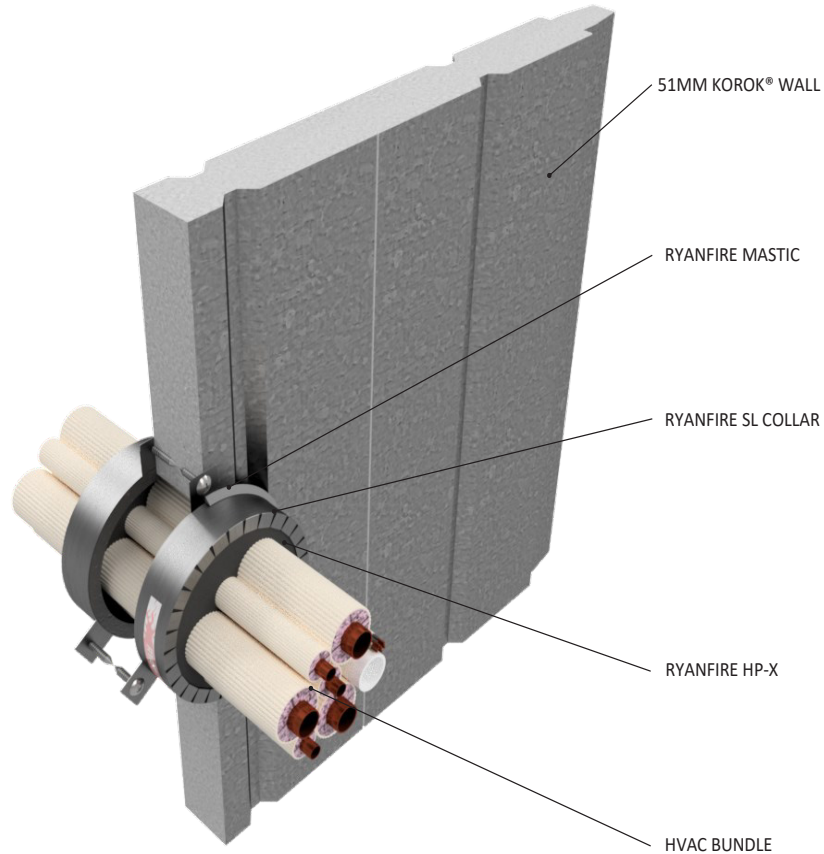
Scale	NTS	Date	April 2025
Drawing Number	V21.26	Rev	3.0

All errors and omissions excepted. The information contained within this drawing is believed to be correct on the date of publication, and is based upon tested and certified solutions. The policy of Ryanfire Products is one of constant improvement. Installers must ensure that they are following the latest published drawings, test evidence and instructions. Whilst Ryanfire Products will endeavour to keep its publications up to date, the accuracy of the information contained within this drawing may be affected by pertinent changes in the law or regulatory requirements and alterations or amendments to the specification of the manufactured products. Terms and conditions of sale apply.

Ryanfire Products owns and has copyright to these drawings. They are to be used only for the purpose for which they were intended and supplied and are not to be sold, transferred or made available for use by a third party. Any misuse of these drawings will result in legal proceedings.

INSTALLATION INSTRUCTIONS

1. ENSURE THE APERTURE IS CLEAN AND FREE OF DUST AND DEBRIS.
2. SELECT THE CORRECT SIZE RYANFIRE SL COLLAR TO FIT AROUND THE BUNDLE.
3. SECURE THE SL COLLAR AROUND THE PIPE AND SLIDE IT UP UNTIL IT IS FLUSH WITH THE SURFACE OF THE WALL. FIX THE COLLAR INTO PLACE USING 12G X 30MM TEK SCREWS.
4. APPLY RYANFIRE HP-X INTO THE ANNULAR GAP BETWEEN THE BUNDLE AND THE SL COLLAR, TO THE FULL DEPTH OF THE COLLAR.
5. APPLY A NOMINAL 5MM BEAD OF RYANFIRE MASTIC AROUND THE JOINT BETWEEN THE SL COLLAR AND THE KOROK® WALL.
6. REPEAT THIS PROCESS ON THE OPPOSITE SIDE OF THE WALL.



Products: RYANFIRE SL COLLAR
RYANFIRE HP-X
RYANFIRE MASTIC

Approvals: AS 1530.4:2014/AS 4072.1:2005

BK: 165

Ref: 225FR00058

ID: A, B

Scenario: Penetration seal to HVAC bundle
(heat pump services)

Services: Up to:
3 sets pair coil copper pipes
5 TPS cables
Ø20mm PVC pipe

Construction: 51mm KOROK® wall

Fire Resistance: 1 set pair coil bundle : -/60/45
3 sets pair coil bundle: -/60/60

Web based drawings are for example only. Fire performance of any system is dependant on, but not limited to size of opening, substrate, if penetrations are passing through, type, size and number. Please refer to Ryanfire technical department for detailed and specific fire performance information.



RYANFIRE Technical Support:
info@ryanfire.co.nz - Tel 09 443 0362

Drawing Title
**SL Collar & HP-X to HVAC bundle
51mm KOROK® wall**

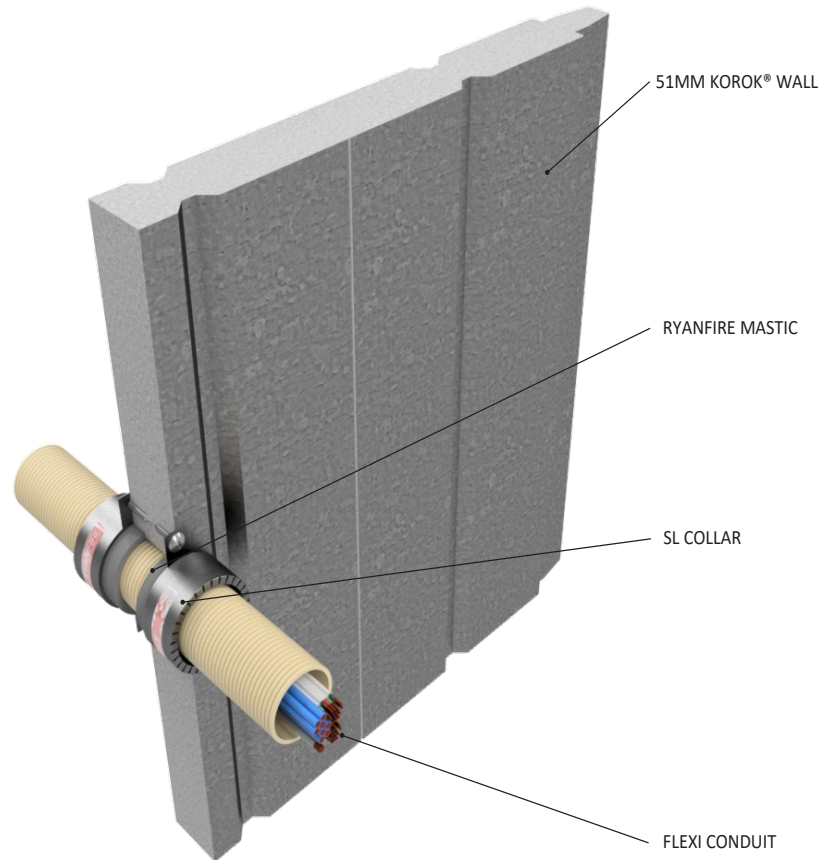
Scale	Date	
NTS	April 2025	
Drawing Number	Rev	
V14.13	3.0	

All errors and omissions excepted. The information contained within this drawing is believed to be correct on the date of publication, and is based upon tested and certified solutions. The policy of Ryanfire Products is one of constant improvement. Installers must ensure that they are following the latest published drawings, test evidence and instructions. Whilst Ryanfire Products will endeavour to keep its publications up to date, the accuracy of the information contained within this drawing may be affected by pertinent changes in the law or regulatory requirements and alterations or amendments to the specification of the manufactured products. Terms and conditions of sale apply.

Ryanfire Products owns and has copyright to these drawings. They are to be used only for the purpose for which they were intended and supplied and are not to be sold, transferred or made available for use by a third party. Any misuse of these drawings will result in legal proceedings.

INSTALLATION INSTRUCTIONS

1. ENSURE THE APERTURE IS CLEAN AND FREE OF DUST AND DEBRIS.
2. APPLY RYANFIRE MASTIC INTO THE ANNULAR GAP BETWEEN THE CONDUIT AND THE KOROK® WALL.
3. SELECT THE CORRECT SIZE RYANFIRE SL COLLAR TO FIT AROUND THE FLEXI CONDUIT.
4. SECURE THE SL COLLAR AROUND THE CONDUIT AND SLIDE IT ONTO THE FACE OF THE WALL. FIX THE COLLAR INTO THE WALL WITH 12G X 30MM TEK SCREWS.
5. CLEAN ANY EXCESS MASTIC WITH A DAMP CLOTH.
6. REPEAT THIS PROCESS ON THE OPPOSITE SIDE OF THE WALL.



Products: RYANFIRE SL COLLAR
RYANFIRE MASTIC
Approvals: AS 1530.4:2014/AS 4072.1:2005
BK: 210
Ref: 23SFR00034
ID: E, F

Scenario: Penetration seal to PVC flexi cable conduit

Services: Up to Ø50mm PVC flexi conduit with mixed cable bundle :
TPS, Data

Annular: 0 - 5mm

Construction: 51mm KOROK® wall

Fire Integrity: 60 minutes

Fire Insulation: 60 minutes

Web based drawings are for example only. Fire performance of any system is dependant on, but not limited to size of opening, substrate, if penetrations are passing through, type, size and number. Please refer to Ryanfire technical department for detailed and specific fire performance information.



RYANFIRE Technical Support:
info@ryanfire.co.nz - Tel 09 443 0362

Drawing Title
SL Collar to PVC flexi conduit
51mm KOROK® wall

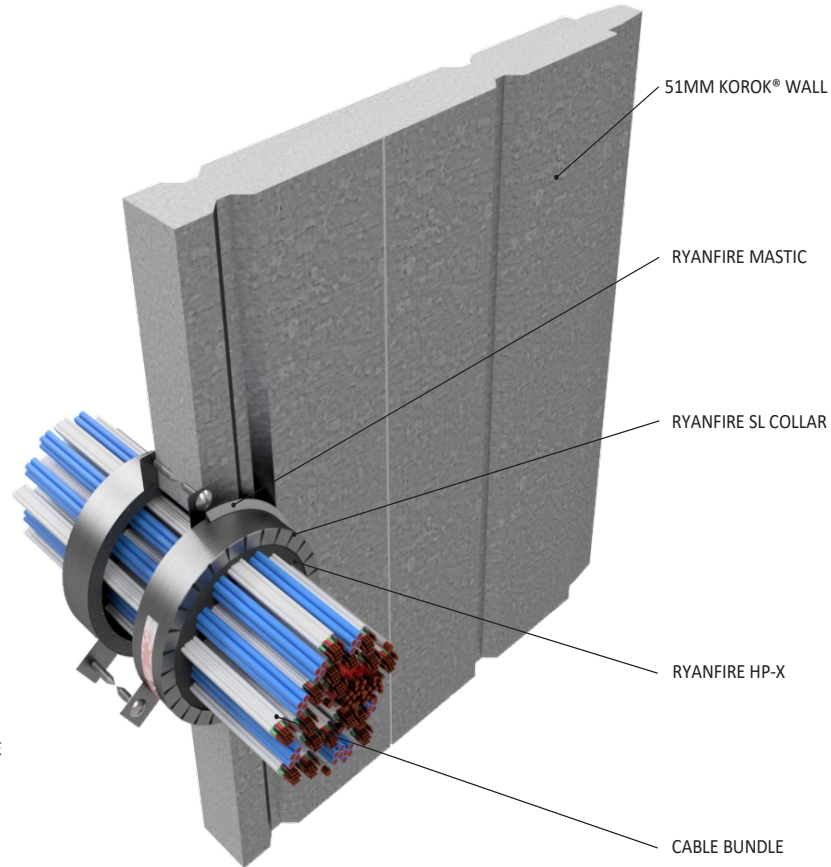
Scale	Date	
NTS	April 2025	
Drawing Number	Rev	
V33.15	3.0	

All errors and omissions excepted. The information contained within this drawing is believed to be correct on the date of publication, and is based upon tested and certified solutions. The policy of Ryanfire Products is one of constant improvement. Installers must ensure that they are following the latest published drawings, test evidence and instructions. Whilst Ryanfire Products will endeavour to keep its publications up to date, the accuracy of the information contained within this drawing may be affected by pertinent changes in the law or regulatory requirements and alterations or amendments to the specification of the manufactured products. Terms and conditions of sale apply.

Ryanfire Products owns and has copyright to these drawings. They are to be used only for the purpose for which they were intended and supplied and are not to be sold, transferred or made available for use by a third party. Any misuse of these drawings will result in legal proceedings.

INSTALLATION INSTRUCTIONS

1. ENSURE THE APERTURE IS CLEAN AND FREE OF DUST AND DEBRIS.
2. SELECT THE CORRECT SIZE RYANFIRE SL COLLAR TO FIT AROUND THE CABLE BUNDLE.
3. SECURE THE SL COLLAR AROUND THE PIPE AND SLIDE IT UP UNTIL IT IS FLUSH WITH THE SURFACE OF THE WALL. FIX THE COLLAR INTO PLACE USING 12G X 30MM TEK SCREWS.
4. APPLY RYANFIRE HP-X INTO THE ANNULAR GAP BETWEEN THE BUNDLE AND THE SL COLLAR, TO THE FULL DEPTH OF THE COLLAR.
5. APPLY A NOMINAL 5MM BEAD OF RYANFIRE MASTIC AROUND THE JOINT BETWEEN THE SL COLLAR AND THE KOROK® WALL.
6. REPEAT THIS PROCESS ON THE OPPOSITE SIDE OF THE WALL.



Products:	RYANFIRE SL COLLAR RYANFIRE HP-X RYANFIRE MASTIC
Approvals:	AS 1530.4:2014/AS 4072.1:2005
BK:	165
Ref:	22SFR00058
ID:	C
Scenario:	Penetration seal to cable bundles
Services:	Up to Ø100mm mixed cable bundle: TPS, data
Construction:	51mm KOROK® wall
Fire Integrity:	60 minutes
Fire Insulation:	60 minutes

Web based drawings are for example only. Fire performance of any system is dependant on, but not limited to size of opening, substrate, if penetrations are passing through, type, size and number. Please refer to Ryanfire technical department for detailed and specific fire performance information.



RYANFIRE Technical Support:
info@ryanfire.co.nz - Tel 09 443 0362

Drawing Title
**SL Collar & HP-X to cable bundle
51mm KOROK® wall**

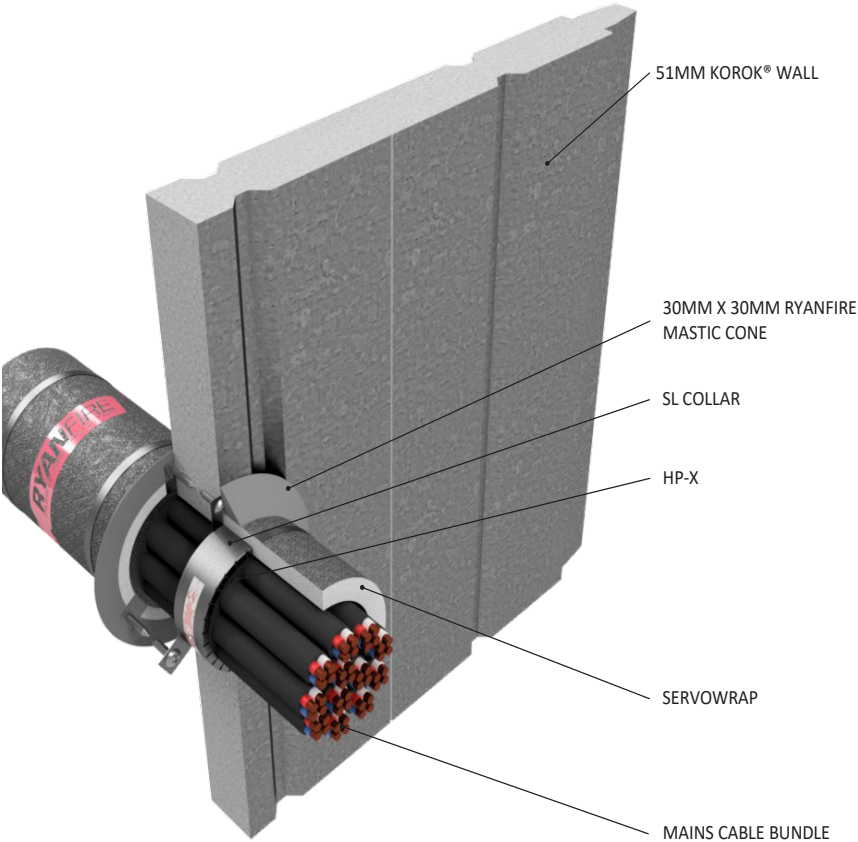
Scale	NTS	Date	April 2025
Drawing Number	V36.10	Rev	3.0

All errors and omissions excepted. The information contained within this drawing is believed to be correct on the date of publication, and is based upon tested and certified solutions. The policy of Ryanfire Products is one of constant improvement. Installers must ensure that they are following the latest published drawings, test evidence and instructions. Whilst Ryanfire Products will endeavour to keep its publications up to date, the accuracy of the information contained within this drawing may be affected by pertinent changes in the law or regulatory requirements and alterations or amendments to the specification of the manufactured products. Terms and conditions of sale apply.

Ryanfire Products owns and has copyright to these drawings. They are to be used only for the purpose for which they were intended and supplied and are not to be sold, transferred or made available for use by a third party. Any misuse of these drawings will result in legal proceedings.

INSTALLATION INSTRUCTIONS

1. ENSURE THE APERTURE IS CLEAN AND FREE OF DUST AND DEBRIS.
2. THE CABLES SHOULD BE TIGHTLY BUNDLED TOGETHER.
3. SELECT THE CORRECT SIZE RYANFIRE SL COLLAR TO FIT AROUND THE CABLE BUNDLE.
4. SECURE THE SL COLLAR AROUND THE BUNDLE AND SLIDE IT ONTO THE FACE OF THE WALL. FIX THE COLLAR INTO THE WALL WITH 12G X 30MM TEK SCREWS.
5. APPLY HP-X INTO THE ANNULAR GAP BETWEEN THE BUNDLE AND THE SL COLLAR, TO THE FULL DEPTH OF THE SL COLLAR.
6. WRAP THE CABLE BUNDLE AND SL COLLAR WITH ONE LAYER OF 300MM WIDE SERVOWRAP.
7. PLACE THE SERVOWRAP HARD UP AGAINST THE WALL AND SECURE INTO PLACE WITH STEEL CABLE TIES, 50MM FROM EACH END, AND ONE NOMINALLY IN THE CENTER. SEAL ANY EXPOSED EDGES OF THE SERVOWRAP WITH FOIL TAPE.
8. APPLY A 30MM X 30MM CONE OF RYANFIRE MASTIC AROUND THE JUNCTION BETWEEN THE WRAPPED CABLE BUNDLE AND THE KOROK® WALL.
9. CLEAN ANY EXCESS MASTIC WITH A DAMP CLOTH.
10. REPEAT THIS PROCESS ON THE OPPOSITE SIDE OF THE WALL.



Products: RYANFIRE SL COLLAR
RYANFIRE HP-X
RYANFIRE SERVOWRAP
RYANFIRE MASTIC
Approvals: AS 1530.4:2014/AS 4072.1:2005
BK: 210
Ref: 23SFR00034
ID: D

Scenario: Penetration seal to mains cable bundle

Services: Up to 12 x 25mm² mains cables

Annular: 10 - 19mm

Construction: 51mm KOROK® wall

Fire Integrity: 60 minutes

Fire Insulation: 0 minutes

Web based drawings are for example only. Fire performance of any system is dependant on, but not limited to size of opening, substrate, if penetrations are passing through, type, size and number. Please refer to Ryanfire technical department for detailed and specific fire performance information.



RYANFIRE Technical Support:
info@ryanfire.co.nz - Tel 09 443 0362

Drawing Title
**SL Collar, HP-X & Servowrap to mains bundle
51mm KOROK® wall**

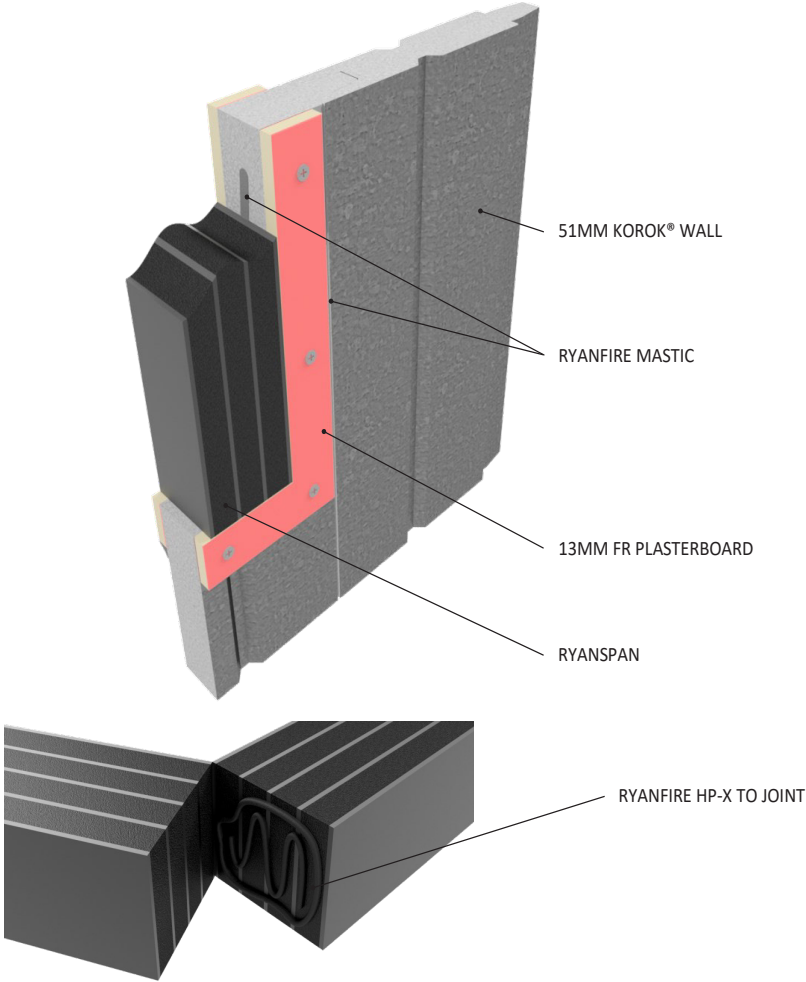
Scale	Date	
NTS	April 2025	
Drawing Number	Rev	
V36.15	3.0	

All errors and omissions excepted. The information contained within this drawing is believed to be correct on the date of publication, and is based upon tested and certified solutions. The policy of Ryanfire Products is one of constant improvement. Installers must ensure that they are following the latest published drawings, test evidence and instructions. Whilst Ryanfire Products will endeavour to keep its publications up to date, the accuracy of the information contained within this drawing may be affected by pertinent changes in the law or regulatory requirements and alterations or amendments to the specification of the manufactured products. Terms and conditions of sale apply.

Ryanfire Products owns and has copyright to these drawings. They are to be used only for the purpose for which they were intended and supplied and are not to be sold, transferred or made available for use by a third party. Any misuse of these drawings will result in legal proceedings.

INSTALLATION INSTRUCTIONS

1. ENSURE THE APERTURE IS CLEAN AND FREE OF DUST AND DEBRIS.
2. APPLY A 50MM WIDE "FRAME" OF 13MM FR PLASTERBOARD AROUND THE PERIMETER OF THE APERTURE, ON EACH SIDE OF THE WALL. FIX THE PLASTERBOARD TO THE WALL USING 6G X 32MM PLASTERBOARD SCREWS.
3. APPLY A BEAD OF RYANFIRE MASTIC TO THE JOINT OF THE PLASTERBOARD AND THE KOROK® WALL.
4. APPLY A BEAD OF RYANFIRE MASTIC ALONG THE CENTRE OF EACH INTERNAL EDGE OF THE APERTURE.
5. SELECT THE CORRECT WIDTH OF RYANSPAN REQUIRED FOR THE GAP.
6. COMPRESS THE RYANSPAN AND FIT CENTRALLY WITHIN THE GAP.
7. TO JOIN TWO PIECES OF RYANSPAN, APPLY RYANFIRE HP-X TO EACH END AND BUTT THEM UP AGAINST EACH OTHER. ENSURE A TIGHT FITTING SEAL.



Products: RYANSPAN
RYANFIRE MASTIC
RYANFIRE HP-X
Approvals: AS 1530.4/AS 4072.1
BK: 261
Ref: 23SFR00095
ID: A - C
Scenario: Vertical linear gap seal
Construction: 51mm KOROK® wall
Void Size: Up to 100mm wide

Fire Integrity:

Gap	Vertical
50mm	-/60/45
75mm	-/60/60
100mm	-/60/45

Web based drawings are for example only. Fire performance of any system is dependant on, but not limited to size of opening, substrate, if penetrations are passing through, type, size and number. Please refer to Ryanfire technical department for detailed and specific fire performance information.



RYANFIRE Technical Support:
info@ryanfire.co.nz - Tel 09 443 0362

Drawing Title
Ryanspan linear gap seal
51mm KOROK® wall

Scale **NTS** Date **April 2025**

Drawing Number **V67.13** Rev **3.0**

All errors and omissions excepted. The information contained within this drawing is believed to be correct on the date of publication, and is based upon tested and certified solutions. The policy of Ryanfire Products is one of constant improvement. Installers must ensure that they are following the latest published drawings, test evidence and instructions. Whilst Ryanfire Products will endeavour to keep its publications up to date, the accuracy of the information contained within this drawing may be affected by pertinent changes in the law or regulatory requirements and alterations or amendments to the specification of the manufactured products. Terms and conditions of sale apply.

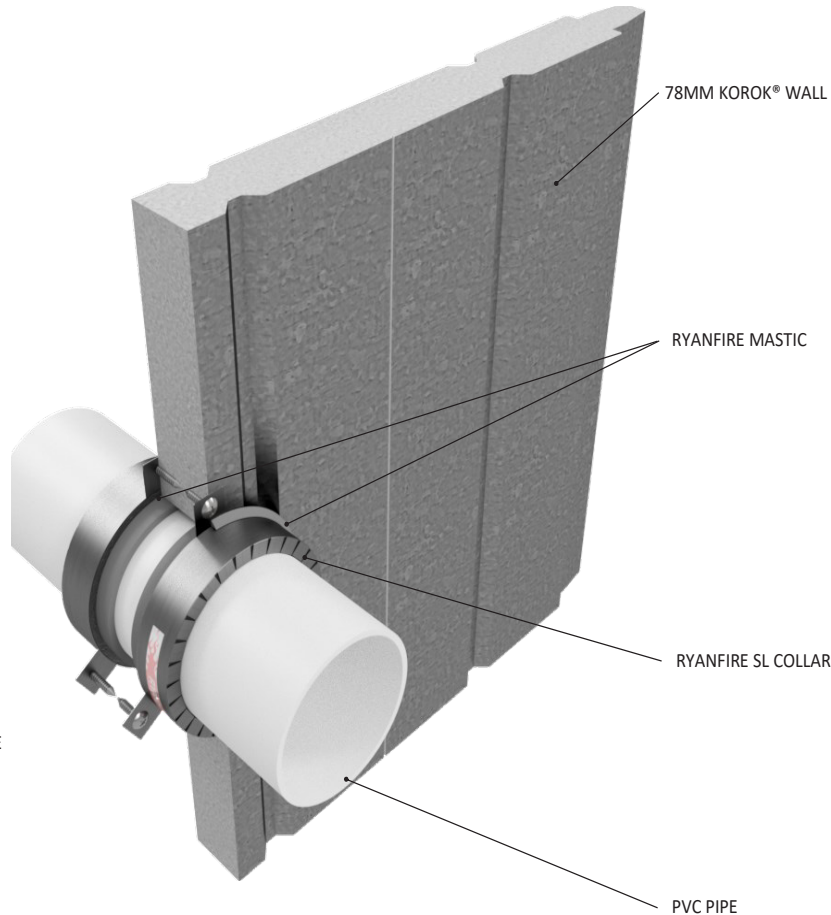
Ryanfire Products owns and has copyright to these drawings. They are to be used only for the purpose for which they were intended and supplied and are not to be sold, transferred or made available for use by a third party. Any misuse of these drawings will result in legal proceedings.

120 MINUTE APPLICATIONS

78MM KOROK® WALL

INSTALLATION INSTRUCTIONS

1. ENSURE THE APERTURE IS CLEAN AND FREE OF DUST AND DEBRIS.
2. SELECT THE CORRECT SIZE RYANFIRE SL COLLAR TO FIT AROUND THE PVC PIPE.
3. APPLY RYANFIRE MASTIC INTO THE ANNULAR GAP BETWEEN THE PVC PIPE AND THE KOROK® WALL.
4. SECURE THE SL COLLAR AROUND THE PIPE AND SLIDE IT UP UNTIL IT IS FLUSH WITH THE SURFACE OF THE WALL. FIX THE COLLAR INTO PLACE USING 12G X 30MM TEK SCREWS.
5. APPLY A NOMINAL 5MM BEAD OF RYANFIRE MASTIC AROUND THE JOINT BETWEEN THE SL COLLAR AND THE KOROK® WALL.
6. REPEAT THIS PROCESS ON THE OPPOSITE SIDE OF THE WALL.



Products: RYANFIRE SL COLLAR
RYANFIRE MASTIC
Approvals: AS 1530.4:2014/AS 4072.1:2005
BK: 184
Ref: 22SFR00073
ID: A - E

Scenario: Penetration seal to PVC pipe

Services: Up to Ø150mm PVC pipes

Construction: 78mm KOROK® wall

Fire Resistance: Ø50mm : -/120/120
Ø65mm : -/120/120
Ø80mm : -/120/60
Ø100mm : -/120/120
Ø150mm : -/120/120

Web based drawings are for example only. Fire performance of any system is dependant on, but not limited to size of opening, substrate, if penetrations are passing through, type, size and number. Please refer to Ryanfire technical department for detailed and specific fire performance information.



RYANFIRE Technical Support:
info@ryanfire.co.nz - Tel 09 443 0362

Drawing Title
SL Collar to PVC pipes
78mm KOROK® wall

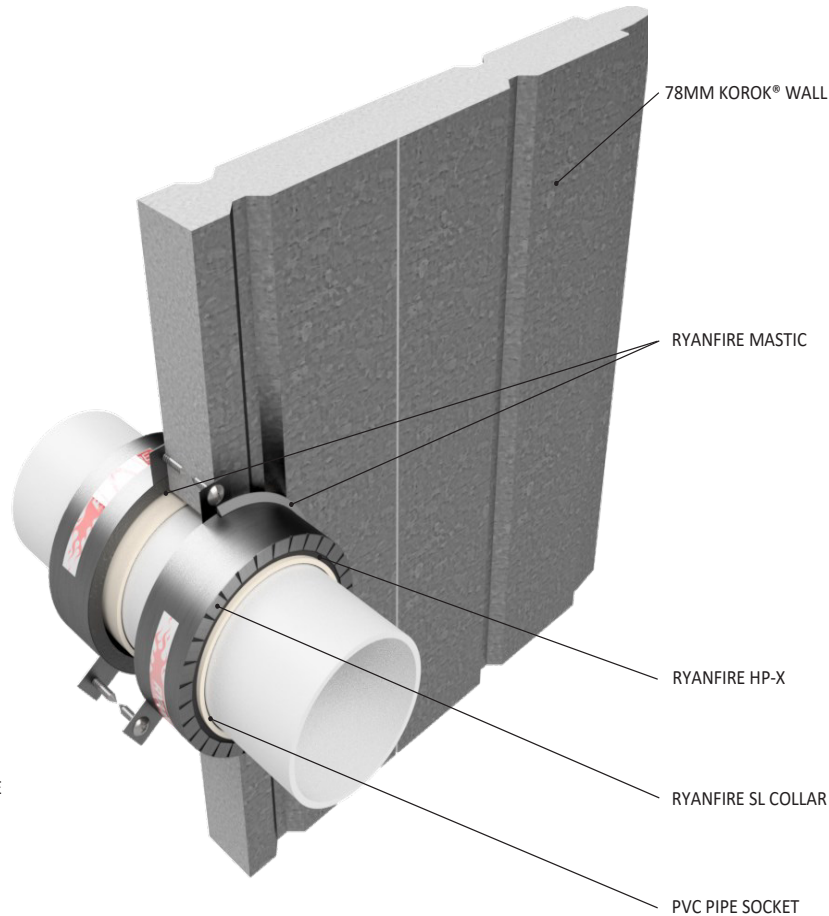
Scale	Date	
NTS	April 2025	
Drawing Number	Rev	
V21.30	3.0	

All errors and omissions excepted. The information contained within this drawing is believed to be correct on the date of publication, and is based upon tested and certified solutions. The policy of Ryanfire Products is one of constant improvement. Installers must ensure that they are following the latest published drawings, test evidence and instructions. Whilst Ryanfire Products will endeavour to keep its publications up to date, the accuracy of the information contained within this drawing may be affected by pertinent changes in the law or regulatory requirements and alterations or amendments to the specification of the manufactured products. Terms and conditions of sale apply.

Ryanfire Products owns and has copyright to these drawings. They are to be used only for the purpose for which they were intended and supplied and are not to be sold, transferred or made available for use by a third party. Any misuse of these drawings will result in legal proceedings.

INSTALLATION INSTRUCTIONS

1. ENSURE THE APERTURE IS CLEAN AND FREE OF DUST AND DEBRIS.
2. SELECT THE CORRECT SIZE RYANFIRE SL COLLAR TO FIT AROUND THE PVC PIPE.
3. APPLY RYANFIRE MASTIC INTO THE ANNULAR GAP BETWEEN THE PVC PIPE AND THE KOROK® WALL.
4. SECURE THE SL COLLAR AROUND THE PIPE AND SLIDE IT UP UNTIL IT IS FLUSH WITH THE SURFACE OF THE WALL. FIX THE COLLAR INTO PLACE USING 12G X 30MM TEK SCREWS.
5. APPLY RYANFIRE HP-X INTO THE ANNULAR GAP BETWEEN THE SOCKET AND THE SL COLLAR, TO THE FULL DEPTH OF THE COLLAR.
6. APPLY A NOMINAL 5MM BEAD OF RYANFIRE MASTIC AROUND THE JOINT BETWEEN THE SL COLLAR AND THE KOROK® WALL.
7. REPEAT THIS PROCESS ON THE OPPOSITE SIDE OF THE WALL.



Products:	RYANFIRE SL COLLAR RYANFIRE HP-X RYANFIRE MASTIC
Approvals:	AS 1530.4:2014/AS 4072.1:2005
BK:	184
Ref:	225FR00073
ID:	F, G
Scenario:	Penetration seal to PVC pipes + socket joint
Services:	Up to Ø100mm PVC pipes + socket joint
Construction:	78mm KOROK® wall
Fire Resistance:	Ø20mm : -/120/120 Ø100mm : -/120/120

Web based drawings are for example only. Fire performance of any system is dependant on, but not limited to size of opening, substrate, if penetrations are passing through, type, size and number. Please refer to Ryanfire technical department for detailed and specific fire performance information.



RYANFIRE Technical Support:
info@ryanfire.co.nz - Tel 09 443 0362

Drawing Title
SL Collar to PVC socket
78mm KOROK® wall

Scale	NTS	Date	April 2025
Drawing Number	V21.31	Rev	3.0

All errors and omissions excepted. The information contained within this drawing is believed to be correct on the date of publication, and is based upon tested and certified solutions. The policy of Ryanfire Products is one of constant improvement. Installers must ensure that they are following the latest published drawings, test evidence and instructions. Whilst Ryanfire Products will endeavour to keep its publications up to date, the accuracy of the information contained within this drawing may be affected by pertinent changes in the law or regulatory requirements and alterations or amendments to the specification of the manufactured products. Terms and conditions of sale apply.

Ryanfire Products owns and has copyright to these drawings. They are to be used only for the purpose for which they were intended and supplied and are not to be sold, transferred or made available for use by a third party. Any misuse of these drawings will result in legal proceedings.

2 WAY TESTED FIRE RATED ACCESS PANEL

FYRESHIELD™ RANGE



Applications	System	Details	FRL
KOROK® Walls: Hinged FyreSHIELD PLUS	FyreSHIELDRange Sizes: <ul style="list-style-type: none"> 300 x 300mm 400 x 400mm 450 x 450mm 550 x 550mm 600 x 600mm Custom any size up to 600 x 600mm 	Providing market leading FRL's for access panels, the FyreSHIELD™ uses new materials technology so it doesn't need any additional blocks or architraves to achieve 30 minutes insulation. For specific system and FRL details refer to the: FyreSHIELD™ for KOROK® Data Sheet	<ul style="list-style-type: none"> - / 120 / 30 (direct exposure to fire side) - / 60 / 60 (reverse installation, protected face)
KOROK® Ceilings: FyreSHIELD Screw-Fixed		Available from the Trafalgar Fire Knowledge Centre Technical Manuals page on the website.	<ul style="list-style-type: none"> -/60/30



FyreSHIELD™ Plus access panels were independently tested by BRANZ to AS 1530.4:2014, installed in a 78 mm KOROK® wall system. This test was conducted with two panels in a single wall – one installed to face the furnace's fire source directly, and one installed on the opposite side, facing away from the furnace.

This configuration replicates real-world uncertainty about which side of the wall a fire may approach from – a critical requirement for any access panel intended to comply with NZBC for walls and shafts, where two-way protection is expected.

FIRE RESISTANCE RATINGS(FRR) ACHIEVED

- - / 120 / 30 (direct exposure to fire side)
- - / 60 / 60 (reverse installation, protected face)
- - /60 / 30 (Ceilings)

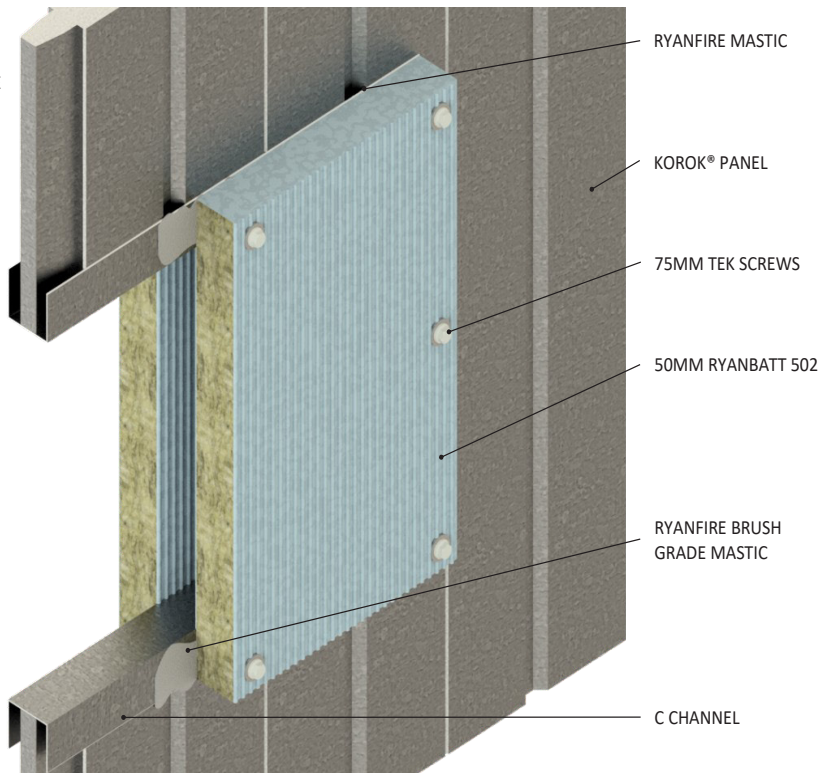
For full details, refer to [Report FR18229-02-1](#).

RYANBATT 502 BOARD SEALS



INSTALLATION INSTRUCTIONS

1. ENSURE THE APERTURE IS CLEAN AND FREE OF DUST AND DEBRIS. THE APERTURE SHOULD BE FORMED AS PER THE KOROK® SPECIFICATIONS.
2. THE APERTURE SHOULD BE FORMED IN ACCORDANCE WITH THE WALL MANUFACTURER'S INSTALLATION INSTRUCTIONS.
3. CUT THE RYANBATT 502 TO FIT OVER THE APERTURE. THE BOARD MUST HAVE A MINIMUM OVERLAP ON ALL SIDES OF 50MM FOR 51MM KOROK® AND 100MM FOR 78MM KOROK®.
4. APPLY A STRIP OF RYANFIRE BRUSH GRADE MASTIC TO THE PERIMETER OF THE APERTURE OF 50MM WIDE FOR 51MM KOROK® AND 100MM WIDE FOR 78MM KOROK®.
5. APPLY A STRIP OF RYANFIRE BRUSH GRADE MASTIC TO THE PERIMETER OF THE BOARD WHERE IT WILL MAKE CONTACT WITH THE WALL.
6. APPLY RYANFIRE BURHS GRADE MASTIC TO ALL EXPOSED AND CUT EDGES OF RYANBATTS
7. PLACE THE RYANBATT 502 OVER THE APERTURE AND FIX INTO POSITION WITH MINIMUM 75MM TEK SCREWS & PENNY WASHERS AT MAX 200MM CENTRES AND NO MORE THAN 25MM FROM THE EDGES FOR 51MM KOROK® AND NO MORE THAN 50MM FROM THE EDGES FOR 78MM KOROK®.
8. JOINTS SHOULD BE STAGGERED AT LEAST 200MM BETWEEN EACH SIDE OF THE WALL.
9. APPLY A MINIMUM 5MM NOMINAL BEAD OF RYANFIRE MASTIC TO THE PERIMETER OF THE SEAL, ANY BOARD TO BOARD JOINTS AND TO ANY OTHER GAPS, INCLUDING ANY RECESSES IN THE KOROK® PANEL.
10. REPEAT THE PROCESS FOR THE OTHER SIDE OF THE WALL.



Products: RYANBATT 502
RYANFIRE MASTIC
RYANFIRE BRUSH GRADE MASTIC

Approvals: AS 1530.4:2014/AS 4072.1:2005

BK: 92 / 93 / 139 / 27

Ref: PF20063 / PF20064 / 22SFR00019
FAS200363

ID: A / 1 / A / Table 6

Scenario: Pattress fit blank aperture seal to KOROK® panel wall

Construction	51mm KOROK®	78mm KOROK®
Aperture	1000mm high x unlimited width	900mm high x unlimited width
FRR	-/60/60	-/120/120

The fire rating may change depending on service penetration performance.

Web based drawings are for example only. Fire performance of any system is dependant on, but not limited to size of opening, substrate, if penetrations are passing through, type, size and number. Please refer to Ryanfire technical department for detailed and specific fire performance information.



RYANFIRE Technical Support:
info@ryanfire.co.nz - Tel 09 443 0362

Drawing Title
**Ryanbatt 502 pattress fit blank seal
51mm & 78mm KOROK® panel wall**

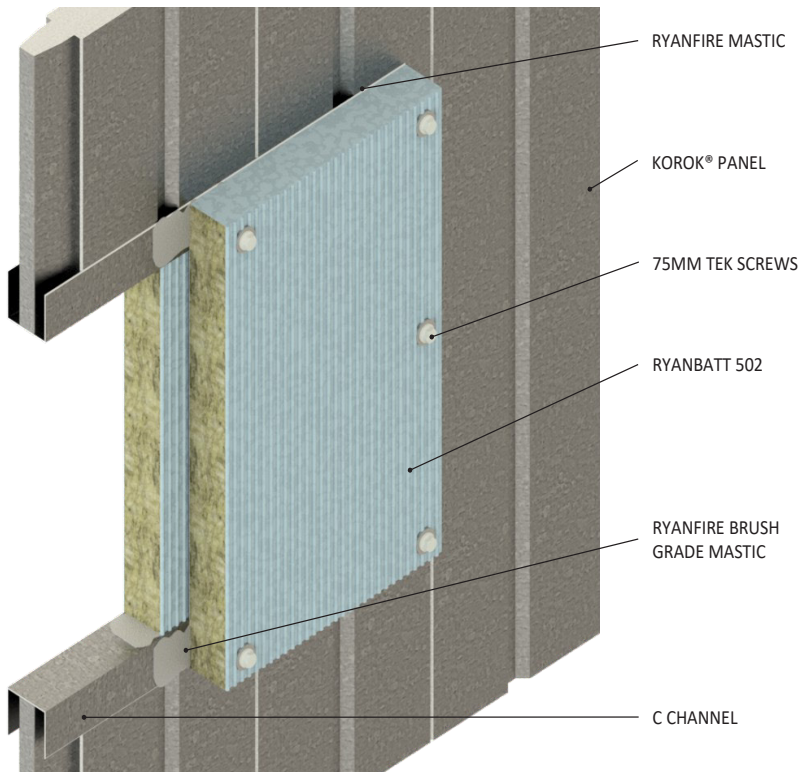
Scale	NTS	Date	April 2025
Drawing Number	V53.4	Rev	9.0

All errors and omissions excepted. The information contained within this drawing is believed to be correct on the date of publication, and is based upon tested and certified solutions. The policy of Ryanfire Products is one of constant improvement. Installers must ensure that they are following the latest published drawings, test evidence and instructions. Whilst Ryanfire Products will endeavour to keep its publications up to date, the accuracy of the information contained within this drawing may be affected by pertinent changes in the law or regulatory requirements and alterations or amendments to the specification of the manufactured products. Terms and conditions of sale apply.

Ryanfire Products owns and has copyright to these drawings. They are to be used only for the purpose for which they were intended and supplied and are not to be sold, transferred or made available for use by a third party. Any misuse of these drawings will result in legal proceedings.

INSTALLATION INSTRUCTIONS

1. ENSURE THE APERTURE IS CLEAN AND FREE OF DUST AND DEBRIS. THE APERTURE SHOULD BE FORMED AS PER THE KOROK® SPECIFICATIONS.
2. APPLY RYANFIRE BRUSH GRADE ONTO THE INTERNAL EDGES OF THE APERTURE.
3. CUT THE RYANBATT 502 TO FIT TIGHTLY WITHIN THE APERTURE.
4. APPLY RYANFIRE BRUSH GRADE MASTIC TO THE PERIMETER EDGES OF THE RYANBATT 502 AND FIX IT INTO THE APERTURE TO SIT FLUSH WITH THE SURFACE OF THE WALL
5. CUT A 2ND LAYER OF RYANBATT 502 TO FIT OVER THE APERTURE. THE BOARD MUST HAVE A MINIMUM OVERLAP ON ALL SIDES OF 50MM FOR 51MM KOROK® AND 100MM FOR 78MM KOROK®.
6. APPLY A STRIP OF RYANFIRE BRUSH GRADE MASTIC TO THE PERIMETER OF THE APERTURE OF 50MM FOR 51MM KOROK® AND 100MM FOR 78MM KOROK®.
7. APPLY A STRIP OF RYANFIRE BRUSH GRADE MASTIC TO THE PERIMETER OF THE BOARD WHERE IT WILL MAKE CONTACT WITH THE WALL.
8. PLACE THE RYANBATT 502 OVER THE APERTURE AND FIX INTO POSITION WITH MINIMUM 75MM TEK SCREWS & PENNY WASHERS AT MAX 200MM CENTRES AND NO MORE THAN 25MM FROM THE EDGES FOR 51MM KOROK® AND NO MORE THAN 50MM FROM THE EDGES FOR 78MM KOROK®.
9. JOINTS SHOULD BE STAGGERED AT LEAST 200MM BETWEEN EACH SIDE OF THE WALL.
10. APPLY BRUSH GRADE MASTIC TO ANY CUT AND EXPOSED EDGES OF THE 502 BOARD.
11. APPLY A MINIMUM 5MM NOMINAL BEAD OF RYANFIRE MASTIC TO THE PERIMETER OF THE SEAL, ANY BOARD TO BOARD JOINTS AND TO ANY OTHER GAPS, INCLUDING ANY RECESSES IN THE KOROK® PANEL.



Products: RYANBATT 502
RYANFIRE MASTIC
RYANFIRE BRUSH GRADE MASTIC
Approvals: AS 1530.4:2014/AS 4072.1:2005
BK: 92 / 93 / 140 / 27
Ref: PF20063 / PF20064 / 22SFR00020
FAS 200363
B / 2 / A / Table 6
ID:
Scenario: Pattress + friction fit blank aperture seal to KOROK® panel wall

Construction	51mm KOROK®	78mm KOROK®
Aperture	1000mm high x unlimited width	900mm high x unlimited width
FRR	-/60/60	-/120/120

The fire rating may change depending on service penetration performance.

Web based drawings are for example only. Fire performance of any system is dependant on, but not limited to size of opening, substrate, if penetrations are passing through, type, size and number. Please refer to Ryanfire technical department for detailed and specific fire performance information.



RYANFIRE Technical Support:
info@ryanfire.co.nz - Tel 09 443 0362

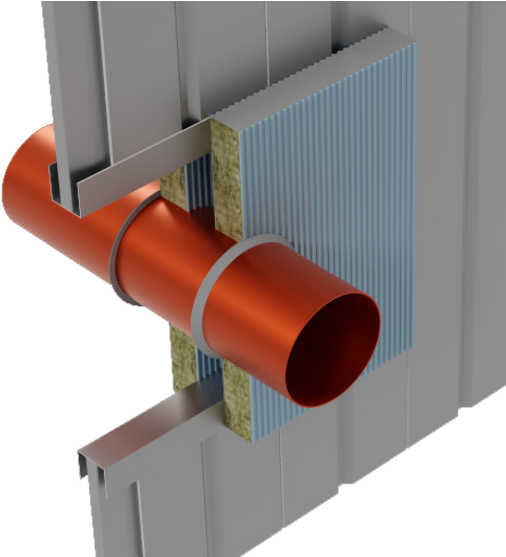
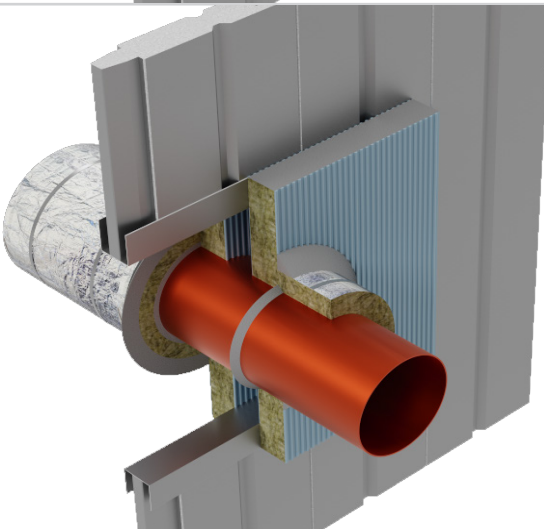
Drawing Title
**Ryanbatt 502 friction+pattress blank seal
51mm & 78mm KOROK® panel wall**

Scale NTS	Date April 2025
Drawing Number V53.24	Rev 6.0

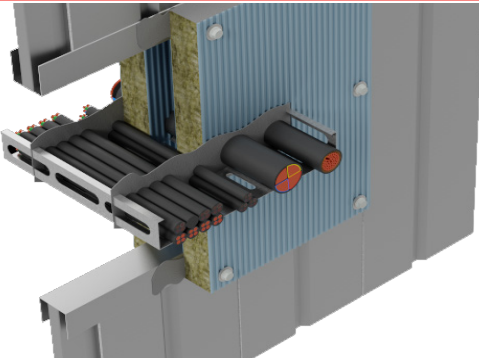
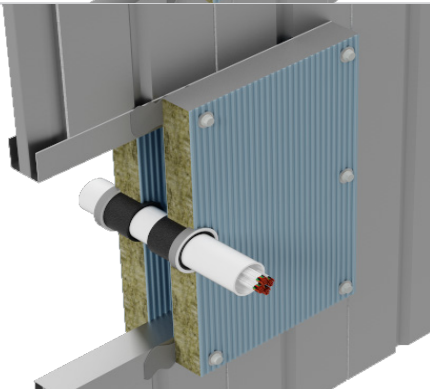
All errors and omissions excepted. The information contained within this drawing is believed to be correct on the date of publication, and is based upon tested and certified solutions. The policy of Ryanfire Products is one of constant improvement. Installers must ensure that they are following the latest published drawings, test evidence and instructions. Whilst Ryanfire Products will endeavour to keep its publications up to date, the accuracy of the information contained within this drawing may be affected by pertinent changes in the law or regulatory requirements and alterations or amendments to the specification of the manufactured products. Terms and conditions of sale apply.

Ryanfire Products owns and has copyright to these drawings. They are to be used only for the purpose for which they were intended and supplied and are not to be sold, transferred or made available for use by a third party. Any misuse of these drawings will result in legal proceedings.

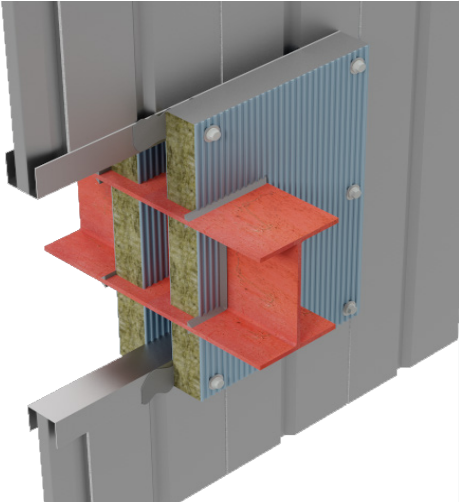
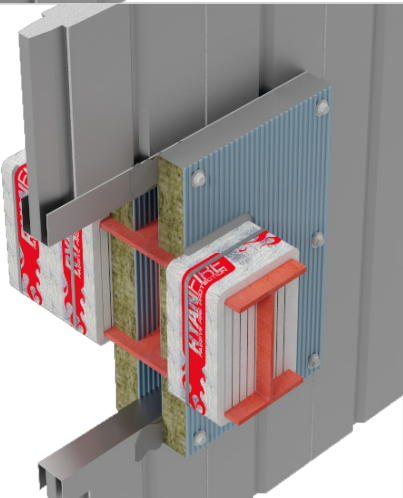
METAL PIPES

Applications	System	Details	FRL
	<u>V5.3</u> Metal Pipes Products : <ul style="list-style-type: none"> • Ryanbatt 502 • Ryanfire Mastic • Ryanfire Brush Grade Mastic Used in conjunction with V53.4 or V53.24	Up to Ø100mm brass pipes	-/60/-
		Up to Ø150mm copper / steel pipes	
	<u>V7.1</u> AS1530.4:2014 Appendix E Metal Pipes Products : <ul style="list-style-type: none"> • Ryanbatt 502 • Ryanfire Rokwrap • Ryanfire Mastic • Ryanfire Brush Grade Mastic Used in conjunction with V53.4 or V53.24	Up to Ø100mm brass pipes	-/120/90
		Up to Ø150mm copper pipes	-/120/120
		Ø300mm steel pipes	-/120/90

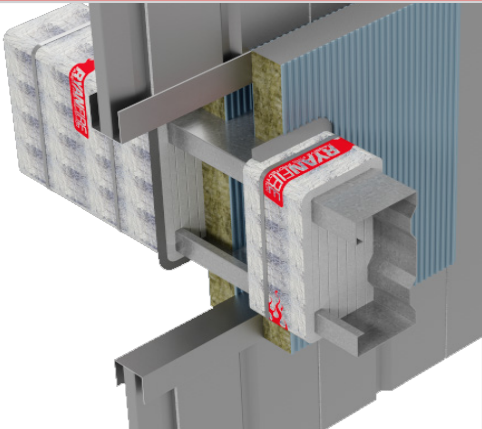
ELECTRICAL SERVICES

Applications	System	Details	FRL
	<u>V27.8</u> AS1530.4:2014 Appendix D cable configuration D1 & D2 Products : <ul style="list-style-type: none"> • Ryanbatt 502 • Ryanfire Mastic • Ryanfire Brush Grade Mastic Used in conjunction with V53.4 or V53.24	With or without cable tray	-/60/60
	<u>V53.23</u> AS1530.4:2014 Appendix D cable configuration D1 & D2 Products : <ul style="list-style-type: none"> • Ryanbatt 502 • Ryanfire Servowrap • Ryanfire Mastic • Ryanfire Brush Grade Mastic Used in conjunction with V53.4 or V53.24		-/120/120
	<u>V33.8</u> PVC Cable Conduits Products : <ul style="list-style-type: none"> • Ryanbatt 502 • Ryanfire Graphite Strap • Ryanfire Mastic • Ryanfire Brush Grade Mastic Used in conjunction with V53.4 or V53.24	Ø20mm Conduit	-/120/120
		Ø50mm Conduit	-/120/90

STRUCTURAL STEEL

Applications	System	Details	FRL
	<u>V64.8</u> Various structural steel elements Products : <ul style="list-style-type: none"> • Ryanbatt 502 • Ryanfire Mastic • Ryanfire Brush Grade Mastic Used in conjunction with V53.4 or V53.24	64mm Steel Angle	-/120/60
		150mm Steel Angle	-/120/30
		200mm Steel Beam (UB)	-/120/60
		410mm Steel Beam (UB)	-/120/60
		50mm SHS	-/120/45
		89mm SHS	-/120/15
		250mm SHS	-/120/-
	<u>V64.4</u> Structural Steel Products : <ul style="list-style-type: none"> • Ryanbatt 502 • Ryanfire Servowrap • Ryanfire Mastic • Ryanfire Brush Grade Mastic Used in conjunction with V53.4 or V53.24	200mm Steel Beam(UB)	-/120/120

STRUCTURAL STEEL

Applications	System	Details	FRL
	<p><u>V64.5</u> Structural Steel</p> <p>Products :</p> <ul style="list-style-type: none"> • Ryanbatt 502 • Ryanfire Servowrap • Ryanfire Mastic • Ryanfire Brush Grade Mastic <p>Used in conjunction with V53.4 or V53.24</p>	<p>300mm Steel Purlin</p>	<p>-/120/120</p>