

# Senti

## All-in-One Smart Off-Grid Lighting Solution for Park & Pathway Applications

Delivers mission-critical reliable solar lighting in a streamlined design outputting up to 4200 Lumens. Parks, pathways and other small applications that require cost-efficient lighting can now have unparalleled:

- **Energy Forecasting & Management**
- **Remote Troubleshooting & Remediation**

UP TO  
**4200**  
LUMENS



### Maximum Uptime

Enhance uptime with our comprehensive solution, integrating predictive analytics, precise weather forecasts, and adaptable light profiles. Through proactive analysis, we anticipate and address potential issues, while tailored weather insights empower strategic planning.



### Longest Battery Life

Our dynamic charging algorithm uniquely focusses on battery charging to ensure optimal battery management for longer system life and maximum reliability.



### Hands Free Management

Discover effortless management with our service team. We monitor and manage your systems using advanced predictive analytics like potential energy and weather forecasts, freeing you from the hassle.



### Easy Installation & Maintenance

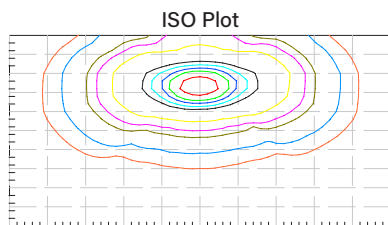
More than 80% of all issues are managed and eliminated through Clear Blue's remote management service. Installers and customers get peace of mind through our commissioning & provisioning services to ensure you get it right the first time, every time.

# Senti

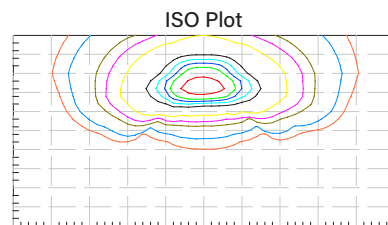
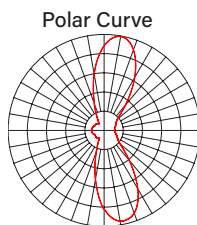
## Lighting Specifications

Light Specifications	
Performance	As an all-in-one 9.6W solar unit with an output of 4200 lumens, Senti is designed for applications that can be shut off after peak hours or operated using dimming and motion sensing profiles. Choose from user-selectable intensity settings—High, Mid, or Low—for tailored illumination, or enable motion-activated profiles that deliver a power boost only when needed. An Ultra Low Intensity mode is also available for minimal energy consumption. See the user-selectable light intensity profiles table for details.
Colour Temperature (K)	LED Colour temperature (CCT) Options – 2200K, 3000K, 4200K*, 5000K or Amber colour for coastal regions to preserve wildlife
CRI	70% minimum, higher CRI available upon request.
Fixture Colors	Black* (RAL 9011), grey (RAL 7004), dark bronze (RAL 8041)
EPA	Side EPA it is 0.108m <sup>2</sup> and front EPA 0.127m <sup>2</sup>

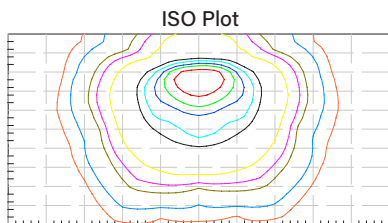
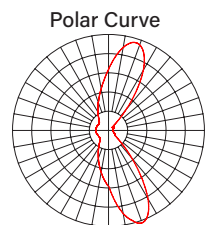
## Photometrics



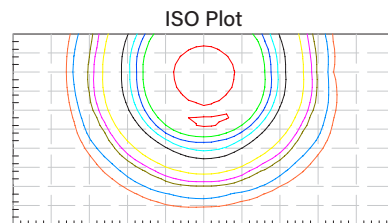
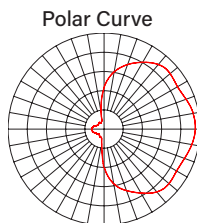
**T2M - Type II Medium**  
at 10m / 33ft



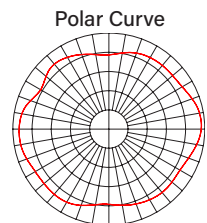
**T3M - Type III Medium**  
at 10m / 33ft



**T4M - Type IV Medium**  
at 10m / 33ft



**T5W - Type V Wide**  
at 10m / 33ft



## How to Order

CBT-SE-  -  -  -  -  -  -  -  -

Distribution	CRI & CCT	Batteries	Solar	Comms	Mounting Type	Colour	Grid Support	Pole
T2 : Type 2 Urban*	722 : 70CRI, 2200K	1B : 30Ah LiFePO4*	30 : 30W*	C : Cellular*	SF : Slip Fit*	BK : Black*	NG : No Grid*	NPP : None*
T3 : Type 3 Urban	730 : 70CRI, 3000K	2B : 60Ah LiFePO4*		W : WiFi*	WM : Wall Mount / Surface Mount	BZ : Bronze	GC : Grid Connect*	P10 : 10ft/3.1m
T4 : Type 4 Urban	740 : 70CRI, 4000K*					GR : Grey		P12 : 12ft/3.7m
T5 : Type 5 Urban Wide	750 : 70CRI, 5000K							P14 : 14ft/4.3m
	840 : 80CRI, 4000K							P16 : 16ft/4.9m
	850 : 80CRI, 5000K							P18 : 18ft/5.5m

\*Regularly stocked

### Example

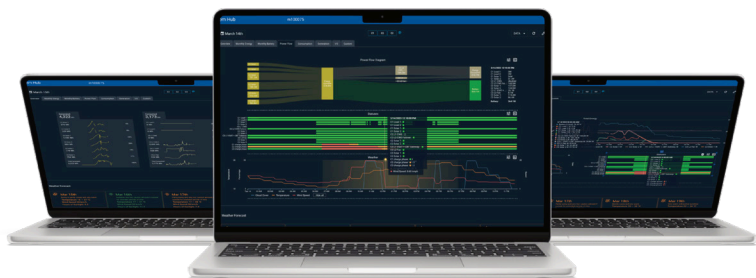
CBT-SE-T2-740-2B-30-C-SF-BK-NG-NPP

# Senti

## Light Profiles and Smart Features

User Selectable Light Intensity Profiles			
High Intensity with Motion	On at 50% from sunset to sunrise - motion set to 100%	Low Intensity with Motion	On at 20% from sunset to sunrise - motion set to 50%
Evening High Intensity with Motion	On at 50% from sunset to 11PM - motion set to 100%	Evening Low Intensity with Motion	On at 20% from sunset to 11PM - motion set to 50%
High Intensity	On at 100% from sunset to sunrise	Mid Intensity	On at 75% from sunset to sunrise
Low Intensity	On at 50% from sunset to sunrise	Ultra Low Intensity	On at 20% from sunrise to sunset

custom profiles available upon request



Illumience System Hub - Remote Monitoring and Management



System Wifi App - Local Monitoring and Management



### Energy as a Service

EaaS ensures lifetime replacement of aged electrical components, monitoring and replacing batteries, solar panels, and controllers as needed. Customers enjoy peace of mind with fixed operating expenses, avoiding unexpected costs, downtime, and warranty hassles, while a professional team ensures peak system performance.



### Illumience

Illumience Smart Off-Grid offers 24x7 remote monitoring, proactive servicing, and efficient management for lights, enhancing reliability and performance. Clear Blue's predictive analytics, weather forecasting, and individual load control ensure maximum uptime with reduced installation and maintenance costs.



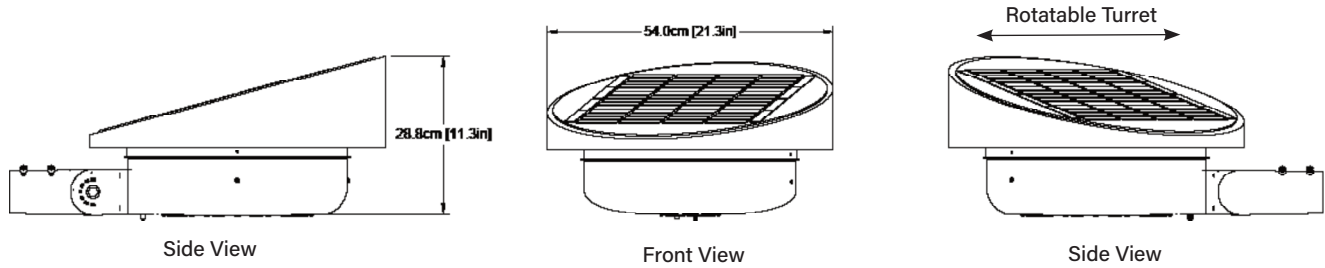
### Service Support

Clear Blue's service team, comprised of dedicated power professionals, supports systems from installation to day-to-day operation, ensuring maximum uptime. Trained to diagnose various field issues, such as shading on solar panels, battery degradation, short circuits, and weather-related performance concerns, their services are included in the Illumience subscription.

# Senti

## Mechanical and Power Specifications

### Mechanical



Mounting options	Wall mount/surface mount or slip-on mount (1.625" - 2.375" OD tenon mount)
Light Fixture Weight	33lbs (15kgs) max

### Pole Options

Pole Height	10ft, 12ft, 14ft and 18ft pole are optional. Customer can supply their own pole if preferred.
Pole Type	Aluminum pole
Pole Colour	Black, Grey, Brown. Colours can be customized (see sales representative for details)

### Power Components

Solar Panel	30W. Rotatable turret allows for solar panel to be oriented in the best direction to optimize solar generation in any location in the world.
Batteries	1 or 2x30Ah LiFePO4 batteries. The Senti fixture can withstand temperatures of -40C, but to protect the battery health, will turn off the light when the internal battery reaches -20C.
Optional Grid Connect	Solar-grid hybrid solutions are available for both grid retrofit and grid backup solutions.

### Visuals

